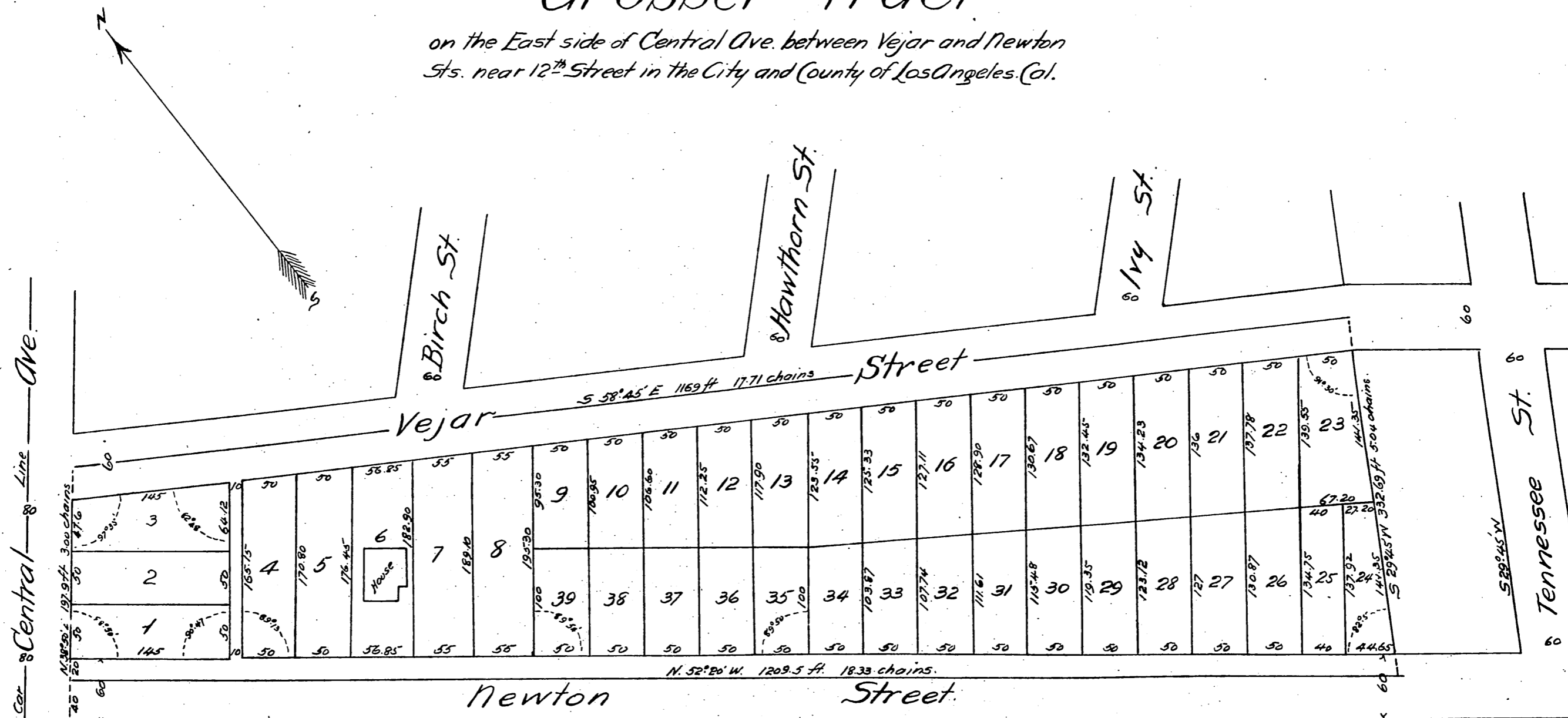


Map of Grosser Tract

on the East side of Central Ave. between Vejar and Newton
Sts. near 12th Street in the City and County of Los Angeles. Cal.



Surveyed Dec. 10th 1887 by John Goldsworthy Co. Surveyor.
True Courses Va. 14° 45' E Scale 50 ft = 1 inch

A full, true and correct copy of the original
(reduced to the scale of 100 feet to one inch)
recorded June 1, 1888 at 28 min. past 1 P.M.
at request of W^m F Grosser
Frank A. Gibson County Recorder.
by George Ruyber. Deputy.