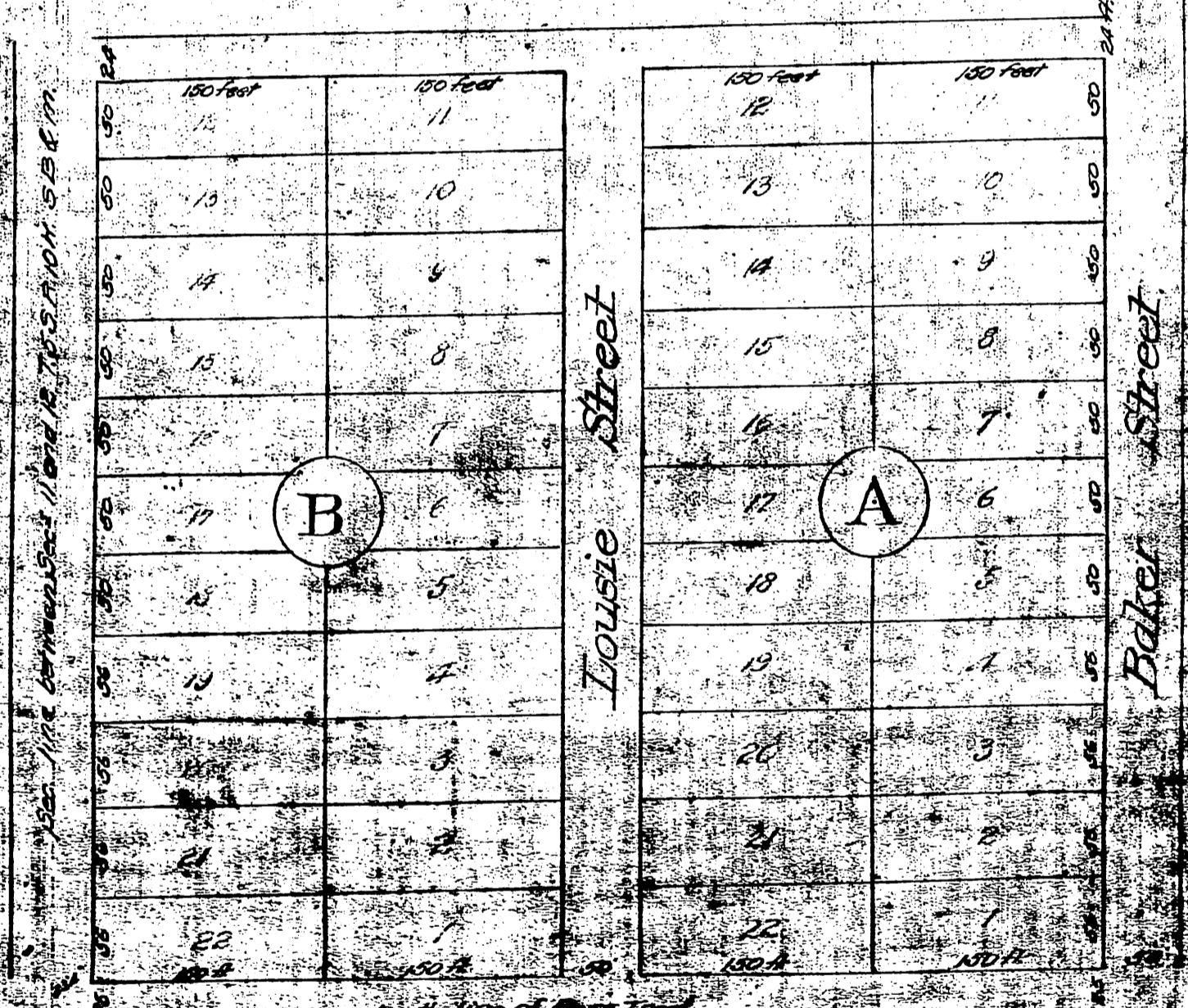


Hedges Addition To Santa Ana Los Angeles County Cal. In Orange County

Description as follows
Commencing at the crossing of the section line between sections 11 and 12 Town 5 South Range 10 West San Bernardino Band M. and the South line of the Ross Tract as set apart in the division of the Rancho De Santiago De Santa Ana made by District Court of said County Sept. 12, 1868. Thence North on section line 9.44 chains; thence East parallel with said south line of Ross Tract 10.59 chains; thence South parallel with section line 9.44 chains; thence West to point of beginning.
The SW corner of lot 22 Block "B" is 23.33 ft. East and 25 ft. North of the point of beginning.
Surveyed by J. Pleslie May 29, 1888



Scale of Plat 100 feet to an inch

Recorded in the Public Office of the County Clerk of Orange County