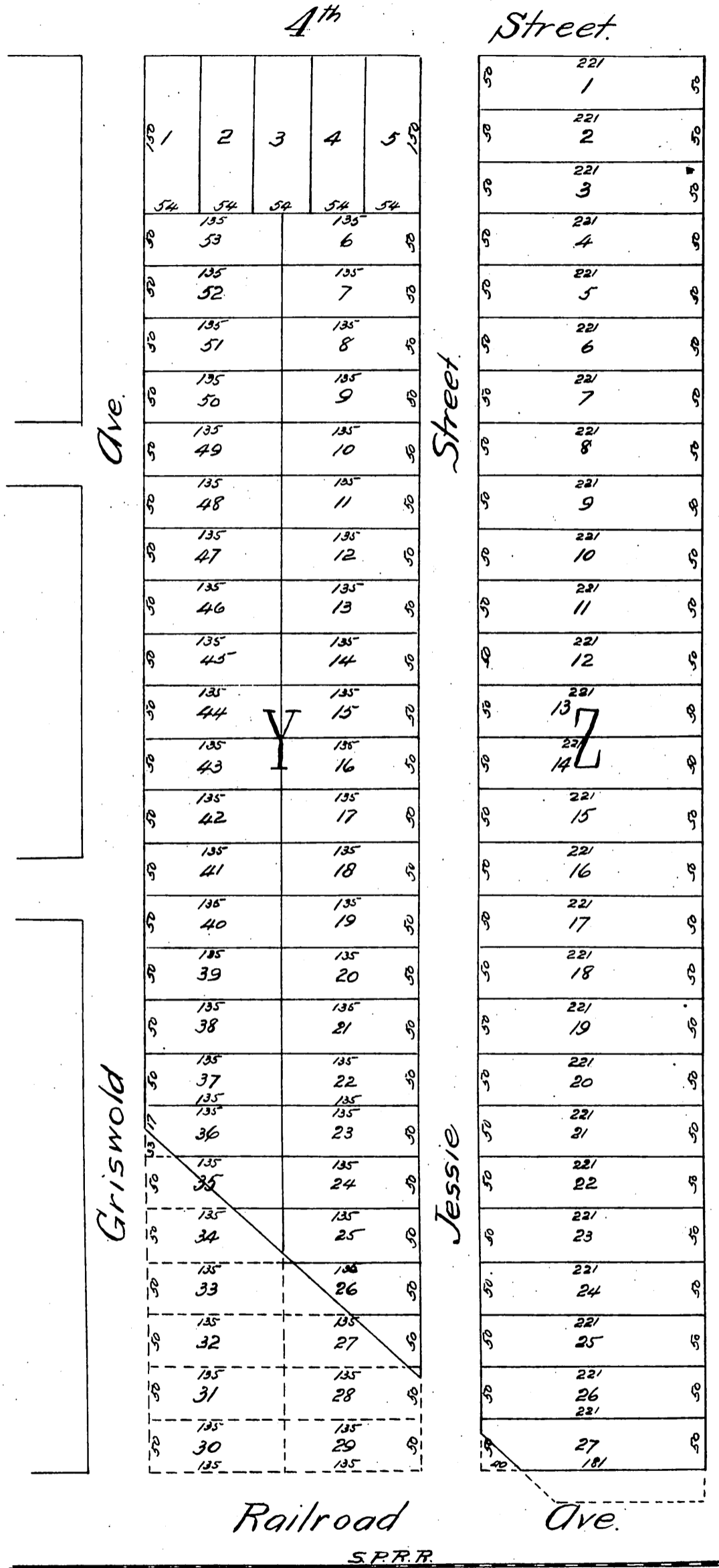


Map
OF
E. Avery McCarthy's
Subdivision.

of part of Block 230 Macloy's Subdivision
of San Fernando Rancho
Los Angeles County California

Surveyed Aug 1887 by Henry Y. Harding C.E.

Scale 50 ft = 1 in.



A full, true and correct copy of the original
(reduced to the scale of 120 feet to one inch)
recorded June 2, 1888 at 5 min. past 11 A.M.
at request of E.A. McCarthy.

Frank A. Gibson, County Recorder.
by George Bugbee, Deputy.