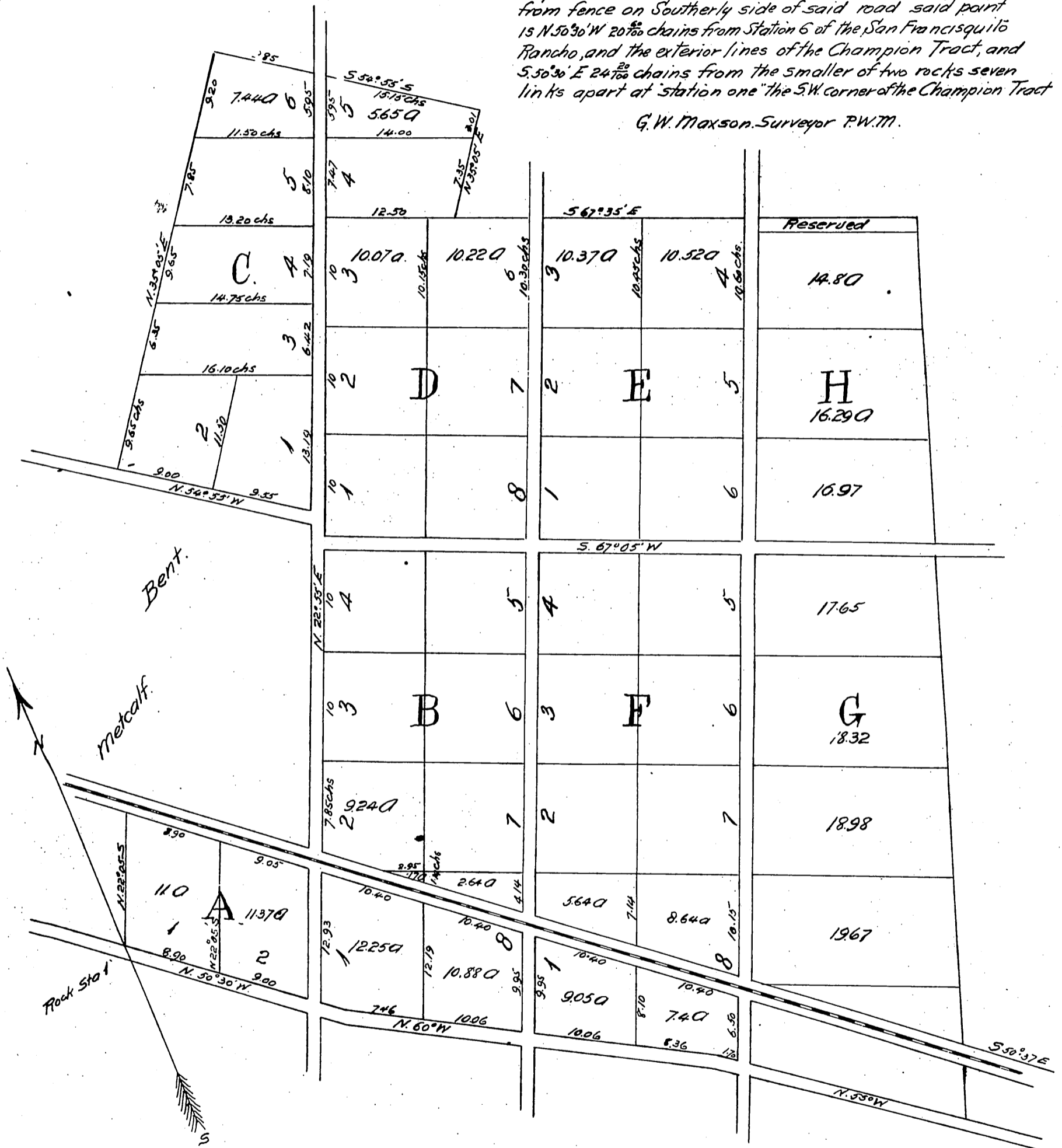


Map OF Maxson's Subdivision of McLain Estate.

Description

Beginning at a point in the road from San Gabriel to La Puente N 22° 5' E distant twenty links from a conical shaped rock distant on same course eighteen links from fence on Southerly side of said road said point 15 N 50° 30' W 20⁰⁰/₁₀₀ chains from Station 6 of the San Francisquito Rancho, and the exterior lines of the Champion Tract, and S 50° 30' E 24⁰⁰/₁₀₀ chains from the smaller of two rocks seven links apart at station one the S.W. corner of the Champion Tract

G. W. Maxson, Surveyor P.W.M.



Scale 2 1/2 chs. per inch.

Recorded at request of Geo. E. Freeman
Mar. 28, 1888 at 14 min. past 1 P.M.
in Book 28 Page 85 of Miscellaneous
Records Los Angeles County Records.
Frank A. Gibson County Recorder
by Walter S. Marchant Deputy

A full, true and correct copy of the original
recorded June 2, 1888 at 51 min. past 3 P.M.
at request of Geo. E. Freeman.

Frank A. Gibson, County Recorder.
by George Bugbee, Deputy.