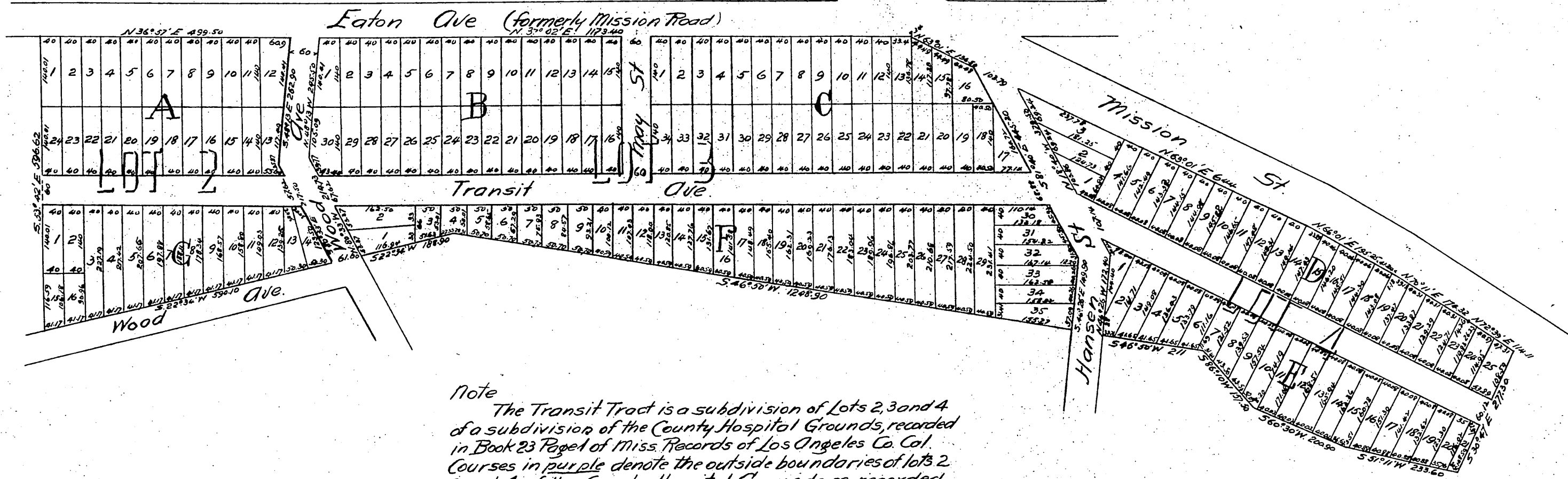


# Map OF THE Transit Tract Los Angeles, Cal.

Surveyed March 1888 by V.J. Rowan, Surveyor.

Scale 100 ft to one inch.



*Note*  
The Transit Tract is a subdivision of Lots 2, 3 and 4  
of a subdivision of the County Hospital Grounds, recorded  
in Book 23 Page 1 of Miss. Records of Los Angeles Co. Cal.  
Courses in purple denote the outside boundaries of lots 2  
3 and 4 of the County Hospital Grounds as recorded  
within which boundaries said Transit Tract is included

A full, true and correct copy of the original  
(reduced to the scale of 200 feet to one inch)  
recorded June 13, 1888 at 49 min. past 3 P. M.  
at request of County Clerk

Frank O. Gibson County Recorder  
by George Kuyber, Deputy.