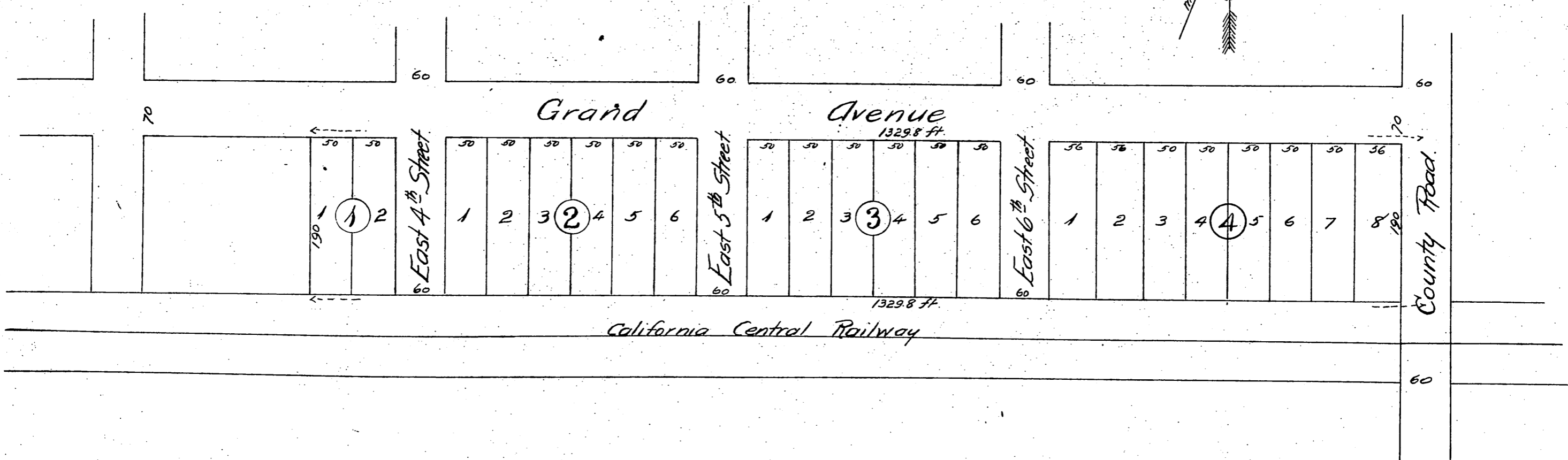
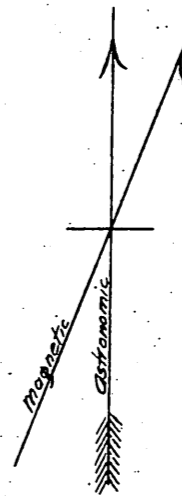


*L. W. Leach's Subdivision
of a part of Washburn & Underwoods Addition to the
Town of Alosta*



*A full, true and correct copy of the original
(reduced to the scale of 120 feet to one inch)
recorded June 16 1888 at 46 min. past 12 M.
at request of L. W. Leach.*

*Frank A. Gibson County Recorder
by George Bugbee, Deputy.*