

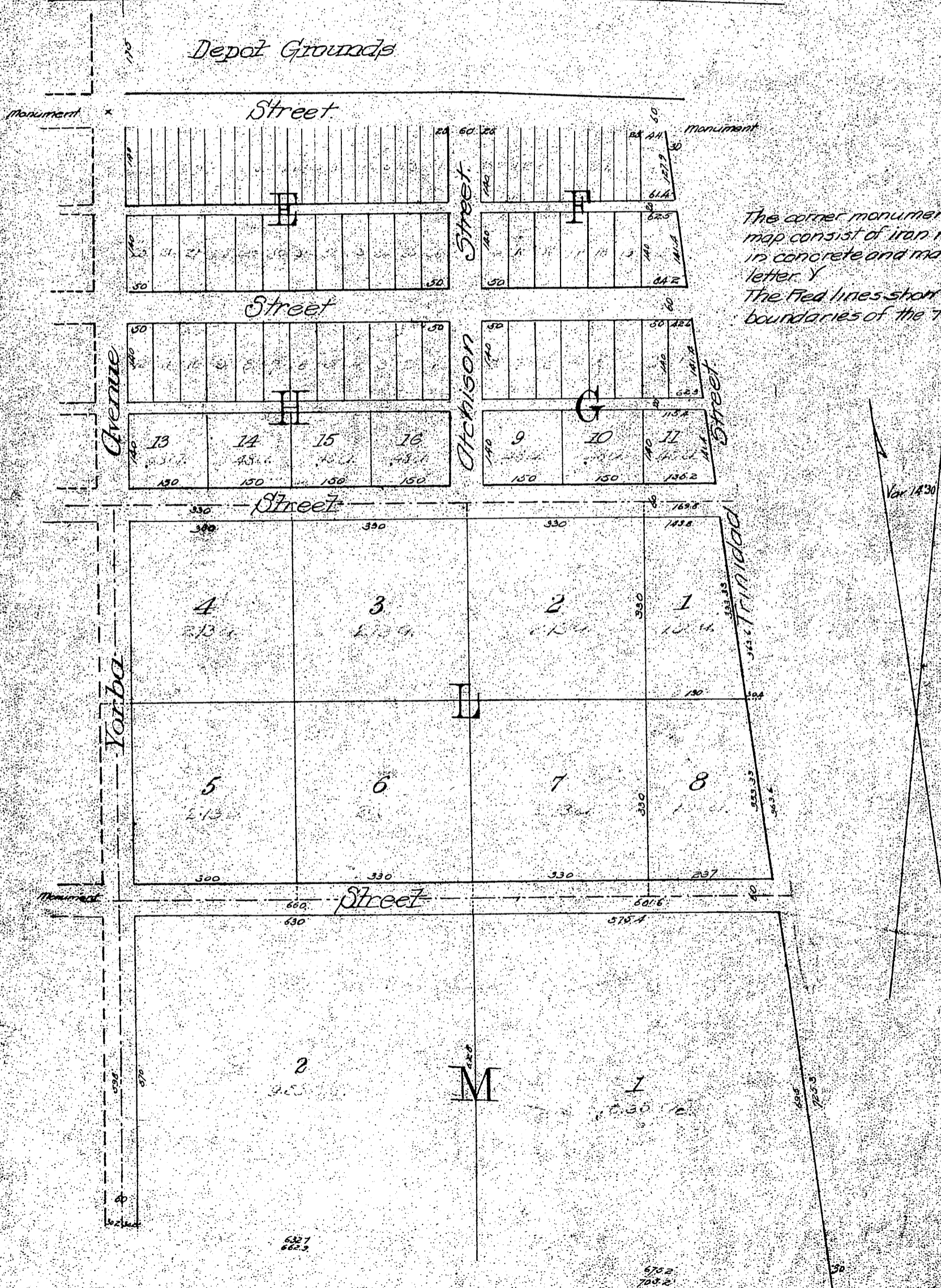
Description

Commencing at a point 73.9 ft. 50°27' E. of the N.W. corner of the Felipe Yorba Tract in the Rancho Cañon de Santa Ana, thence 30°27' E. 2213.6 ft. thence S. 80°25' E. 427.5 ft. thence S. 80°33' E. 630 ft. thence S. 78°12' E. 605 ft. thence S. 76°45' E. 632.7 ft. thence S. 76°54' E. 703.2 ft. thence North 2137.1 ft. thence N. 79°53' H. 374.2 ft. thence N. 82° H. 660 ft. thence N. 8° E. 210 ft. thence N. 88° H. 1442.1 ft. to point of beginning.

Notes

The acreage property above mapped is calculated to the center of the streets all around.
 Yorba is bounded on the North by the O.T. & S.F. R.R. and Santa Fe St, on the East by the lands of Tomas Yorba, on the South by the Anaheim Union Water Company's ditch and on the West by the lands of Teodosio Yorba.

O. T. & S. F. R. R.



The corner monuments shown on map consist of iron rods embedded in concrete and marked with the letter Y.
 The Red lines show the exterior boundaries of the tract.

(Reduced to the scale of 200 feet to one inch)
 Recorded June 14, 1888
 at request of J.C. Travis.