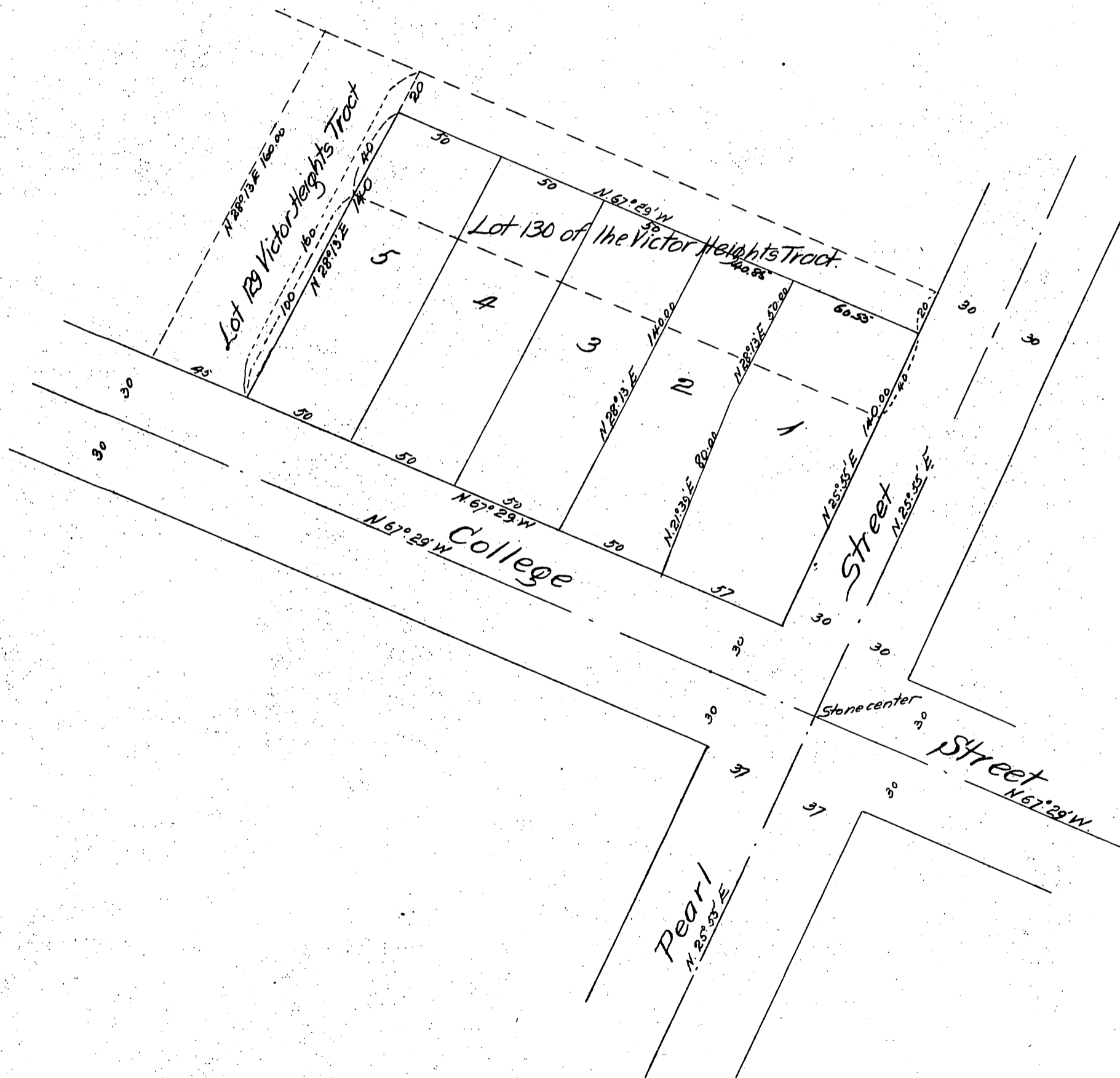


PLAT
 OF
 M. L. Wicks' Subdivision
 of lot at the N.W. corner of College and Pearl Streets
 also part of lot 130 Victor Heights Tract.
 Recorded Book 12 Page 40 Miss. Records.
 Los Angeles City, Cal

Scale 40 feet to one inch.

Note - For information in reference to vacating a certain portion of Pearl Street see ordinance No. 367 as adopted by the Council of the City of Los Angeles December 6th 1887.



A full, true and correct copy of the original (reduced to the scale of 50 feet to one inch) recorded June 21, 1888 at 9 min. past 11 A.M. at request of M. L. Wicks.

Frank A. Gibson. County Recorder.
by George Ruyter. Deputy.