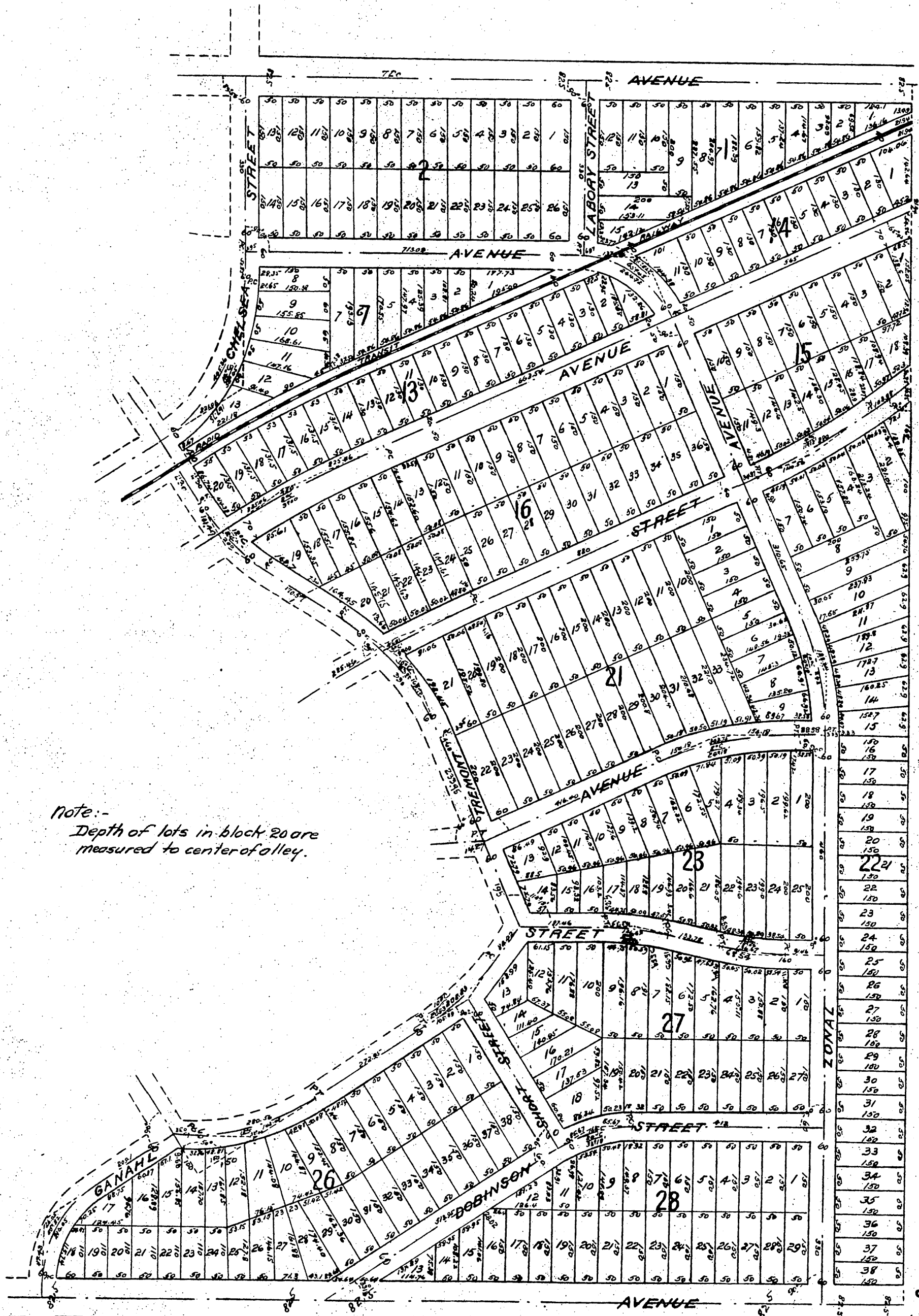


Surveyed and plotted Feb. 1888 by
W.S. Kinnear.
Los Angeles, Cal.



Note:-
Depth of lots in block 20 are
measured to center of alley.

A full, true and correct copy of the original (reduced to 200ft to 1 in)
recorded June 21 1888 at 49 min. past 11 A.M. at request of A.E. Tomeray.
Frank A. Gibson County Recorder.
by George Ruybee Deputy