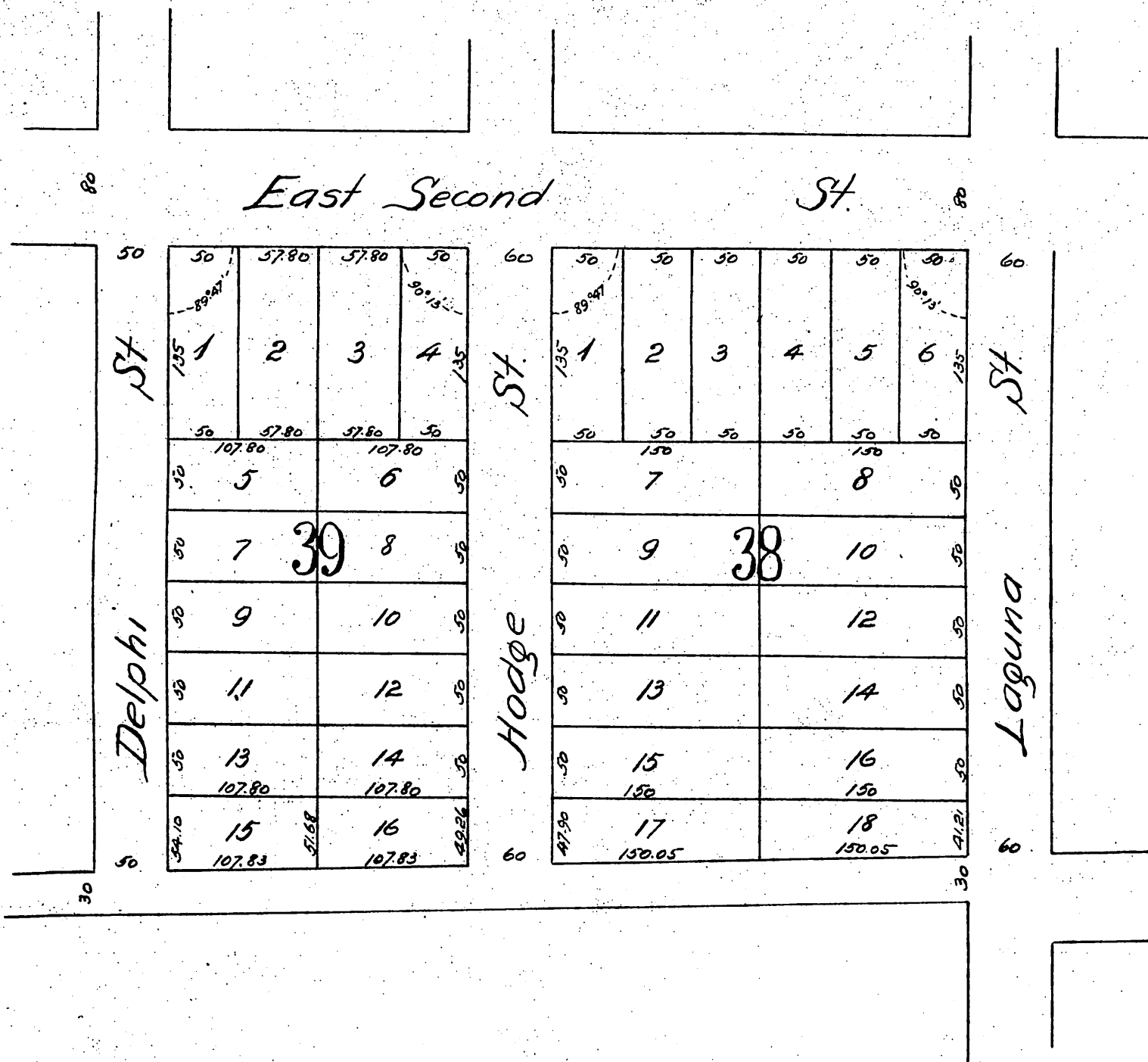


Subdivision of Blocks 38 and 39
 E.S. Fields Occidental Heights Tract
 Los Angeles County, Cal.

Made by the Southern Cal. Land League in February 1888
 Geo. B. King, Surveyor.

Scale 100 ft to one inch.



A full, true and correct copy of the original
 recorded June 22, 1888 at 56 min. past 8 A.M.
 at request of Gen. John R. Brierly.
 Frank A. Gibson County Recorder.
 by George Bugbee Deputy.