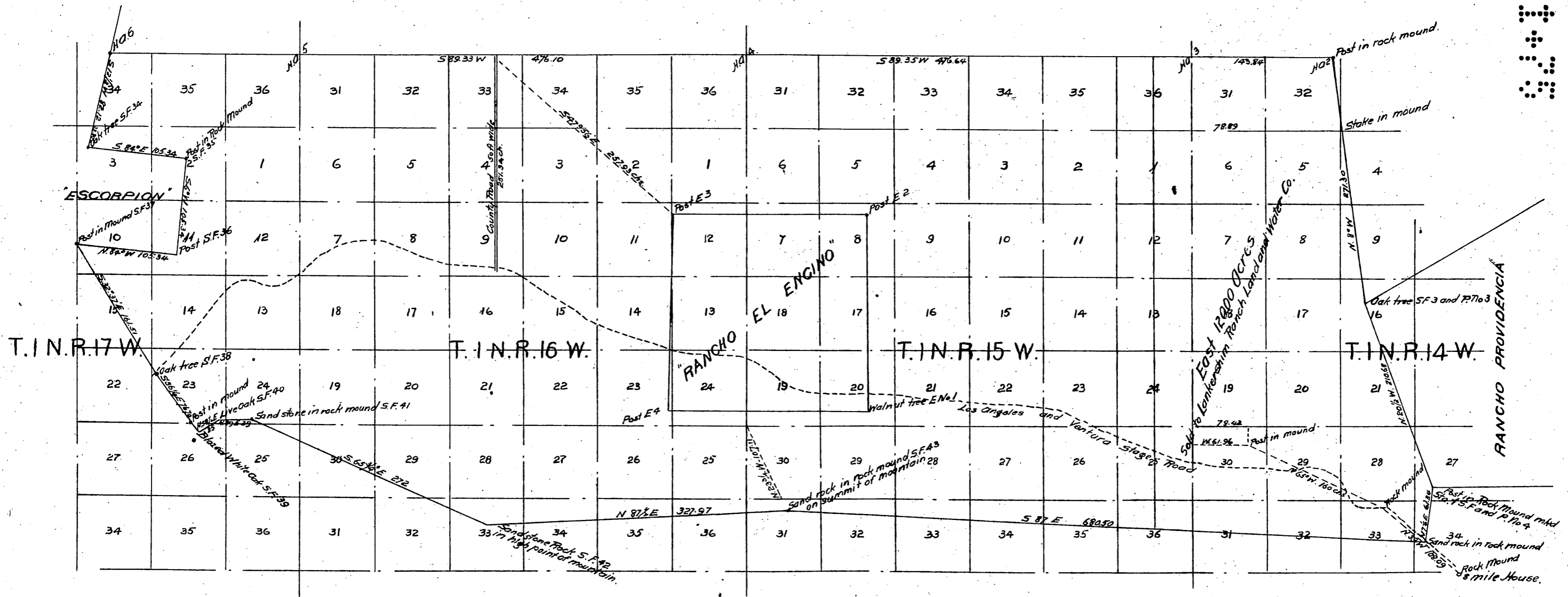


PLAT

of South 59,550 ⁸⁰/₁₀₀ acres of
Rancho Ex Mission San Fernando

Lands of San Fernando Farm Homestead Association.



This map is made from ^{map} made by W^m P. Reynolds from survey made under instructions of Commissioners L. D. Gavitt, Thos H. Burdick and H. Martyn Smith, appointed by the District Court of the 17th Judicial District for Los Angeles County, State of California, in case No. 1526 on the docket of said District Court. March 16, 1871

Section and Township connections from U.S. Survey Notes.
Variation 14°30' to 15°20' E Scale 60 chs. per inch.

W. J. A. Smith and E. DeCamp Plotters
June 21st 1888.

A full, true and correct copy of the original (reduced to the scale of 100 chs. to one inch) recorded June 22, 1888 at 30 min past 12 M at request of I. N. Van Nuys.

Frank A. Gibson, County Recorder
by George Bugbee Deputy.