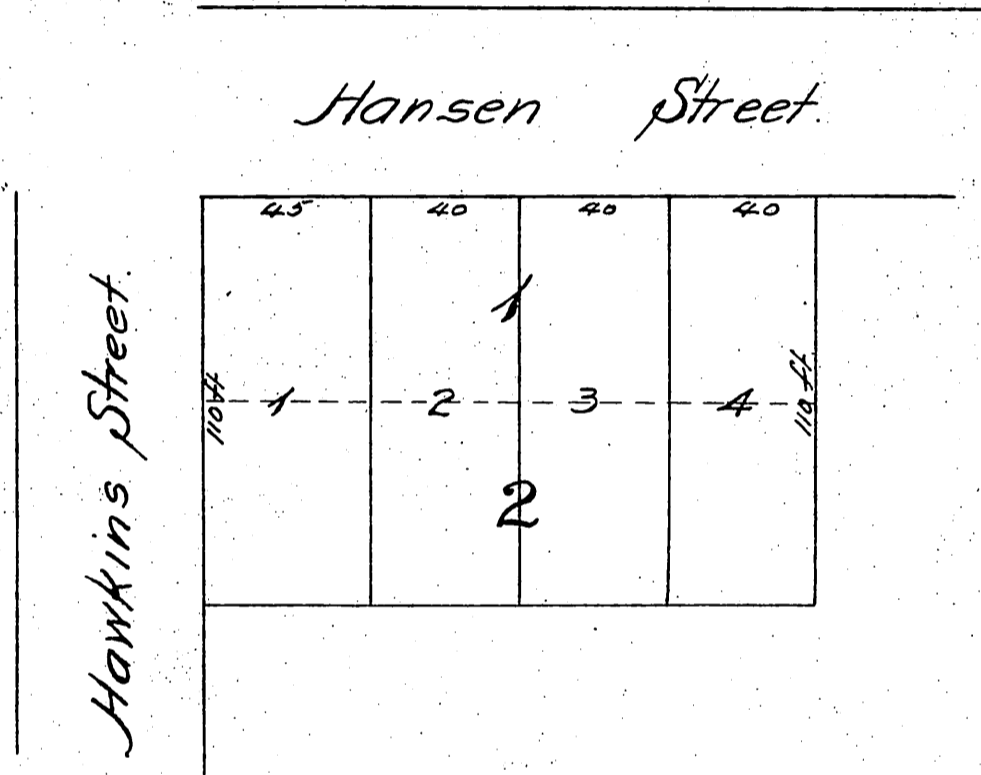


Map
 of
 J. E. Yoakum's Subdivision
 of lots 1 and 2 in Block 27 in East Los Angeles.
 Los Angeles County California.

Scale 20 feet one inch.



A full, true and correct copy of the original
 (reduced to the scale of 50 feet to one inch)
 recorded July 2, 1888 at 10 min. past 1 P.M.
 at request of J. E. Yoakum.

Frank A. Gibson, County Recorder.
 by George Bugbee, Deputy.