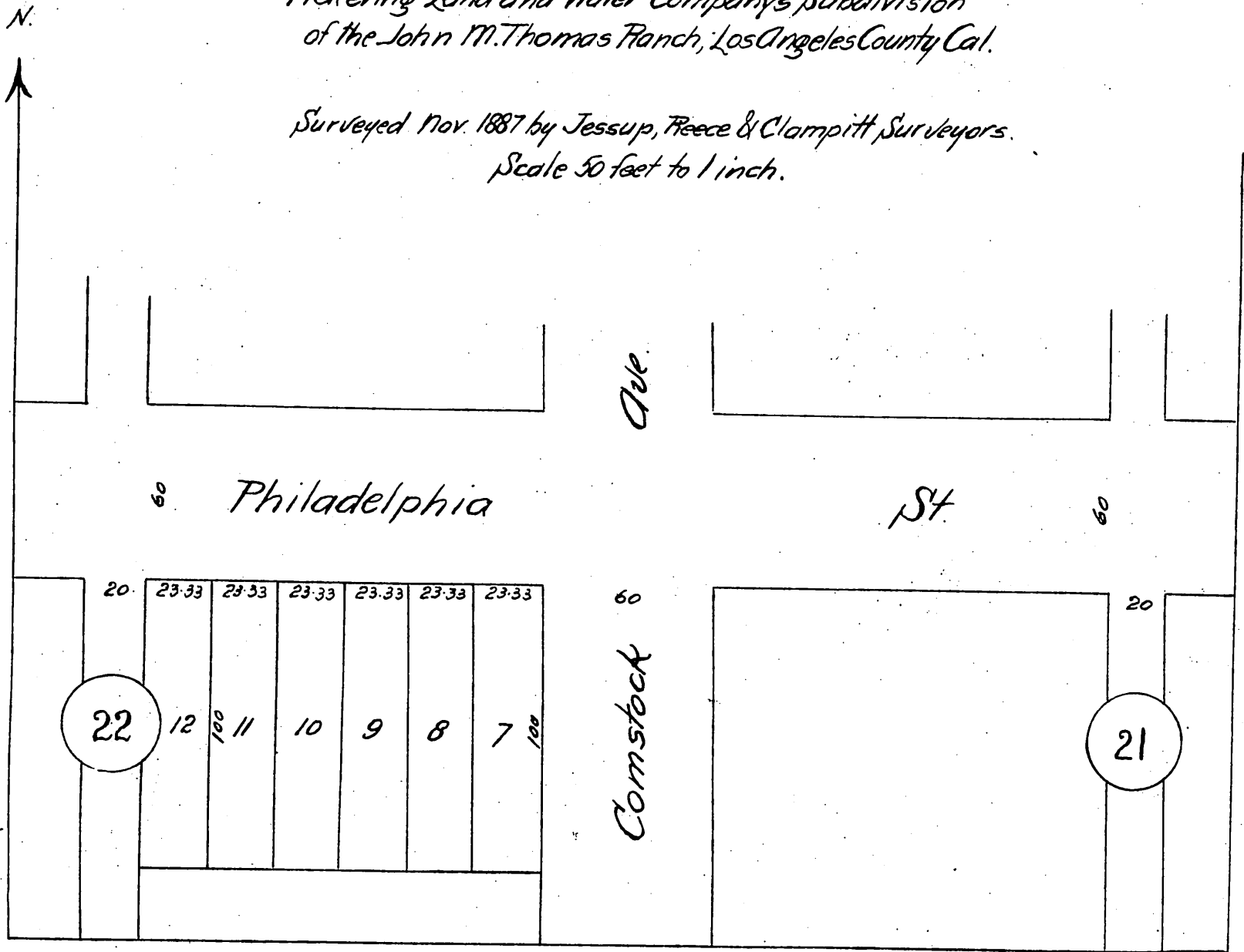


Nichols' Subdivision, Whittier.

Being a subdivision of lots 1 and 2 Blk 22 of the Pickering Land and Water Company's Subdivision of the John M. Thomas Ranch, Los Angeles County Cal.

Surveyed Nov. 1887 by Jessup, Freece & Clampitt, Surveyors.
Scale 50 feet to 1 inch.



A full, true and correct copy of the original recorded July 6, 1888 at 56 min. past 11 A.M. at request of J.B. Nichols.

Frank A. Gibson, County Recorder.
by George Bugbe, Deputy.