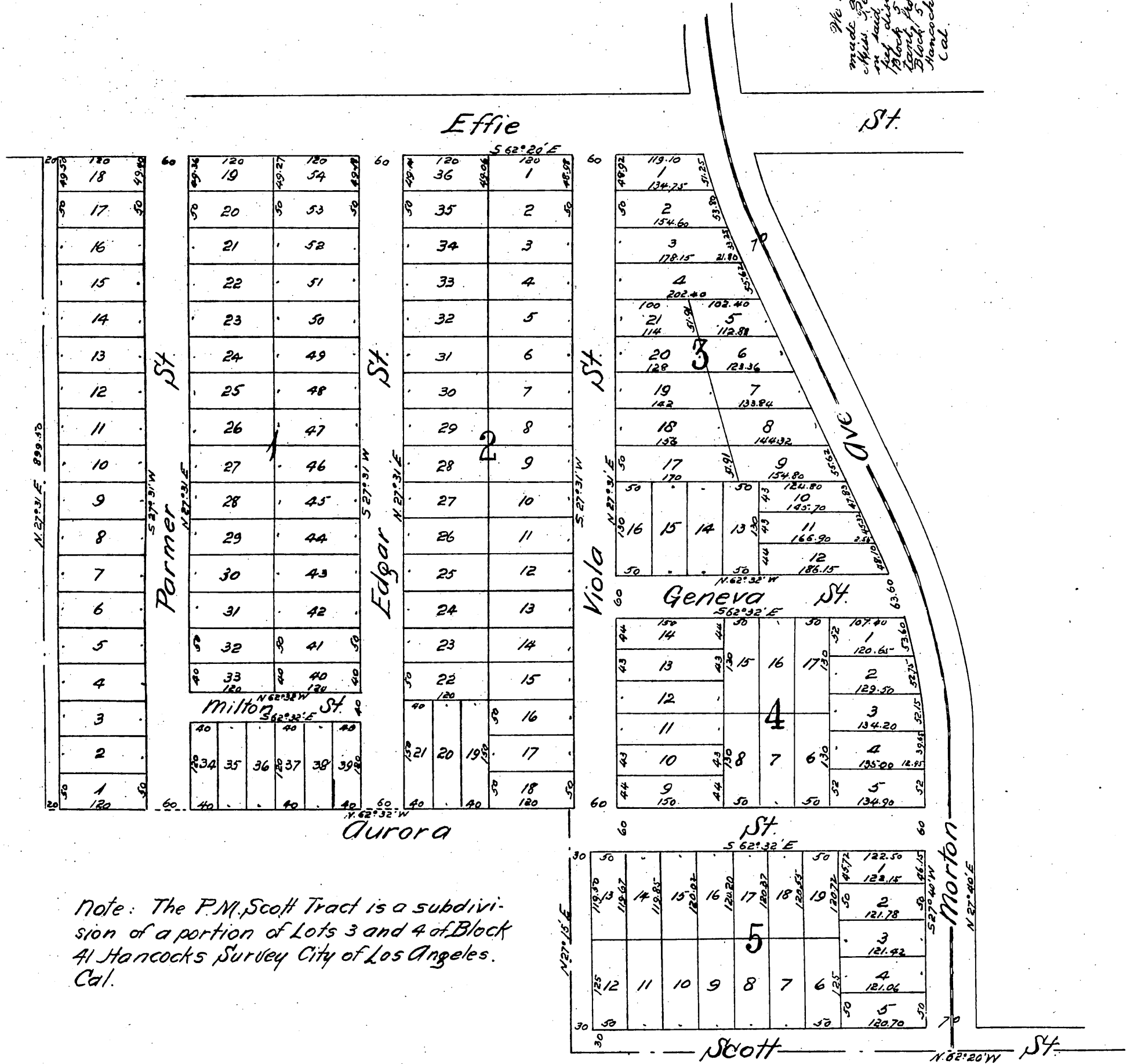


Map OF THE P.M. Scott Tract City of Los Angeles, Cal.

Surveyed Nov. 1887 by Pillsbury & Cleveland.
Scale 100 ft to 1 inch.

Appendix to Map of P.M. Scott Tract
The hereby certify that we surveyed the P.M. Scott Tract and
made a map of same which is recorded in Book 31 Page 83
Miss Records of Los Angeles Cal. and that the original plan
is laid out as the intersecting of a line southerly and 30
feet easterly from and parallel with the line southerly line of
Block 5 of said Tract and the line westerly and 30 feet easterly
line from and parallel with the line westerly line of Block 4.
Block 5 is the south westerly corner of Lot 3 Block 4.
Hancocks Survey of City Donation Lots City of Los Angeles
Cal.
George E. Cleveland
a member of the firm of Pillsbury & Cleveland.



Note: The P.M. Scott Tract is a subdivi-
sion of a portion of Lots 3 and 4 of Block
41 Hancocks Survey City of Los Angeles,
Cal.

A full, true and correct copy of the original
(reduced to the scale of 100 feet to one inch)
recorded July 7, 1888 at 5 min past 4 P.M.
at request of P.M. Scott.

Frank A. Gibson. County Recorder.
by George Ingbee. Deputy.