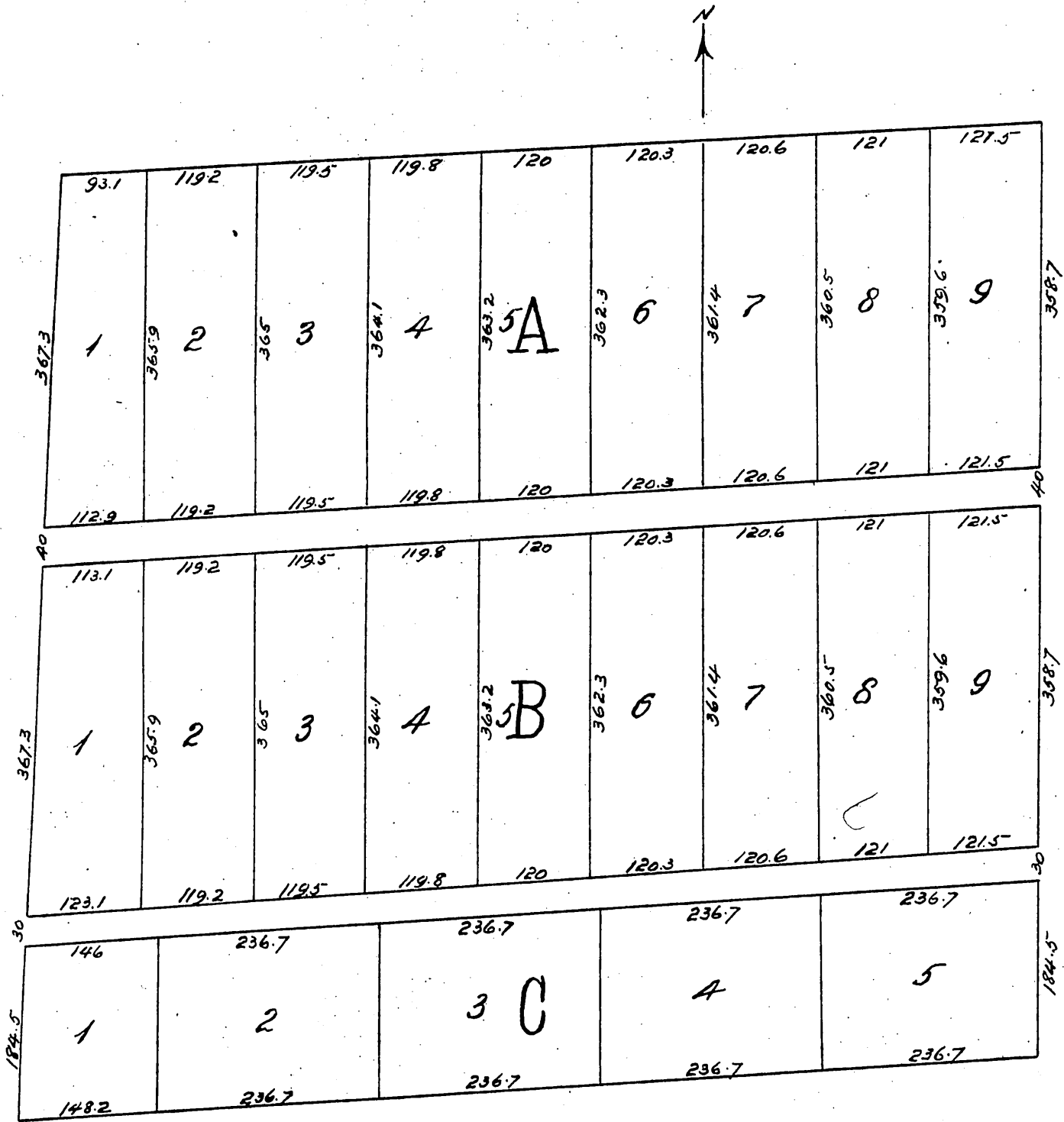


Map of a Resubdivision of lots 12 and 13 of S. Townsend's Subdivision

of lands within the Rancho San Pasqual
according to a map thereof of record in
the office of Los Angeles County Recorder
in Book of Miscellaneous Records 16 at page 12

Surveyed Sep 5, 1887 by P. M. Gee Surveyor.



A full, true and correct copy of the original
(reduced to the scale of 150 feet to one inch)
recorded July 9, 1888 at 4 min. past 12 M at
at request of W. S. Wright.

Frank O. Gibson, County Recorder.
by George Baylee, Deputy.