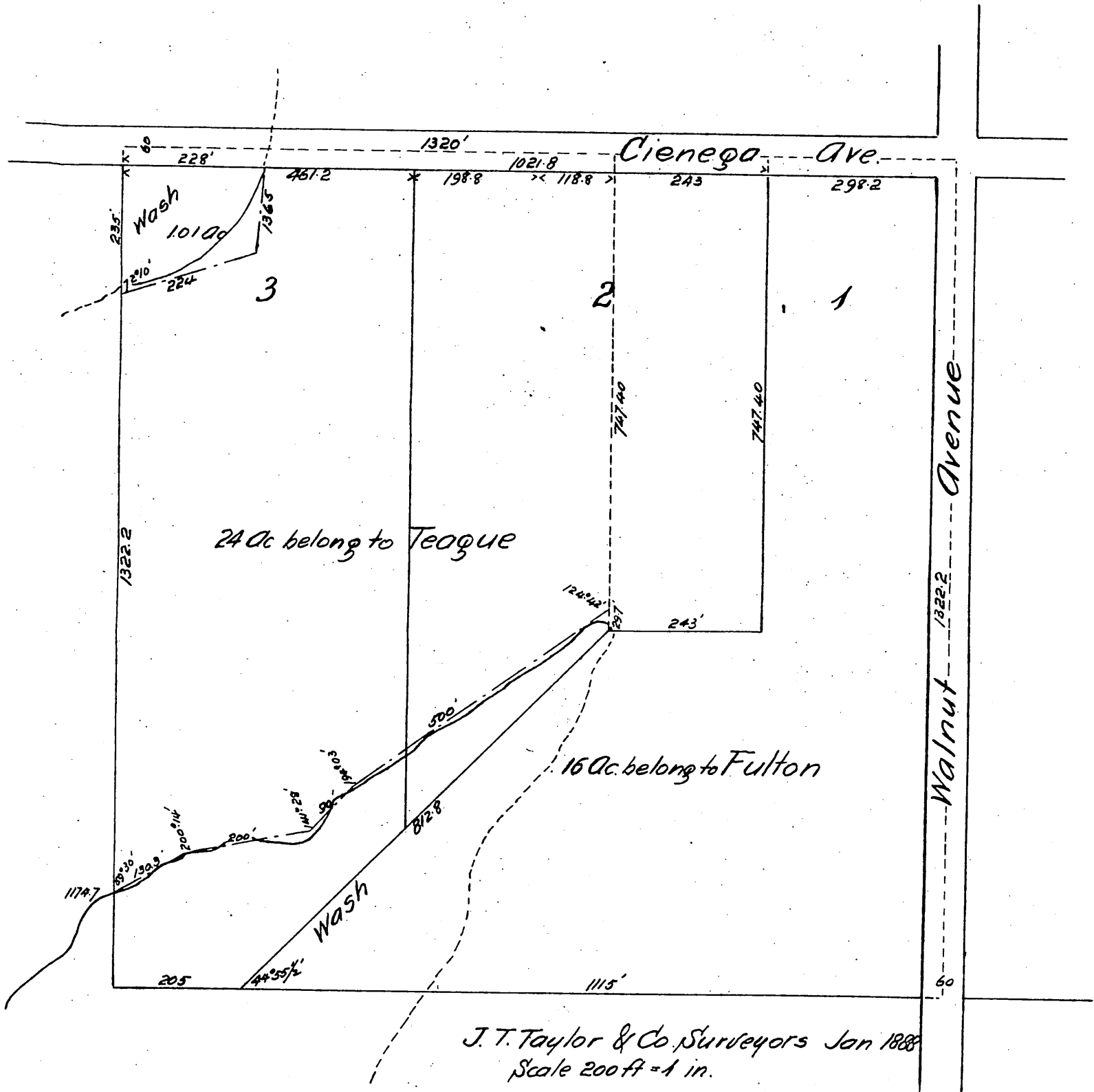


Map  
OF  
C. P. Teague's Subd'n.  
S E 1/4 of the N. E 1/4 of Sec. 10  
T 1 S. R 9 W. S B M.

According to recorded map of the subdivision  
of the Tr. Addition to San Jose & portion of  
the Tr. San Jose Los Angeles Co. Cal.  
Subdivided at request of San Jose Tr. Co.



A full, true and correct copy of the original  
recorded July 9, 1888 at 8 A. M. at request of  
Jas. T. Taylor.

Frank O. Gibson, County Recorder.  
by George Bugbee, Deputy.