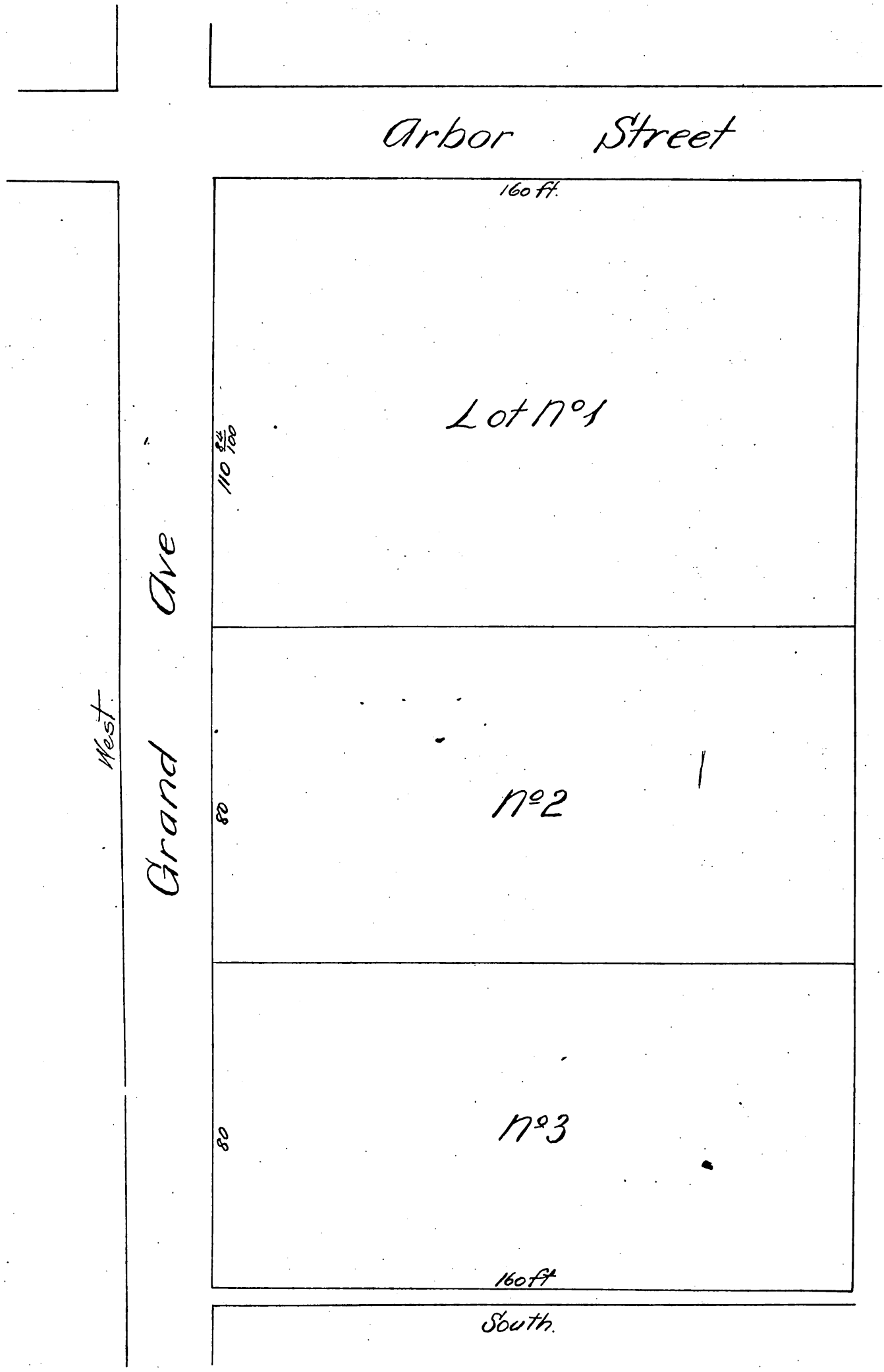


# Map OF

## H. C. Harris' Subdivision

of lots Nos. 38 and 39 of I. M. Hill Tract  
as shown by map recorded in Book 7, Page  
95 Miscellaneous Records of Los  
Angeles County California.

{ For appendix See Book 48.  
Page 212. Miscellaneous Records }



A full, true and correct copy of the original  
recorded July 12, 1888 at 53 min. past 10 A. M.  
at request of R. H. Pinney.  
Frank A. Gibson, County Recorder.  
by George Bugbee. Deputy.