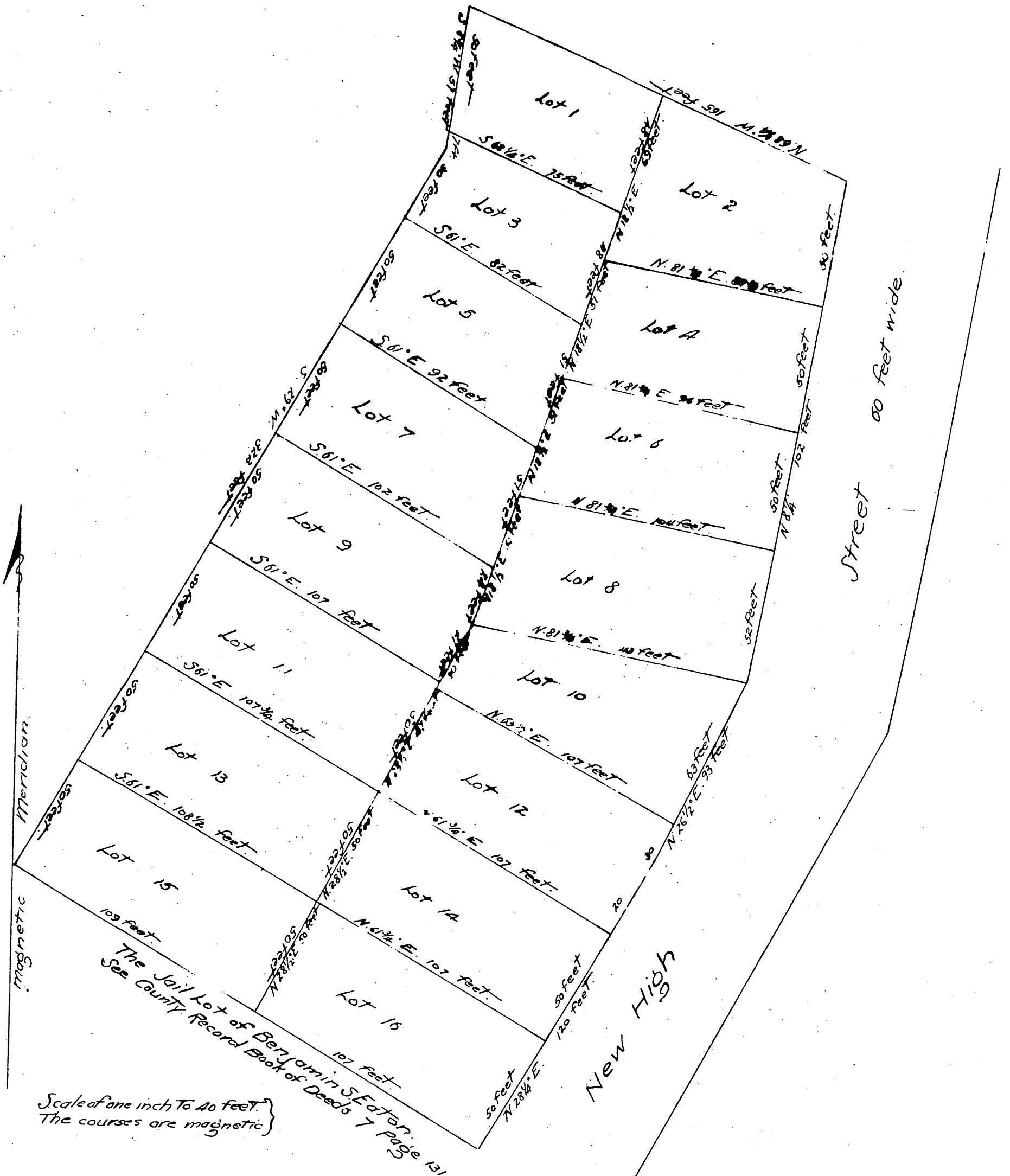


MAP

of the Subdivision of a Lot of Land granted by the City of Los Angeles to Hiram McLaughlin by Deed recorded in Book 4 of Deeds page 170 in the Los Angeles County Record and described in a Certificate of Sheriff's Sale to P. Beaudry dated June 15th 1867 Surveyed December 6th 1867 by Geo. Hansen County Surveyor of Los Angeles County and subdivided August 20th 1868 under the direction of Mr. P. Beaudry, by George Hansen aforesaid



Scale of one inch to 40 feet.
The courses are magnetic

A true copy of the original recorded November 11th 1868 at
10 hrs. A.M. at request of P. Beaudry
T.D. Matt. Co. Recorder
By S.W. Gillette Deputy.