

PLAN

OF

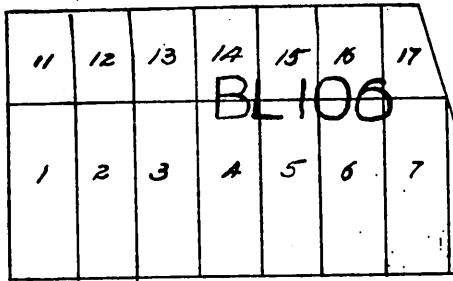
lots & fractional lots

of the 39 acre tract conveyed by the City of Los Angeles to Wm. Moore, December 20 1858 (see County Record Book of Deeds 4, page 343) and known as:

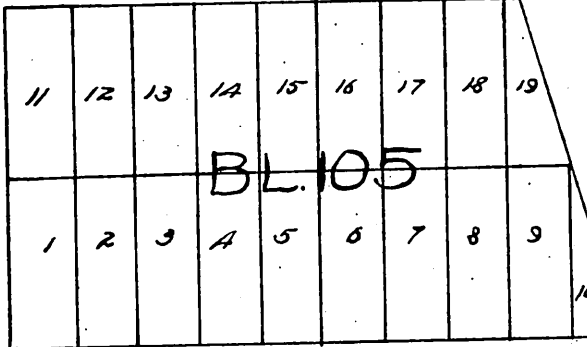
"THE BEAUDRY TRACT"

in the S.W. part of the City of Los Angeles
Surreyed and subdivided by William Moore August 25th 1868
Scale of one inch to 180 feet. The courses are magnetic.

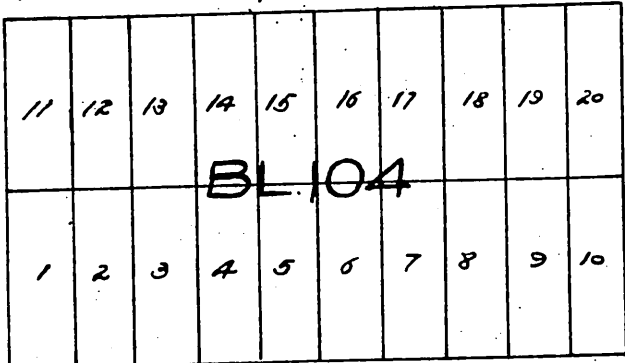
Note by County Recorder: The original map presented for record is on a scale of 120 feet to the inch, and was reduced as here appears to accommodate the size of this Book.



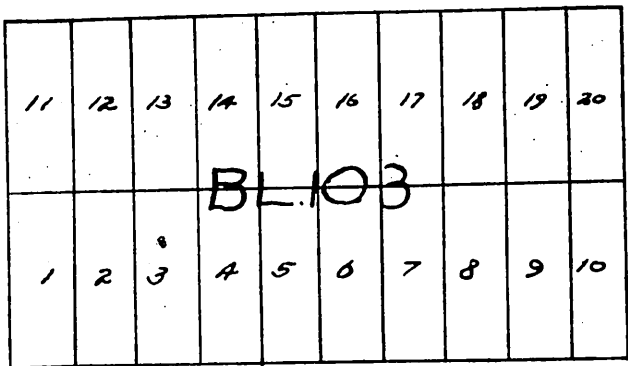
Beaudry St.



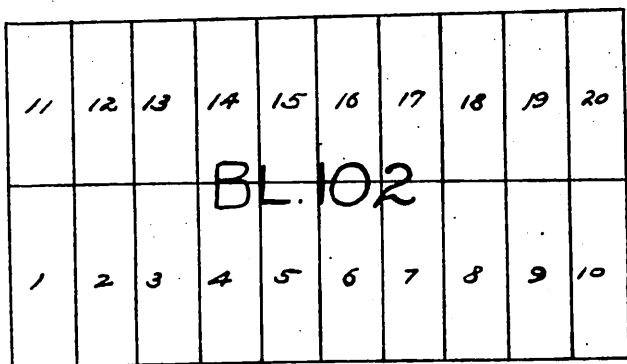
Grasshopper St.



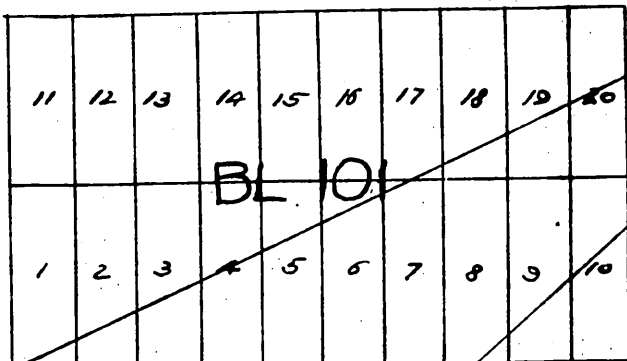
Flower St.



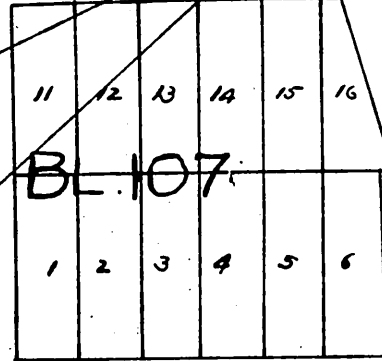
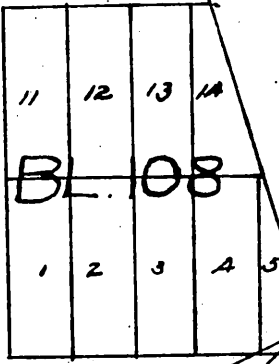
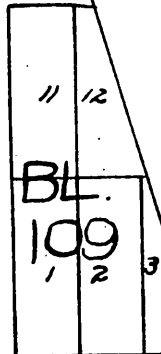
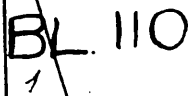
Hope St.



Charity St.



Olive St.



True meridian.

Mag. meridian.

Vide Book 2 Miscellaneous Records p. 585 for a second record of this map solely to correct name it being "Belleve Terrace Tract" and not Beaudry Tract J.W. Sillette Co. Recorder Sept. 10 1874.

A full true and correct copy of the original recorded December 26th 1868 at request of Prudent Beaudry.
T.D. Mott Recorder.
By S.H. Mott Deputy.