

3210

MAP

of the

35 ACRE LOTS

of the Los Angeles City Lands "Harrook Survey"
East of Los Angeles River

surveyed by

G. Hansen.

Co. Surveyor.

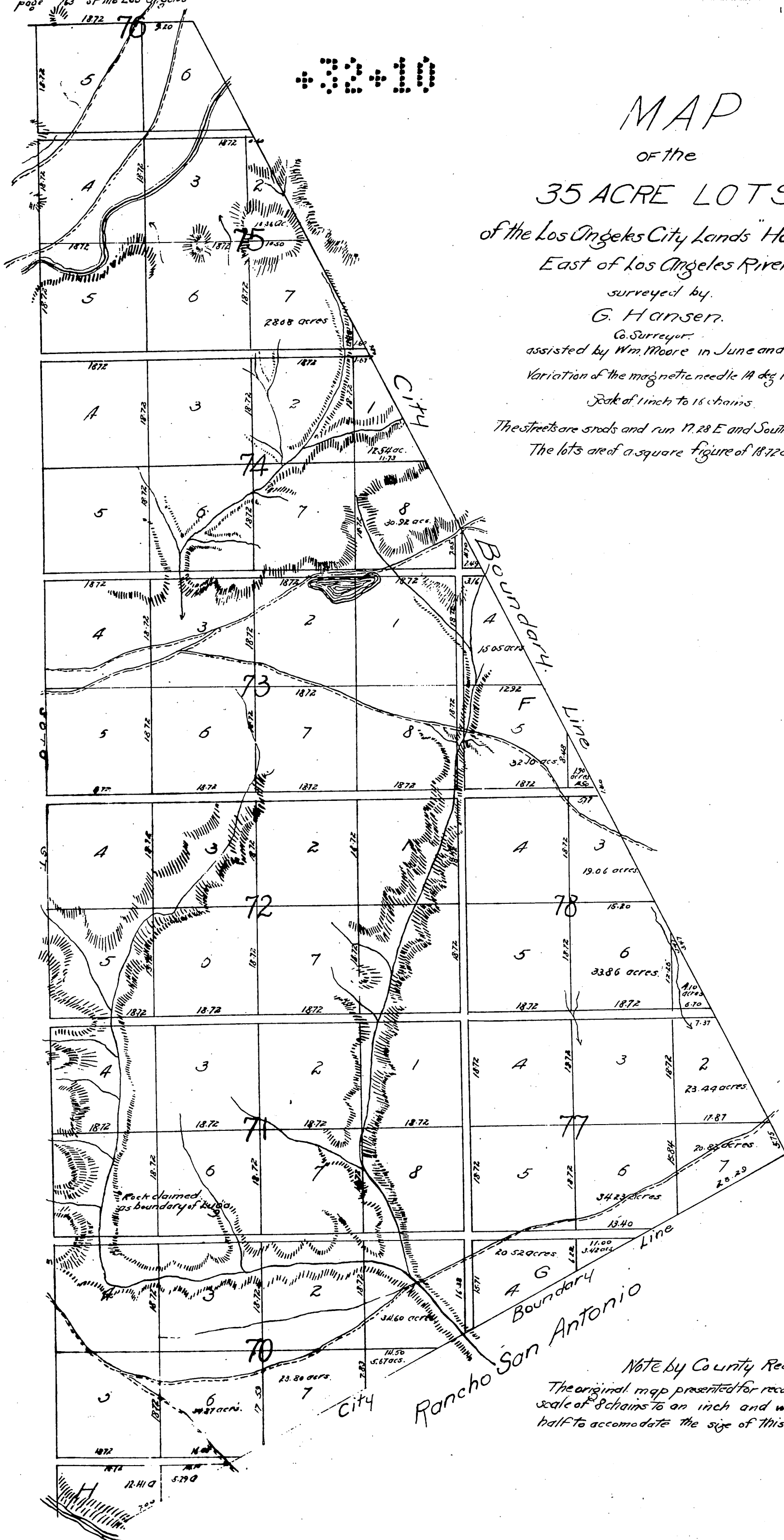
assisted by Wm. Moore in June and July 1868

Variation of the magnetic needle 19 deg 15 min East.

Scale of 1 inch to 16 chains.

The streets are roads and run N. 28 E and South 62° East.

The lots are of a square figure of 18.72 chs each side.



Note by County Recorder

The original map presented for record was on a scale of 8 chains to an inch and was reduced one half to accommodate the size of this Book.