

MAP

OF A
tract of land

Situate between Temple Buena Vista, Eternity and
Short Streets and the land of the Protestant Cemetery.

in the

City and County of Los Angeles State of California.
Subdivided in July and August 1868 by order of the
Mayor & Common Council.

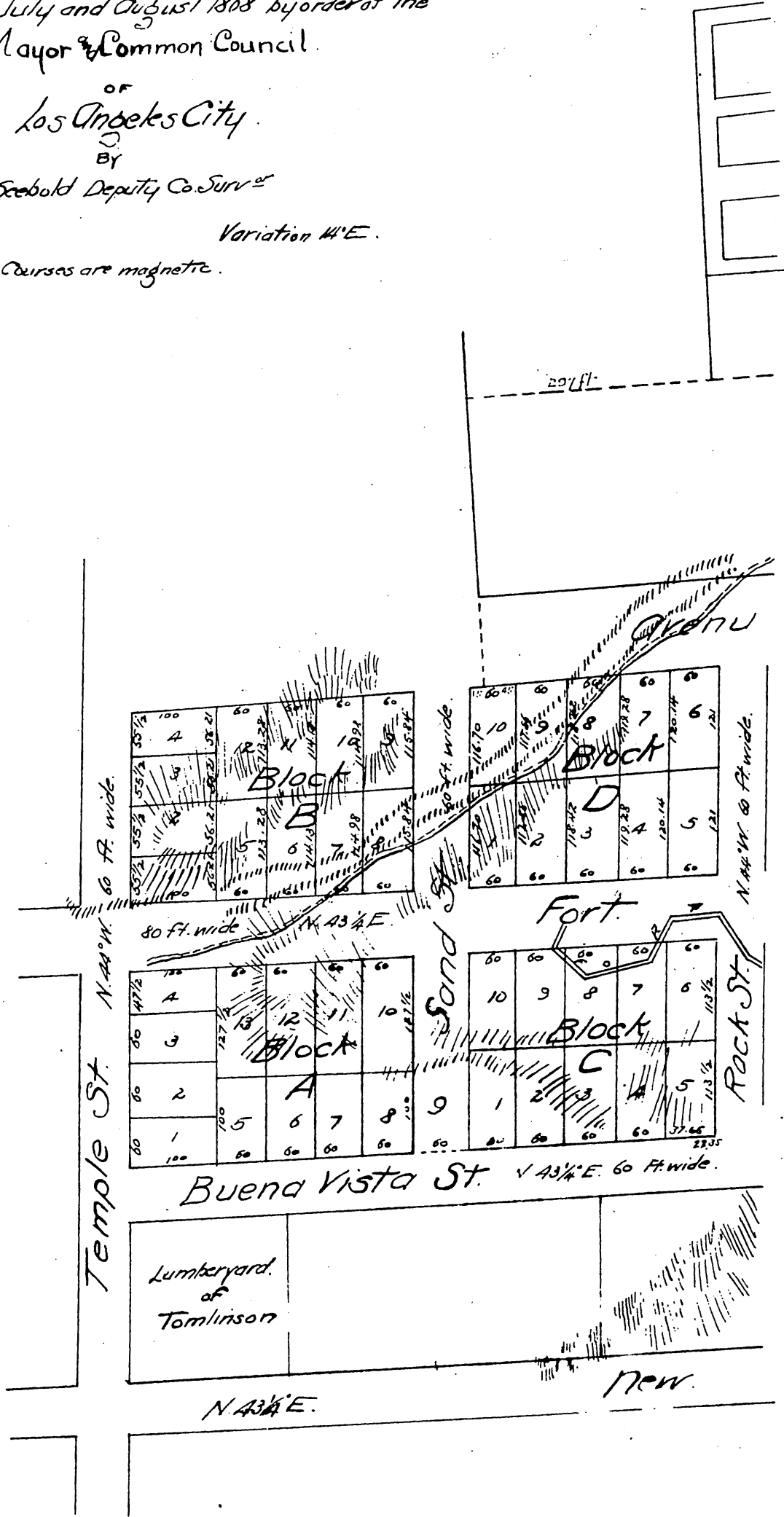
OF
Los Angeles City.

BY
L. Seibold Deputy Co. Surv^r

Scale 660 feet per inch.

Variation 41'E.

Courses are magnetic.



Note by Recorder: The original map presented for record was on a scale of 201.72:1 to an inch and was reduced to accommodate the size of this Book.

A true and correct copy of the original recorded November 23^d 1868
at request of A. S. King City Attorney. T. D. Matt Recorder.
by S. H. Matt Deputy.