



Plan

OF THE

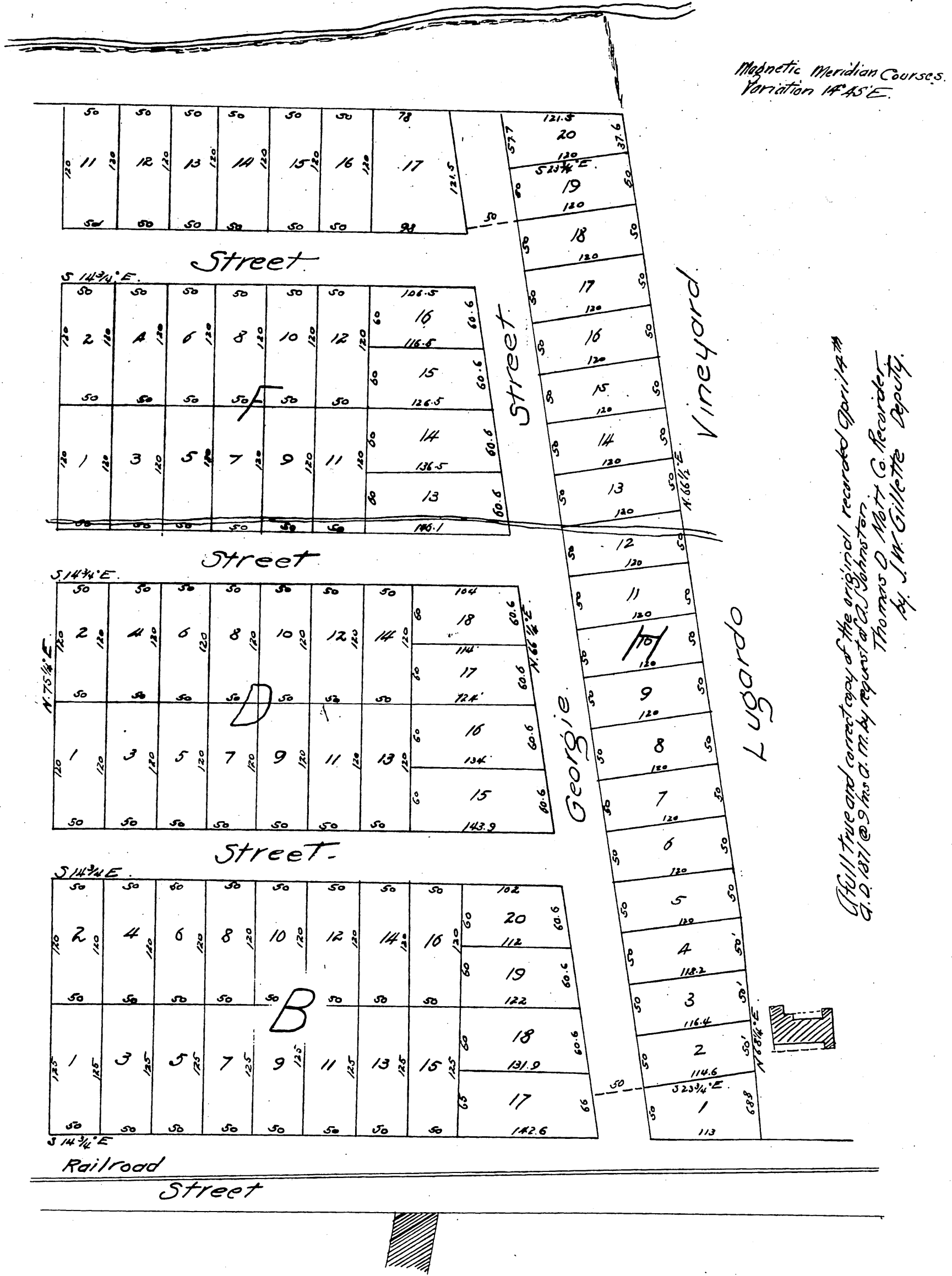
JOHNSTON TRACT

at the corner of First and Alameda Sts.

Los Angeles City.

Surveyed in March 1871 at request & under instructions of
Messrs T. D. Matt M. Brundige & A. J. Johnston by
sgt Frank Lecœur County Surveyor of Los Angeles County.

Scale 100 Ft. per inch being $\frac{1}{4}$ size of original map.



Magnetic Meridian Courses.
Variation 14° 45' E.

Full true and correct copy of the original recorded April 14th
A. D. 1871 @ 9 hrs. A. M. by request of A. Johnston.
Thomas O. Matt Co. Recorder
By J. W. Gillette Deputy.