

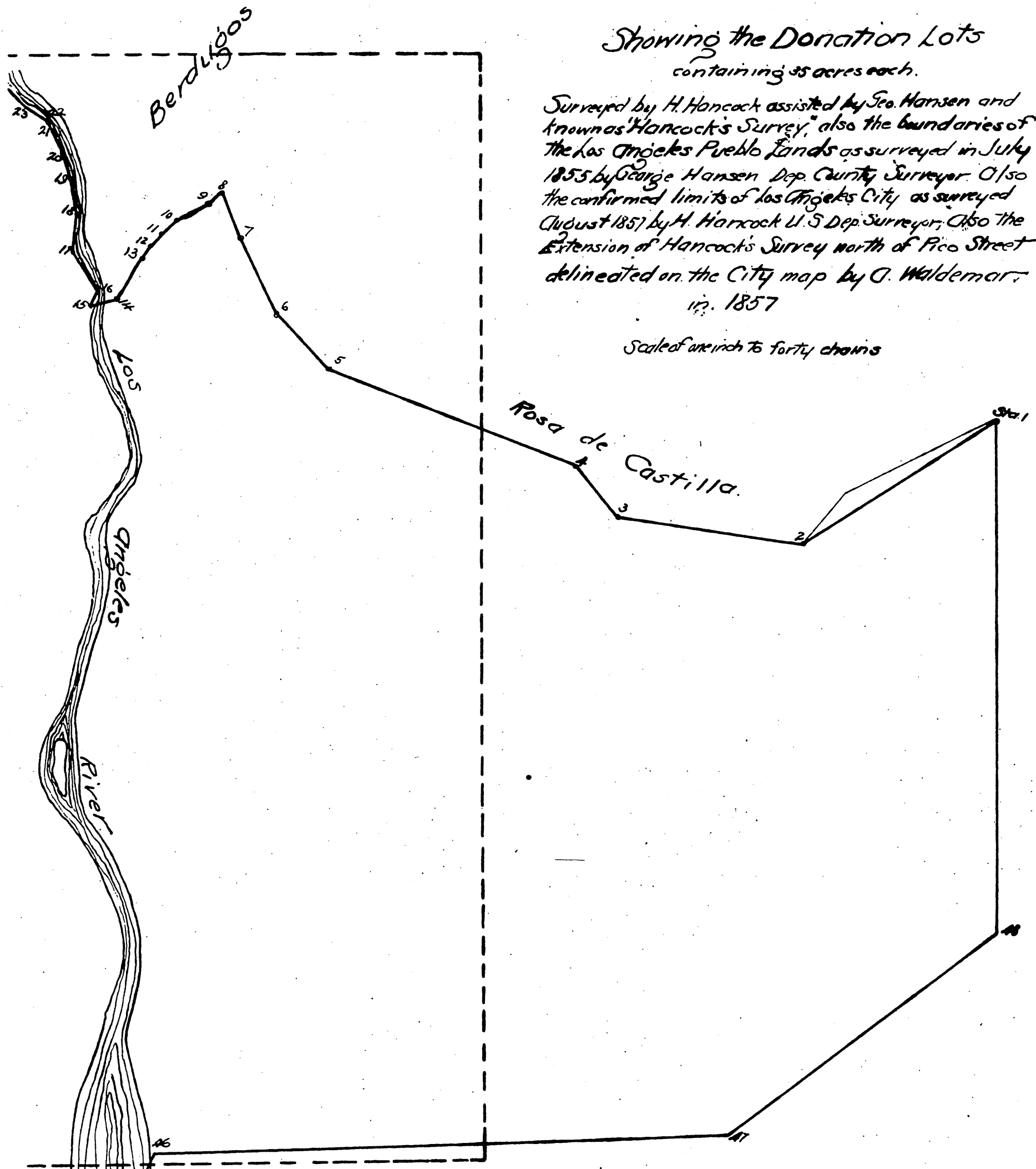


MAP

Showing the Donation Lots containing 35 acres each.

Surveyed by H. Hancock assisted by Geo. Hansen and known as Hancock's Survey, also the boundaries of the Los Angeles Pueblo Lands as surveyed in July 1855 by George Hansen Dep. County Surveyor. Also the confirmed limits of Los Angeles City as surveyed August 1857 by H. Hancock U.S. Dep. Surveyor. Also the Extension of Hancock's Survey north of Pico Street delineated on the City map by O. Waldemar in 1857.

Scale of one inch to forty chains



Reho. San Antonio

- Boundary line of the Los Angeles Pueblo Lands surveyed by George Hansen in July 1855
- - - Confirmed limits of Los Angeles City surveyed by H. Hancock August 1857.

For interior lettering and marginal notes see next two pages.

Note by Recorder: The original of this map is on a scale of one inch to 20 chains but is here reduced one half to accommodate the size of this book.