

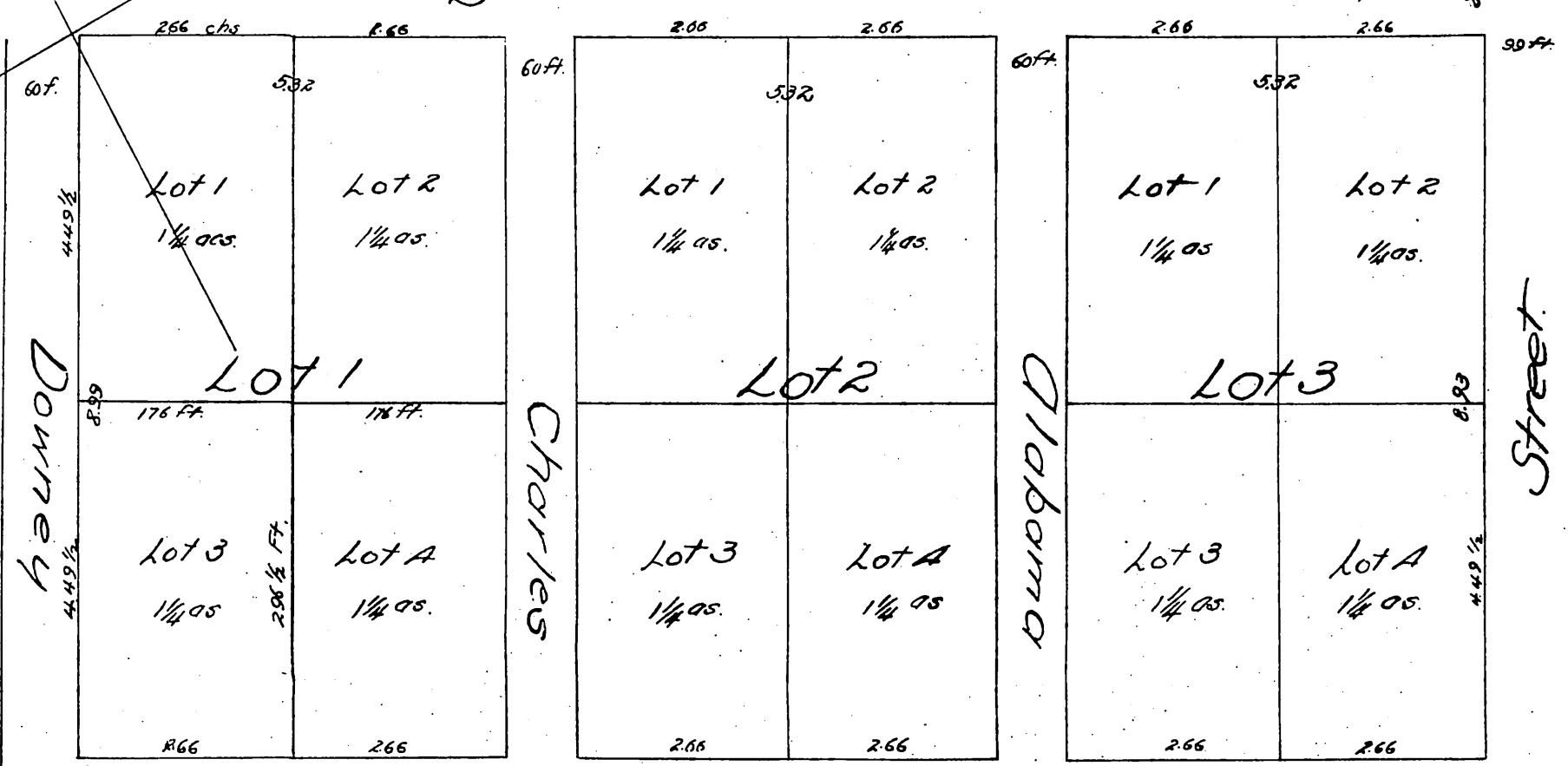
MAP
of a portion of
Bell's Addition
Los Angeles City California.

Land of Babcock.

Land of Judge Larrabee

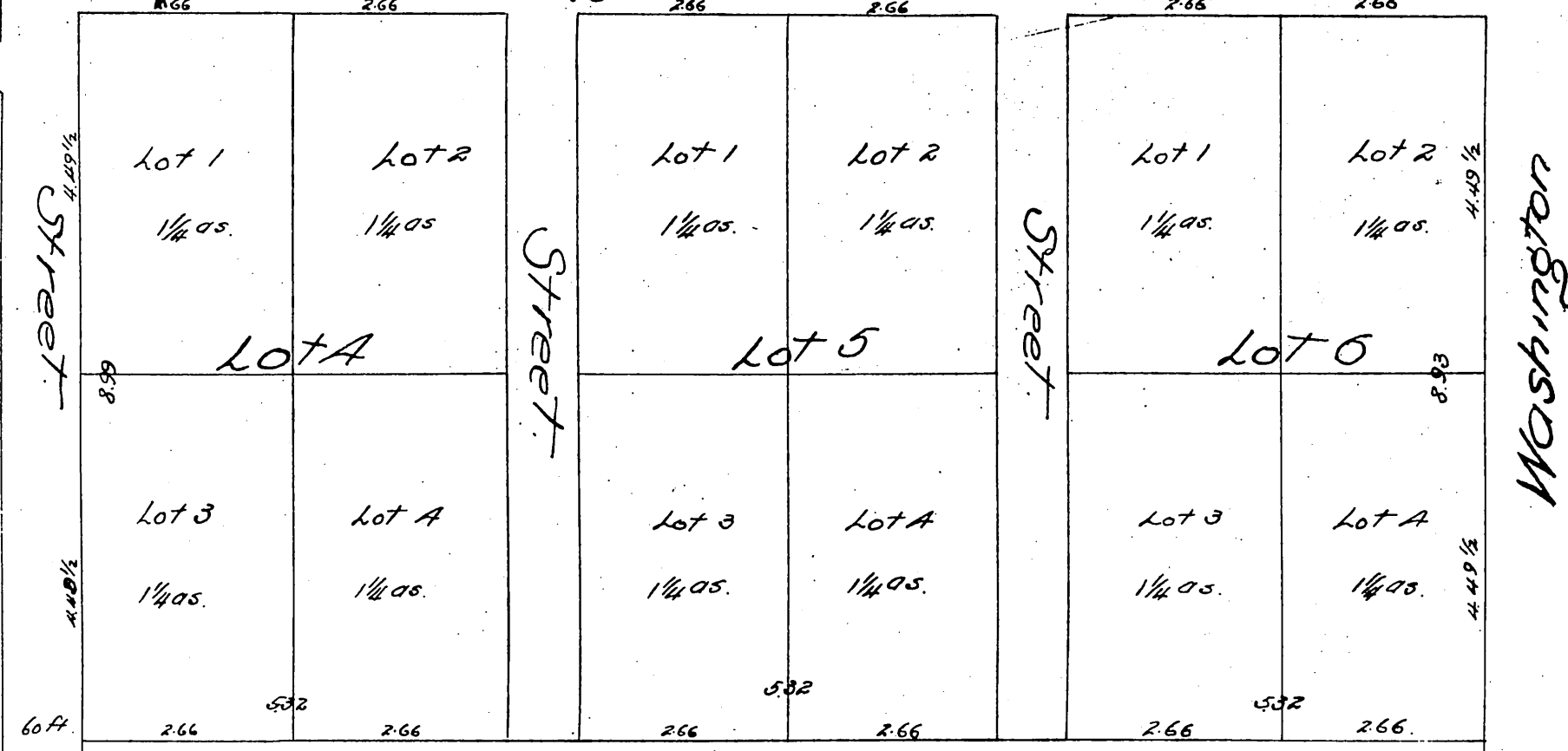
Figueroa

Street N. 27 1/4 E.



Georgia

Street



J. F. Burns 70 acs.

*A full true and correct copy of a portion of the plan of Bell's Addition,
recorded at request of E. Bouton Jan. 8th 1874 at 20 Min. past 10 A.M.
A. W. Pitts Recorder
by C. W. Gould. Deputy.*