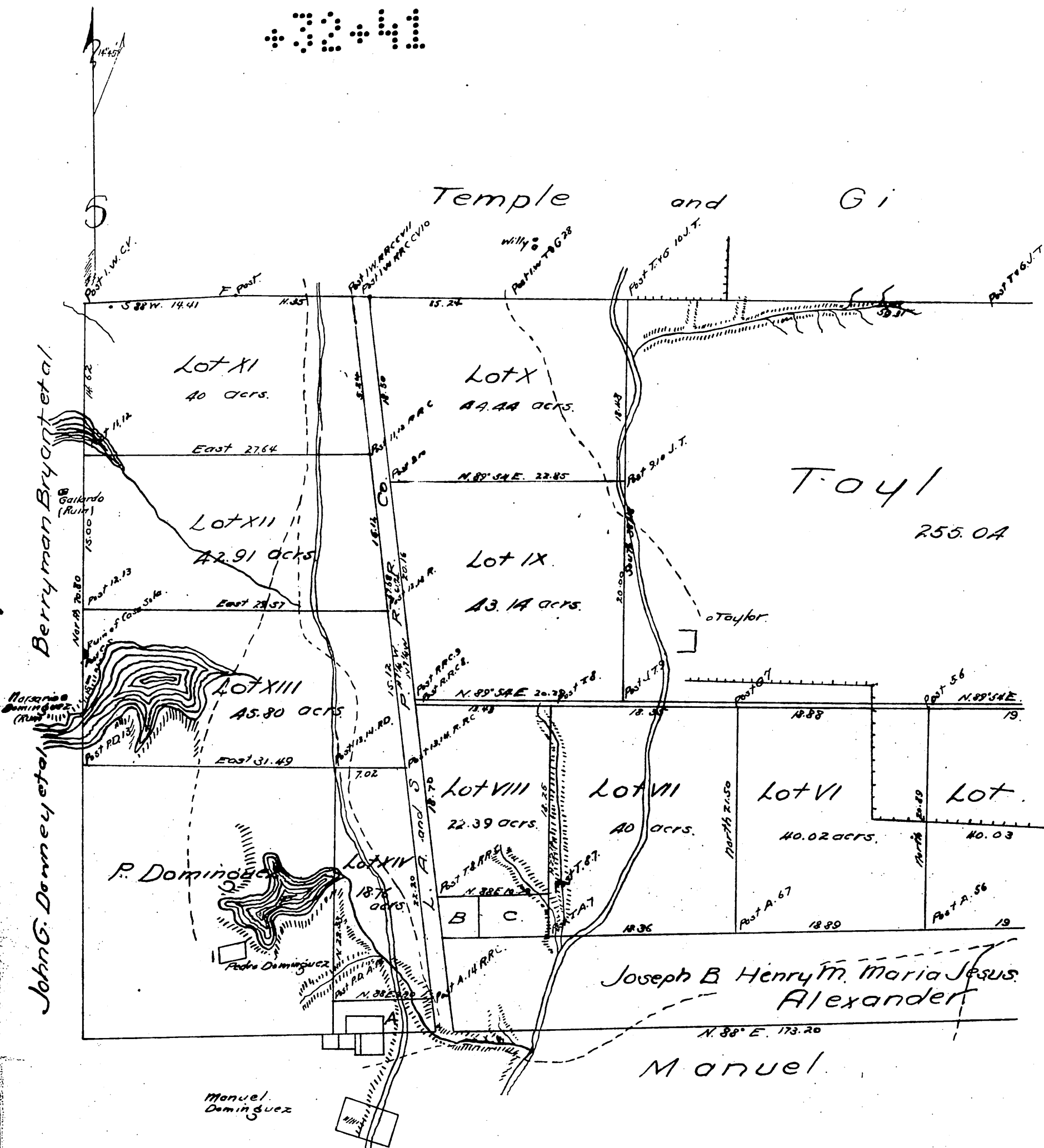


3041



MAP
of the

HELLMAN TRACT

San Pedro Ranch.

Los Angeles County California.

Surveyed and subdivided in January 1871 at request and
under instructions of I. W. Hellman Esq.

by Frank Lecourneur
C. Surveyor of Los Angeles County
Scale 10 chains pr. inch.

Variation 14° 45' E.