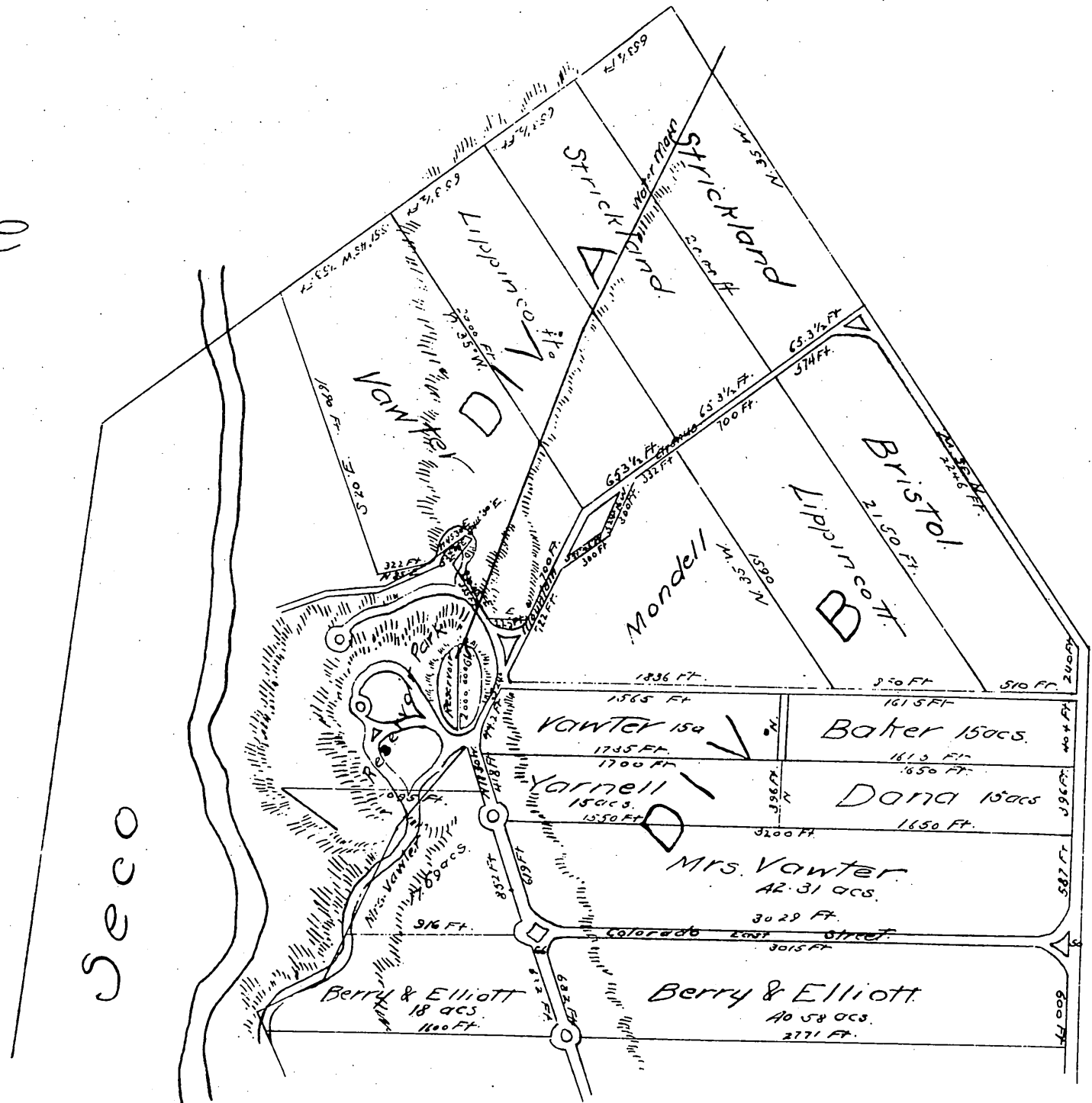
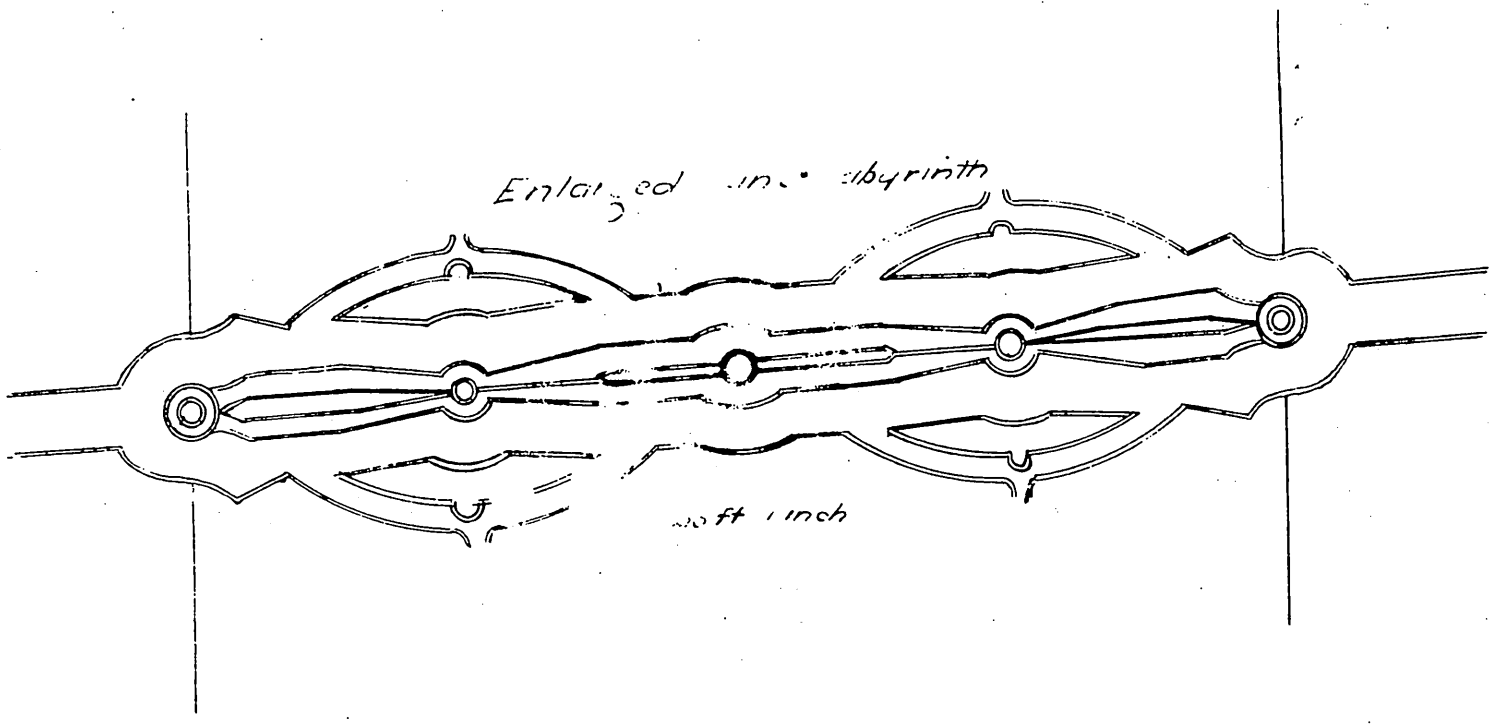
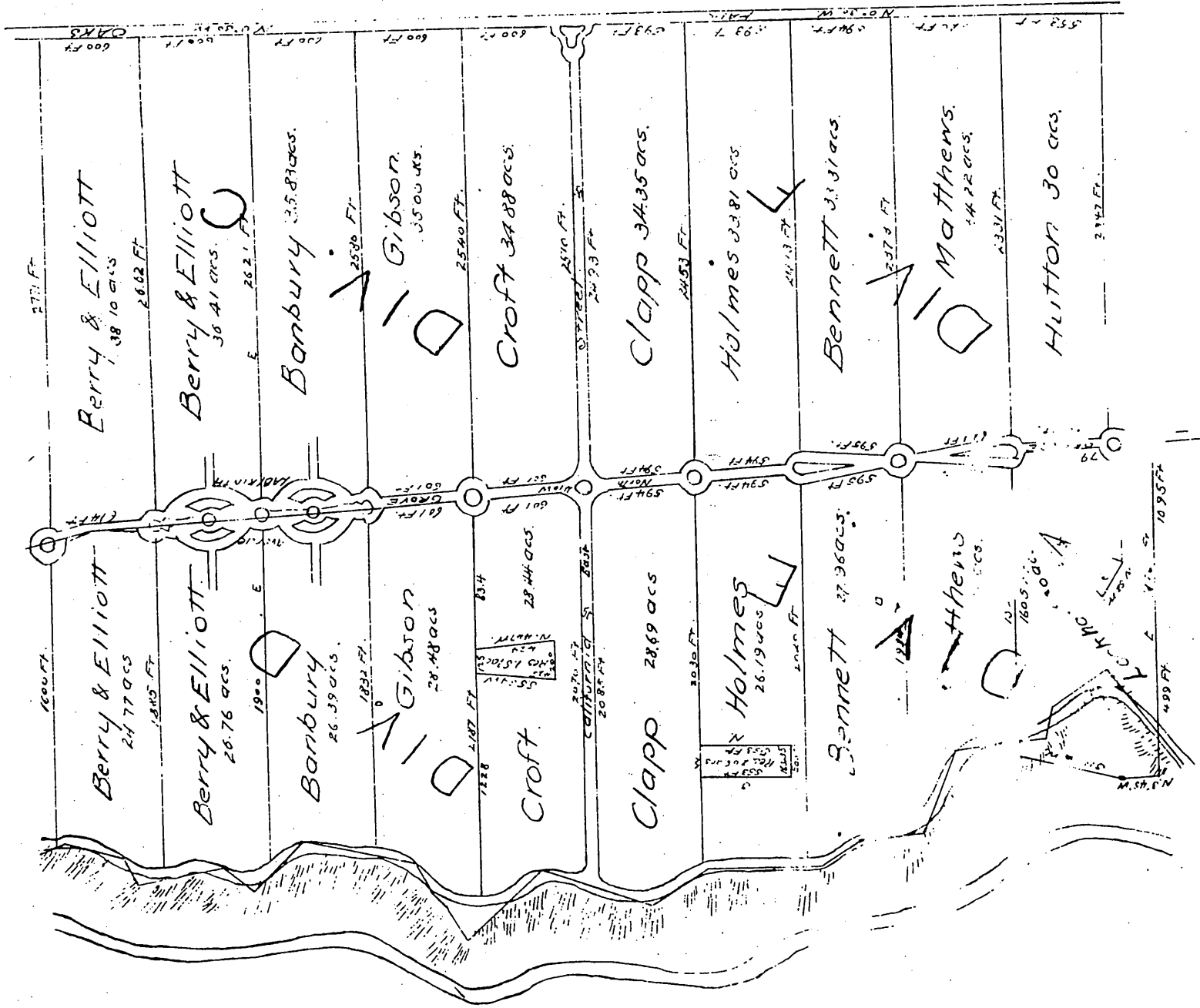
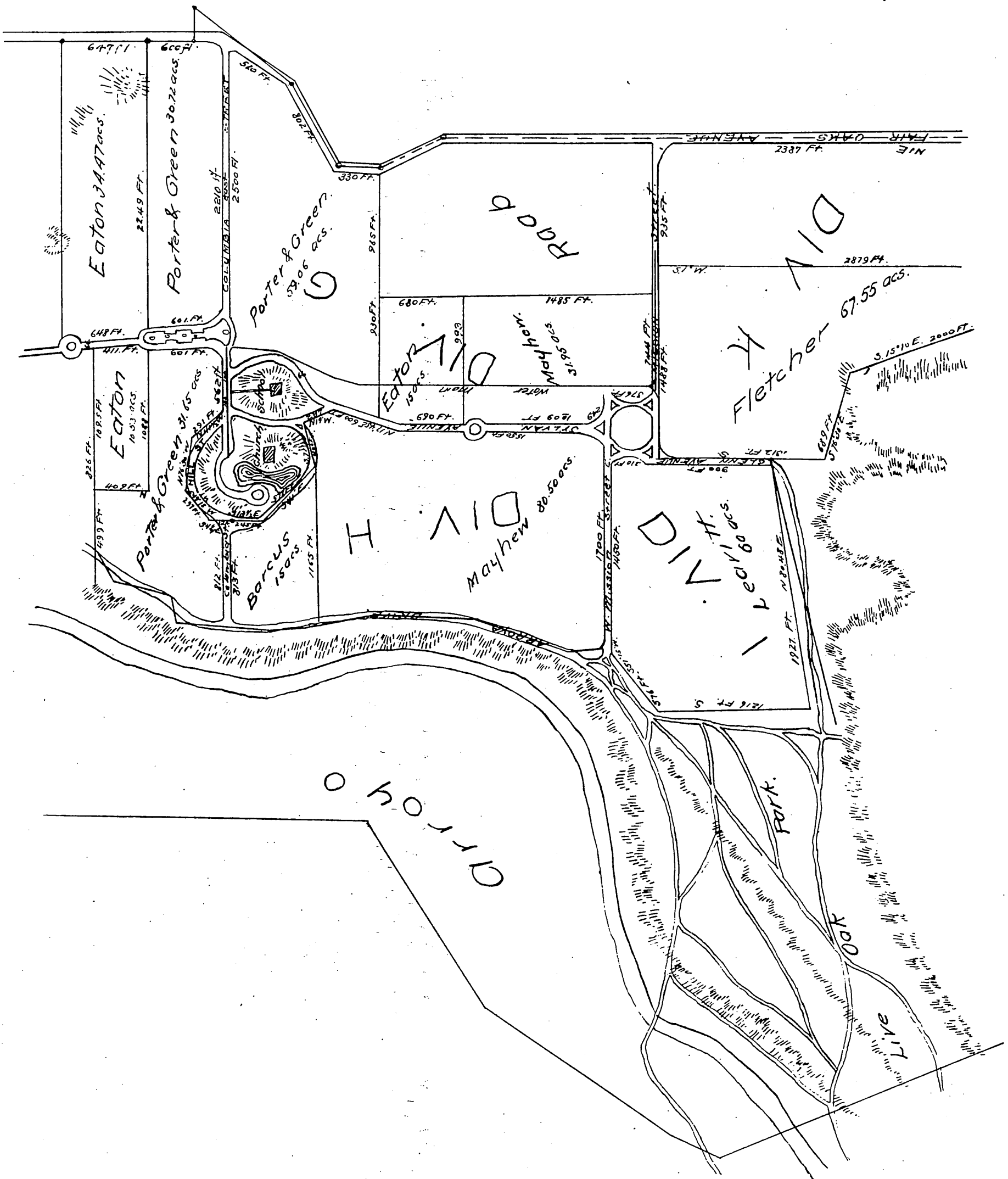
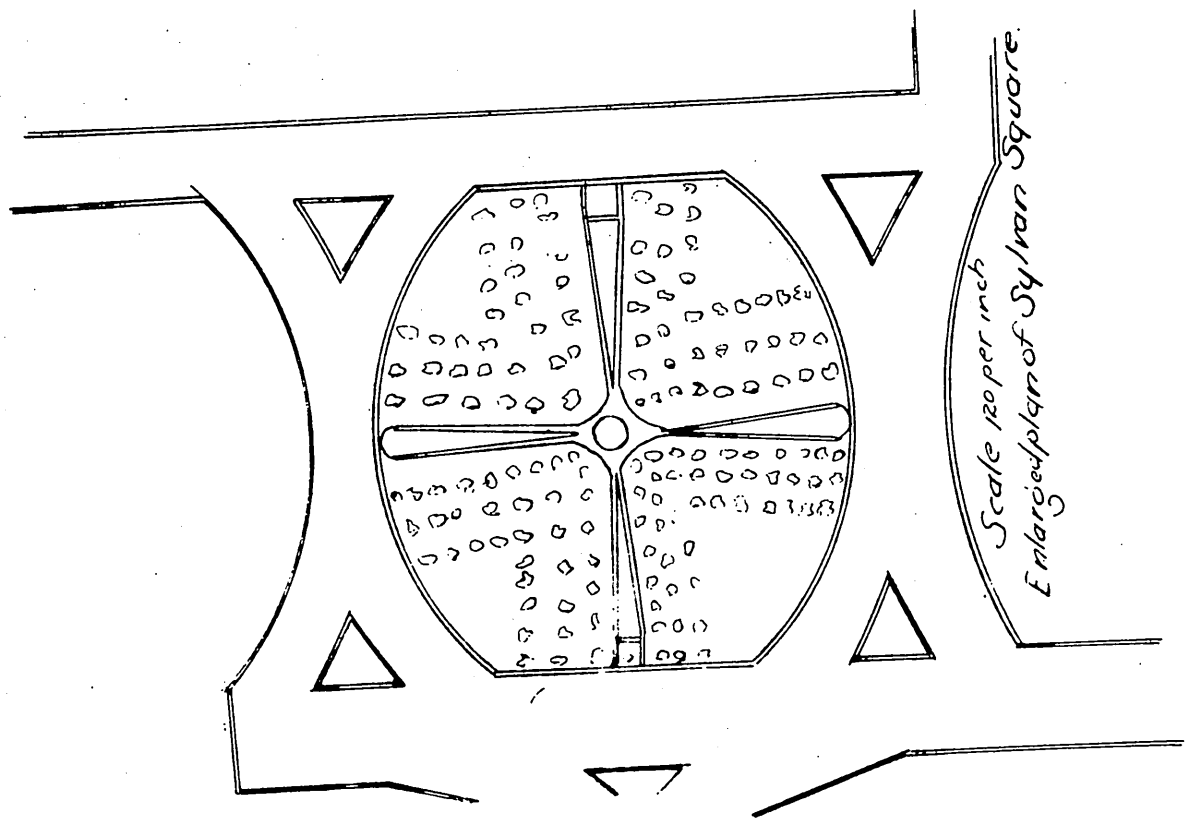
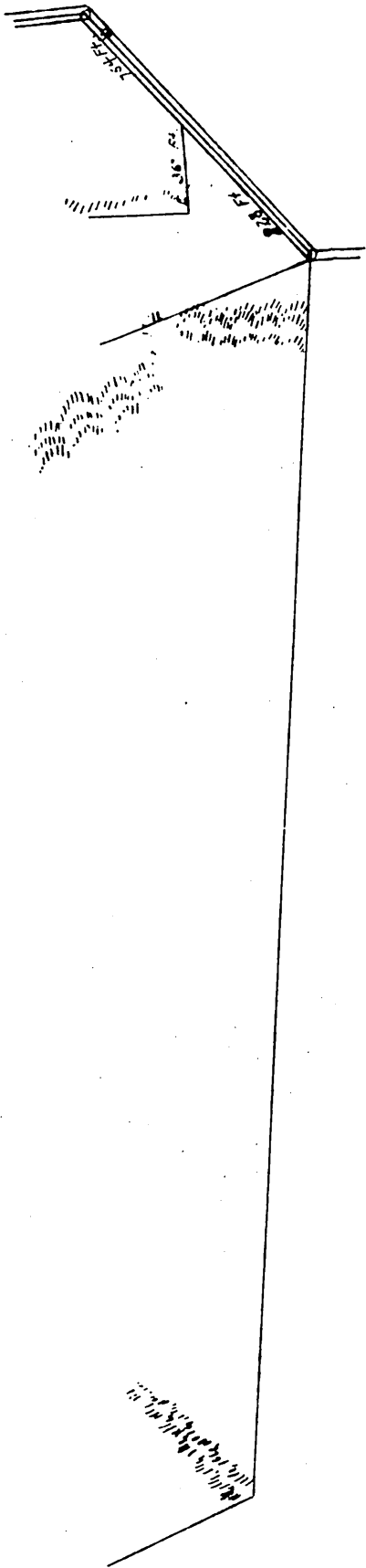


A
 MAP
 of
 San Gabriel Orange Grove
 ASSN'S LANDS.
 Los Angeles County
 1874.









I certify this page & the 3 pages next preceding it to be & contain a full true and correct copy (reduced to a one half scale of the original map of lands of the San Gabriel Orange Grove Association recorded June 25th 1872 at 5 Mins. past A. P. M. by request of D. M. Berry Secretary of said Association

J. W. Gillette County Recorder