



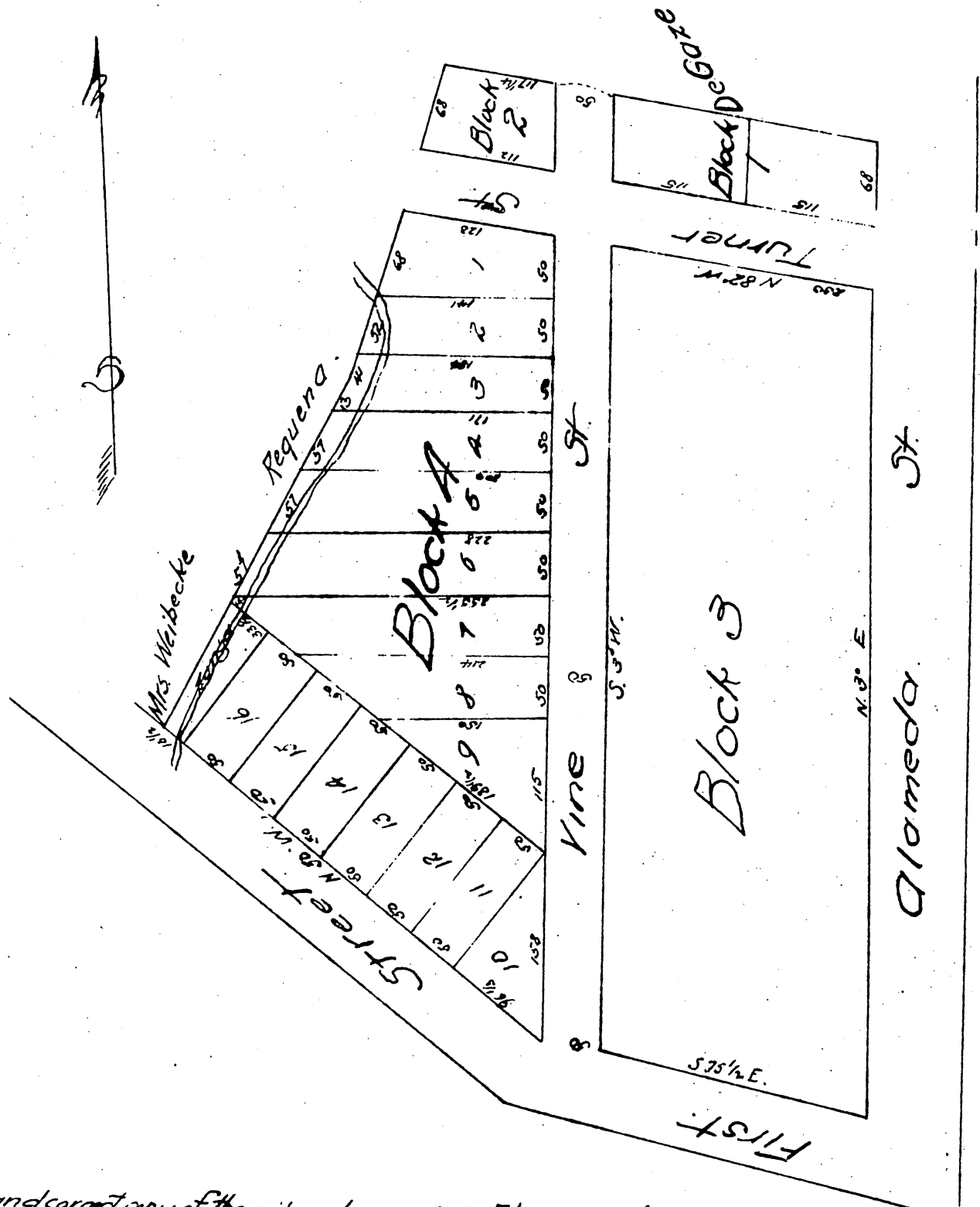
# MAP of the Subdivision OF THE

## Pryor Tract of land

Surveyed for Downey & Hellman January 22<sup>nd</sup> 1875  
by Moore & Kelleher Surveyors.

Scale one inch = 60 feet

(Reduced one half to conform to size of Book)



A full true and correct copy of the original recorded February 3<sup>rd</sup> 1875  
at 9<sup>30</sup> A.M. at request of I.W. Hellman.

J.W. Gillette County Recorder