

Diagram C shows the subdivision of Lots of Blocks 108 to 123 inclusive

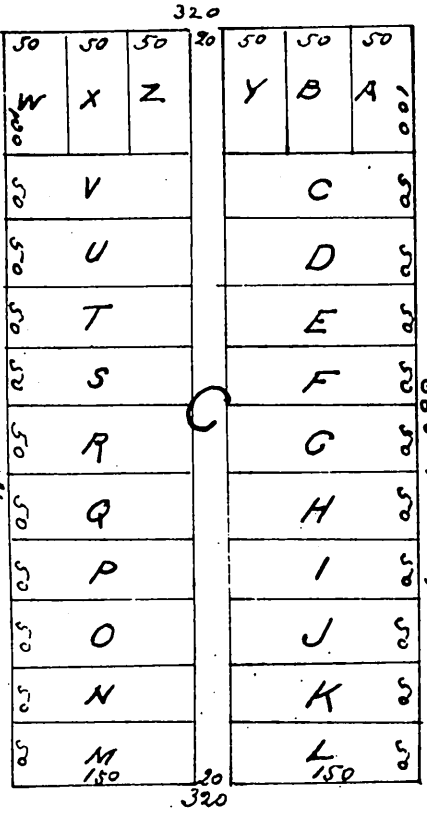
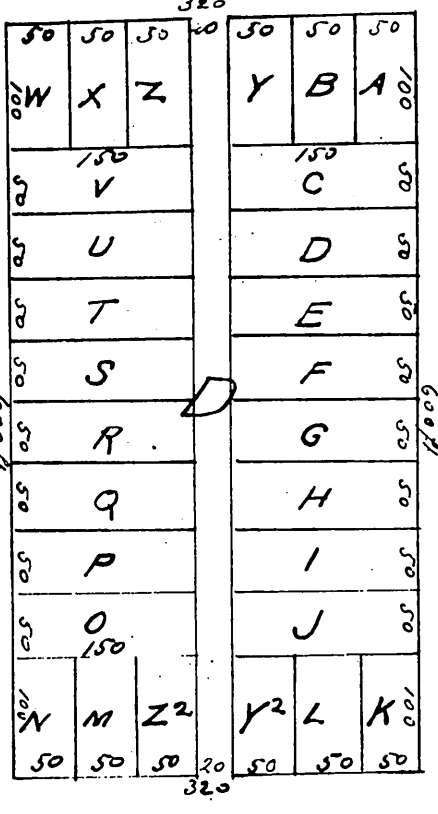


Diagram D shows the subdivision of Lots of Blocks 84 to 91 inclusive



A full true and correct copy of the original map recorded July 10<sup>th</sup> A.D. 1875 at 12 M ins past 11 o.m at request of J. S. Sharkey Secy of Los Angeles Independence Railroad Co  
 J. W. Gillette Recorder