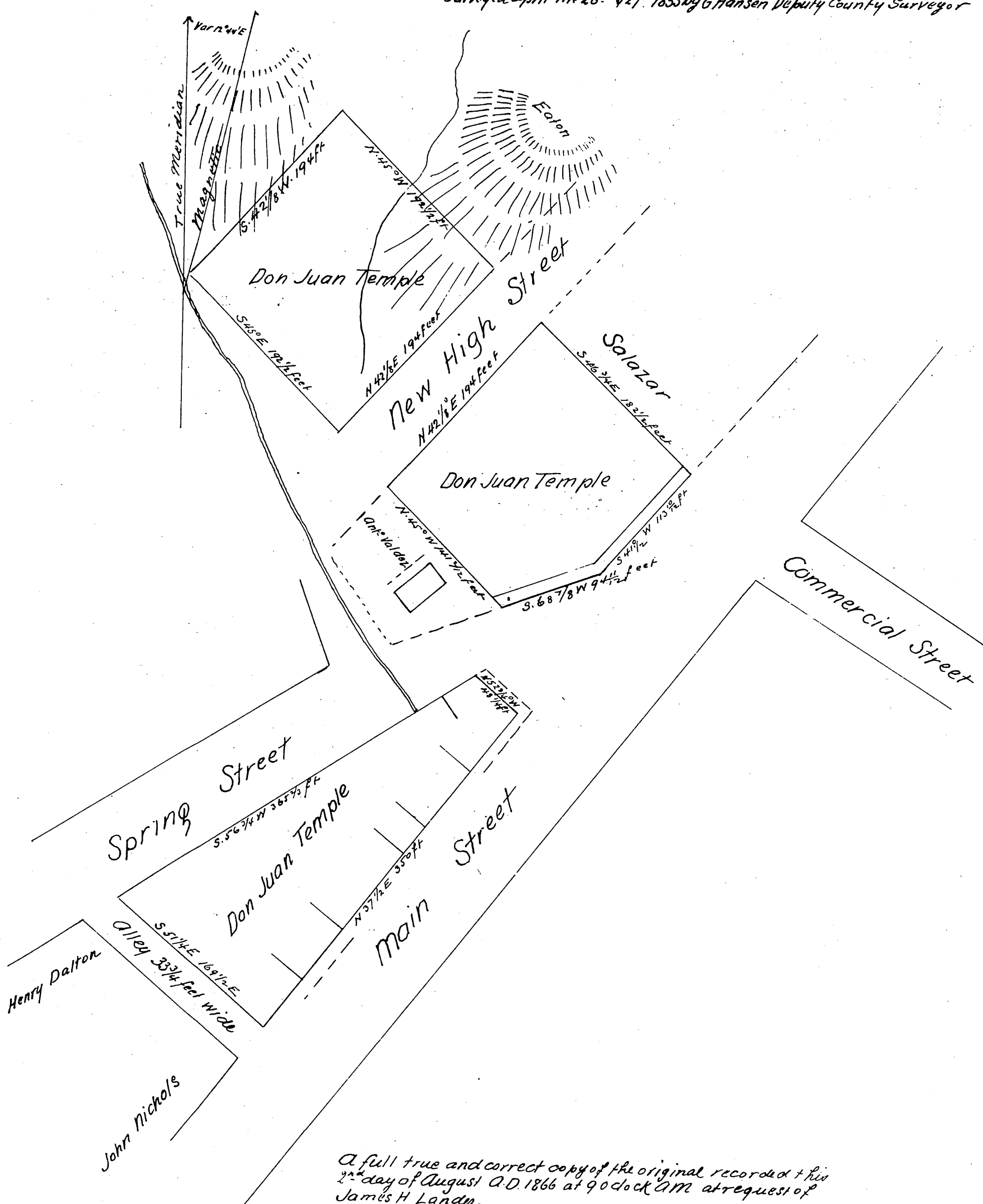


Plot  
of the house lots of  
Don Juan Temple  
near the junction of Main & Spring Streets  
Los Angeles City

Scale 80 feet to the inch

Surveyed April the 26<sup>th</sup> & 27<sup>th</sup> 1855 by G. Hansen Deputy County Surveyor



A full true and correct copy of the original recorded & his  
2<sup>nd</sup> day of August A.D. 1866 at 9 o'clock AM at request of  
James H Lander

T. D. Mott Co Recorder  
By S. H. Mott Deputy