

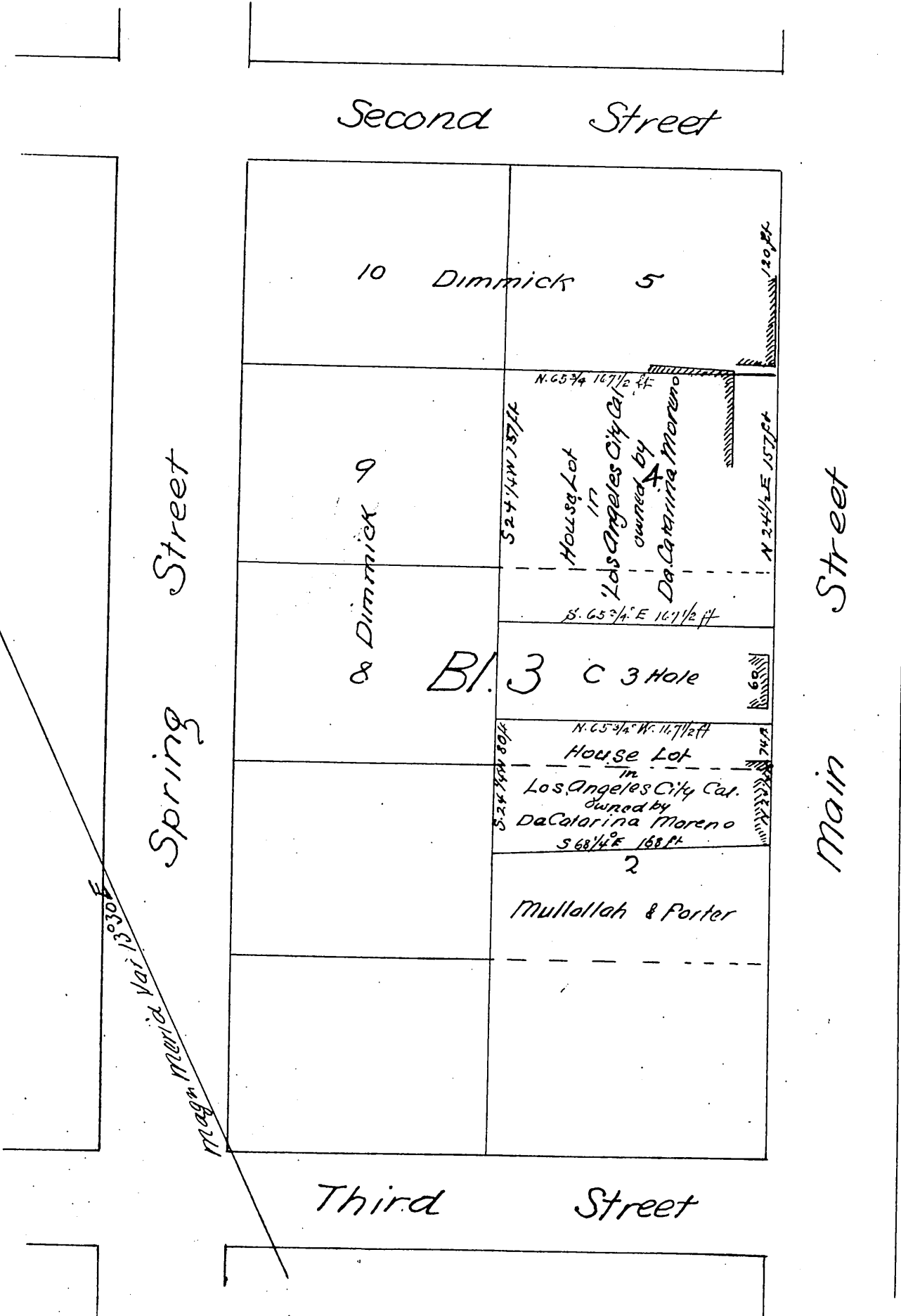


Scale of 80 feet to the inch
The courses are magnetic

I hereby certify this to be a correct map of a survey
executed by me on the 16th day of January A.D. 1857
Los Angeles City February 18th 1857
Adolphus F. Waldemar
Dep. Co. Surv. Los Angeles Co. Cal.

Seal

Map
of
Moreno
Property



A full, true and correct copy of the original
recorded this the 10th day of February A.D. 1868
at 12 hrs M at request of Andres Pico
T D Matt Recorder
By J. W. Gillette Deputy