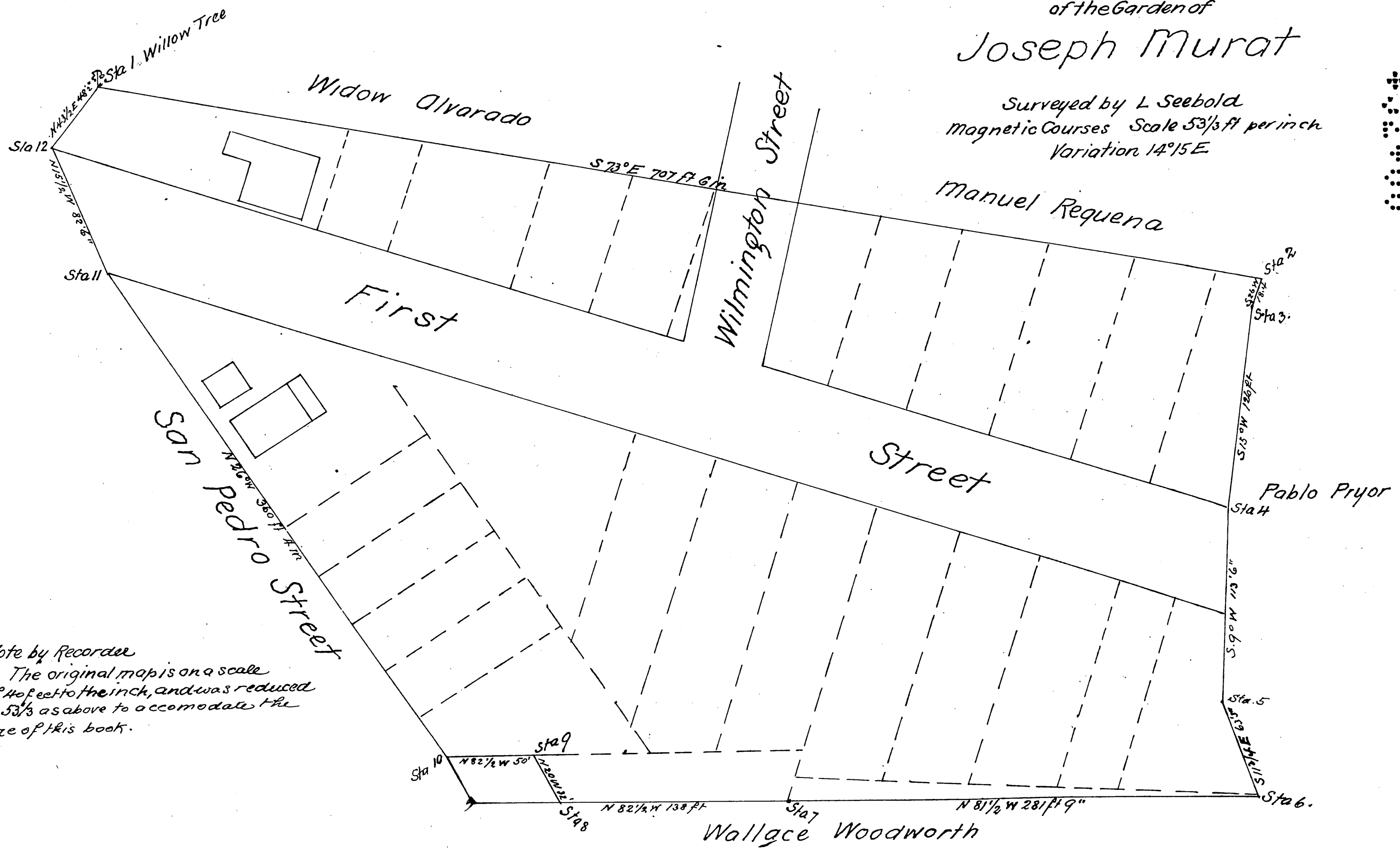
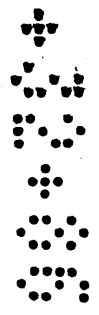


MAP of the Garden of Joseph Murat

Surveyed by L. Seebold
Magnetic Courses Scale $5\frac{2}{3}$ ft per inch
Variation $14^{\circ}15'E$



Note by Recorder
The original map is on a scale
of 40 feet to the inch, and was reduced
to $5\frac{2}{3}$ as above to accommodate the
size of this book.