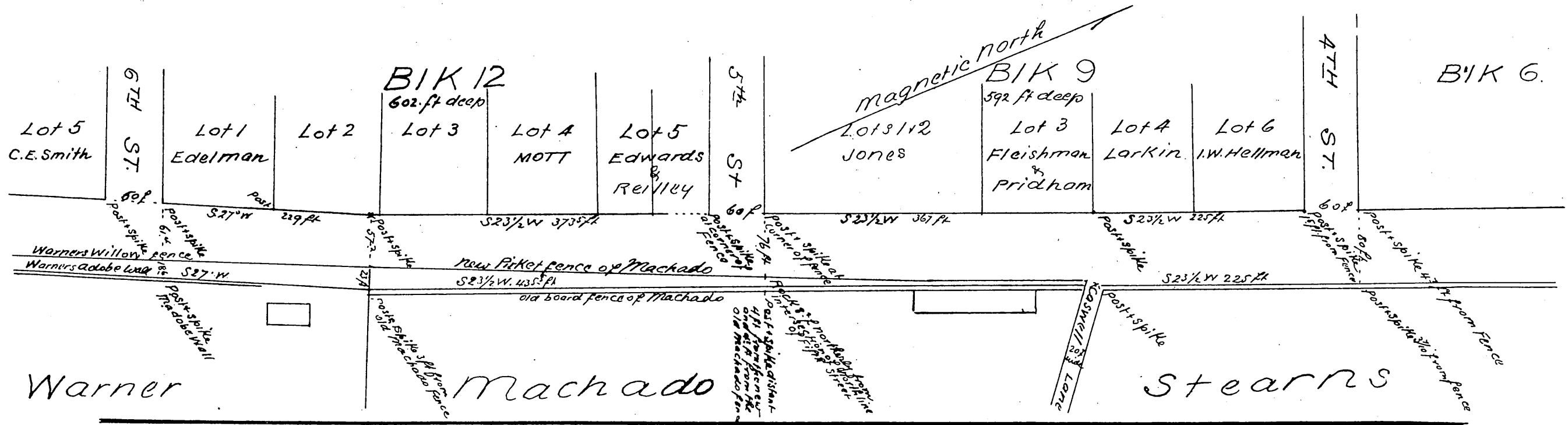


SEC 5



Plan of Main Street
Between Fourth and Washington Streets
Los Angeles City Cal^a

surveyed May 10th 1869 by Order of the Honorable Common Council
by
Frank Lecourneur
Surveyor

Scale of one hundred & twenty (120) feet to one inch
magnetic courses.

Note by County Recorder The original map is on a scale of sixty feet to the inch
and is here reduced as above to accommodate the size of this Book

A full, true and correct copy of the original
recorded this 23rd day of September, 1869
at request of Hon. Joel H. Turner Mayor
T.D. MOTT Recorder
By S.H. Mott Deputy