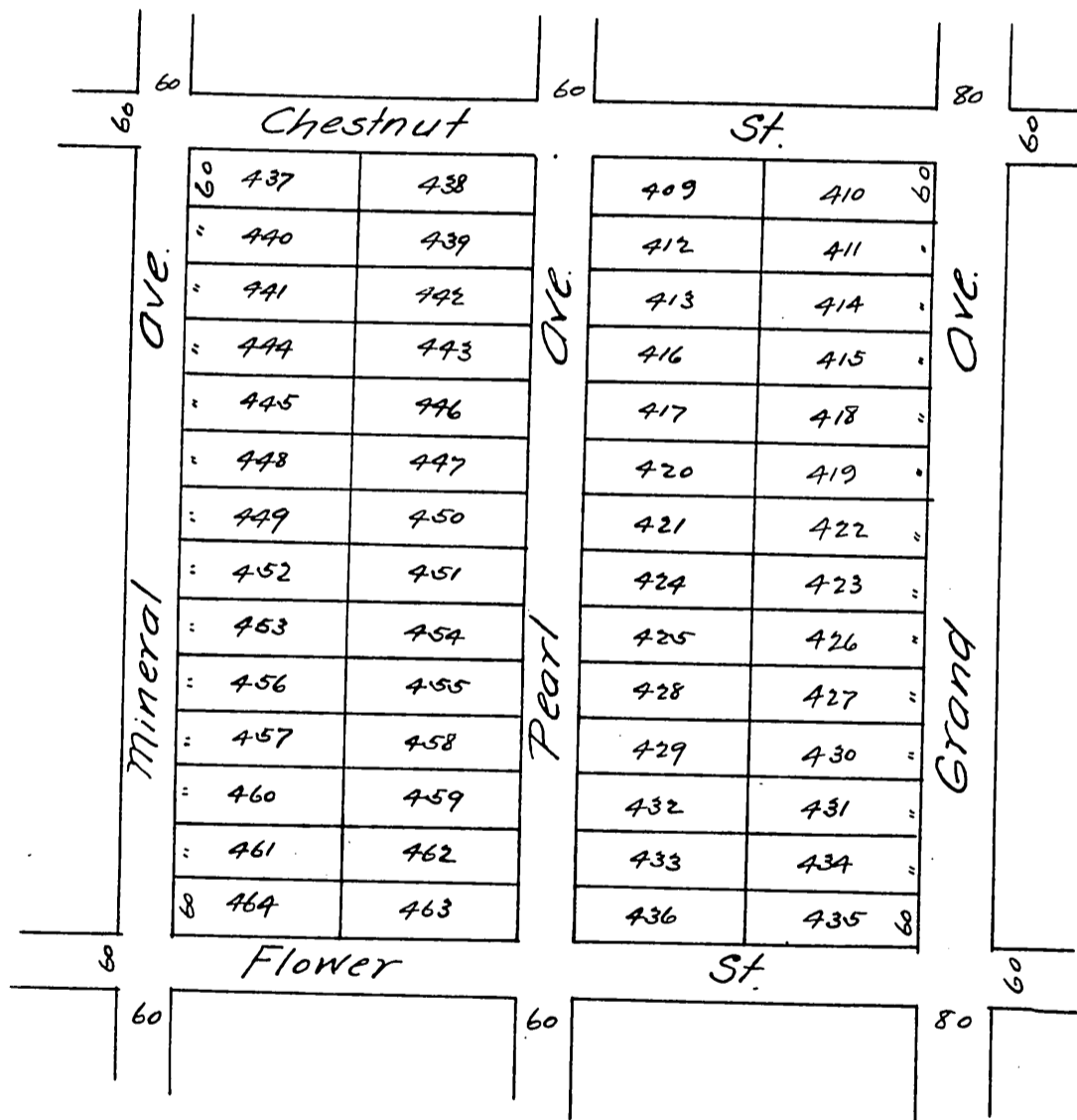


Suplimental
MAP
OF THE
Hyde Park Tract

being a plot of lots 409 to 464 both inclusive, being
2 blocks of said Hyde Park bounded on North by
Chestnut St on East by Grand Ave on the South
by Flower St and on the West by Mineral Ave

This map is made to correct errors in numbering in map
as shown on Book 14 page 21 miscellaneous Records



A full, true and correct copy of the original
(enlarged to the scale of 200 feet to one inch)
recorded August 2, 1888 at 33 min past 12 m
at request of M. L. Wicks.

Frank O. Gibson County Recorder.
By George Bungee Deputy.