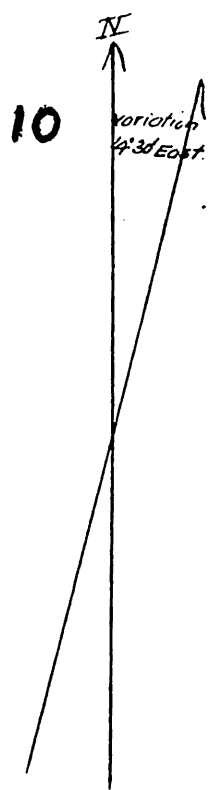


MAP

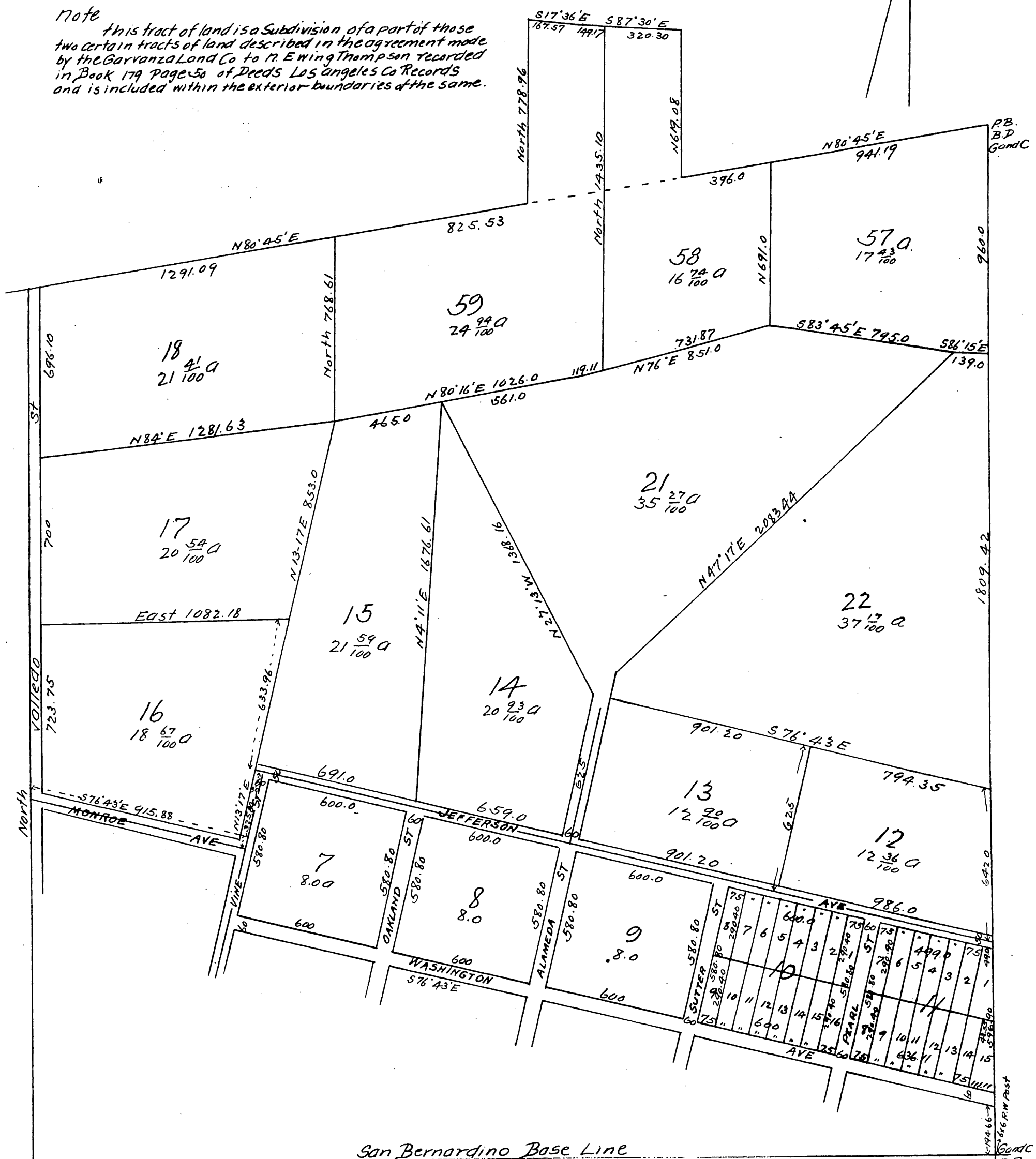
of the Northern Portion of the Montezuma Tract

The same being a portion of Thompson's Subdivision of
a part of the Glassell and Chapman portion of the
Rancho San Rafael Los Angeles Co Cal.

Surveyed by McClure Bras Feb. 1887.
Scale 300 ft per inch.



Note
This tract of land is a Subdivision of a part of those
two certain tracts of land described in the agreement made
by the Garvanza Land Co to M. Ewing Thompson recorded
in Book 179 Page 50 of Deeds Los Angeles Co Records
and is included within the exterior boundaries of the same.



San Bernardino Base Line

A full, true and correct copy of the original. Reduced to the scale of 400 feet to one inch.
Recorded August 4, 1888, at 22 min past 1. P.M. at request of E. B. Woodley.
Frank O. Gibson County Recorder.
By George Bugbee Deputy.

P.B.
B.D.
GaudC
1809.42
642.0
542.0
646. P.M. P.B.