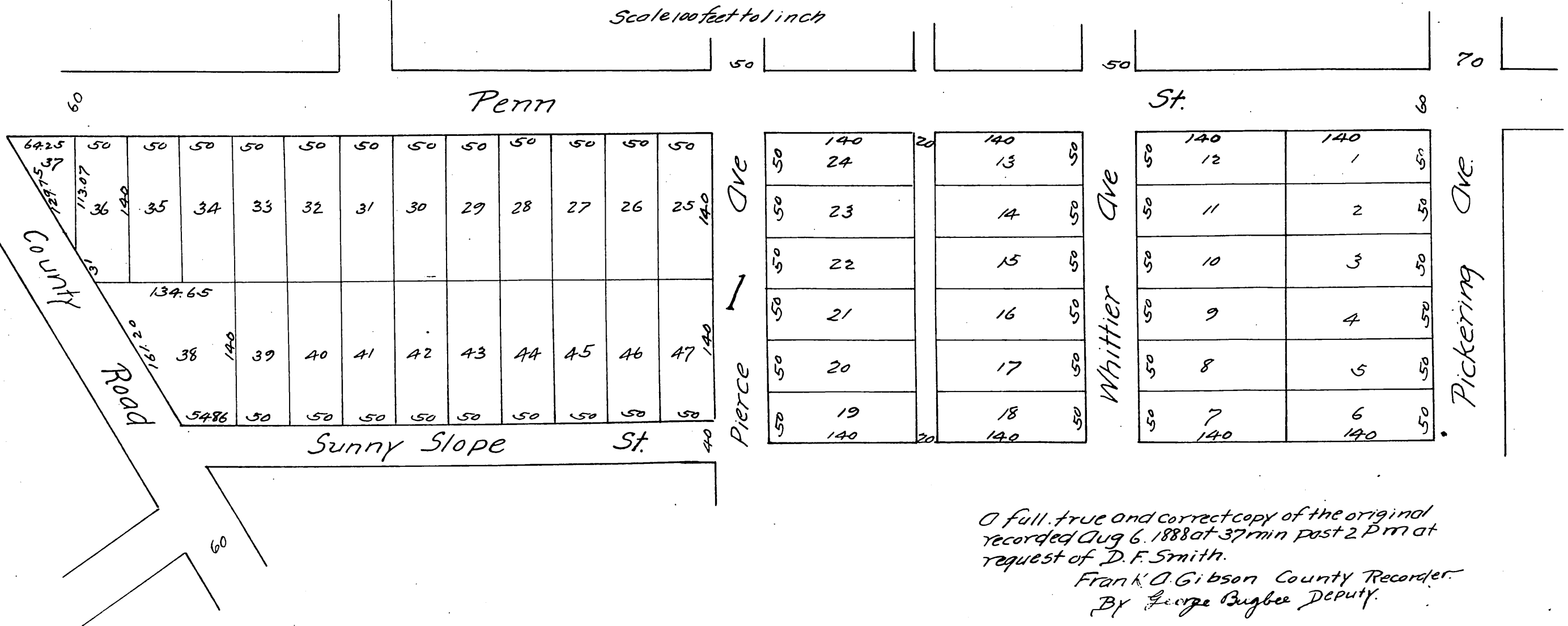


Smith's Addition to Whittier

Being a subdivision of Lot 1, Block L. of the Pickering Land
and Water Company's Subdivision of the John M. Thomas
Ranch Los Angeles County, Cal.

Surveyed Nov 1887 by Jessup Reece & Clappitt.
Surveyors

Scale 100 feet to 1 inch



A full, true and correct copy of the original
recorded Aug 6. 1888 at 37 min past 2 PM at
request of D. F. Smith.

Frank O. Gibson County Recorder.
By George Bugbee Deputy.

