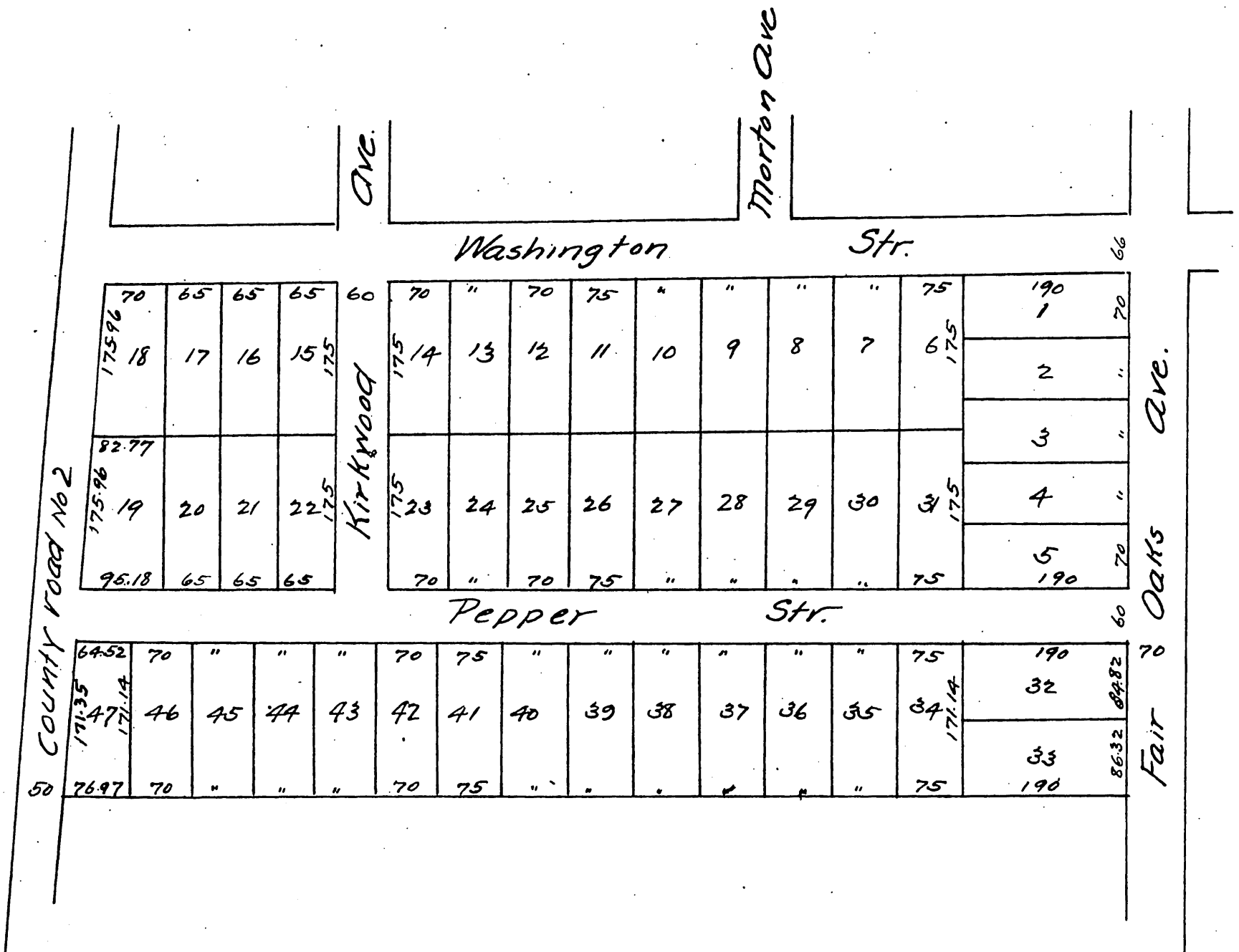


Amended
MAP
 of Block B of
A. J. Painter's Subdivision
 of the North portion of Block P of the
 subdivided lands of J. H. Painter and B. F. Ball.
 Pasadena, Cal.



A full, true and correct copy of the original,
 (reduced to the scale of 150 feet to one inch)
 recorded August 22, 1888 at 4 min past 11 a.m.
 at request of A. & T. I. Co.
 Frank A. Gibson, County Recorder.
 By George Bugbee, Deputy.