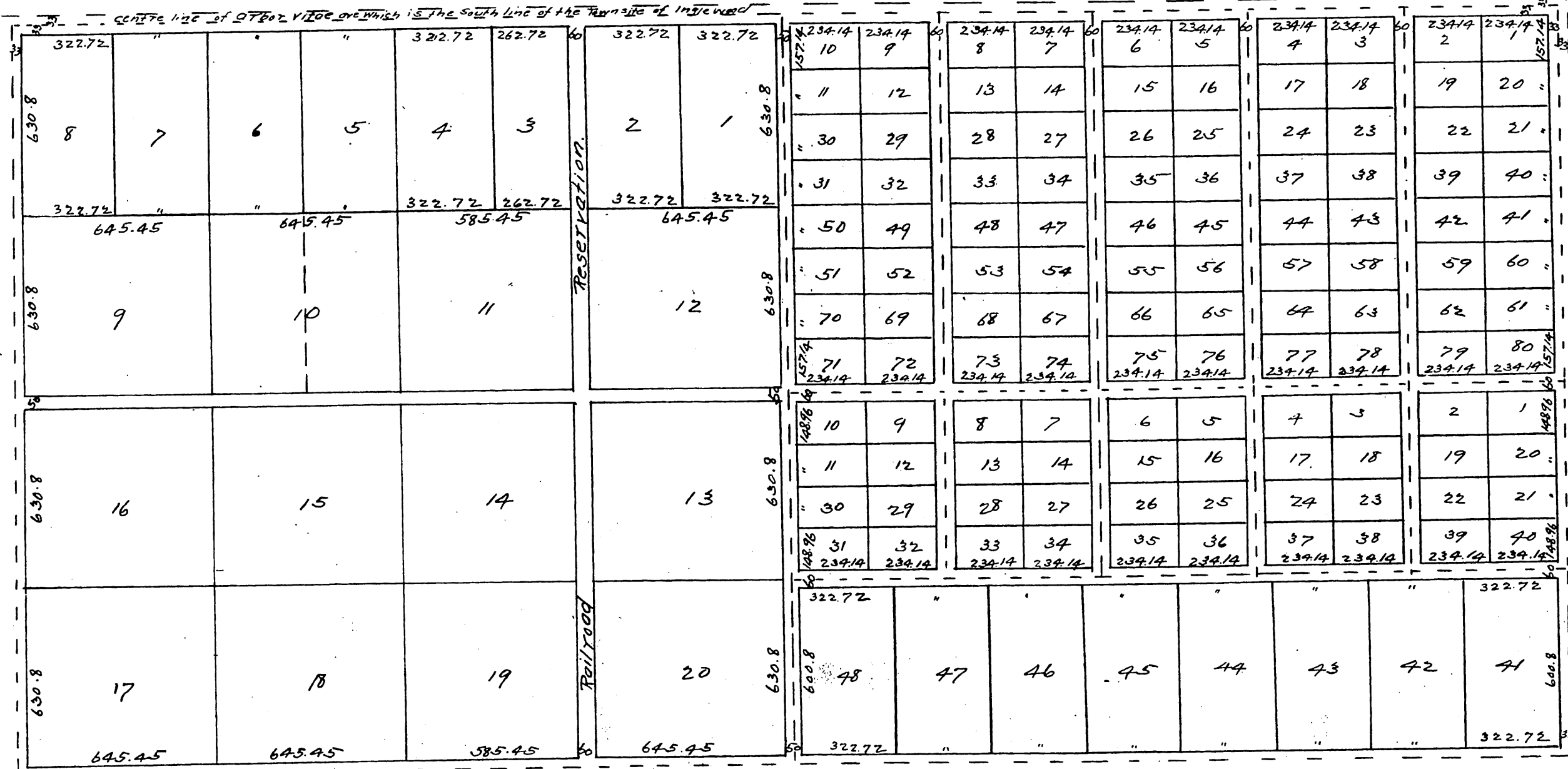


MAP
 OF
W. H. Hardy's Subdivision.
 Being the South half of Section 33, T. 2. S. R. 14 West S. B. M. in the
 Rancho Sausal Redondo
 Los Angeles County, Cal.

Scale 200 feet = 1 inch.

Block 360
of
Inglewood

N



S.E. cor of Inglewood Township

a full true and correct copy of the original.
 (reduced to the scale of 400 feet to one inch)
 Recorded August 24 1888 at 20 min past 8 a.m.
 at request of W. H. Hardy.
 Frank A. Gibson County Recorder.
 By George Bugbee Deputy.