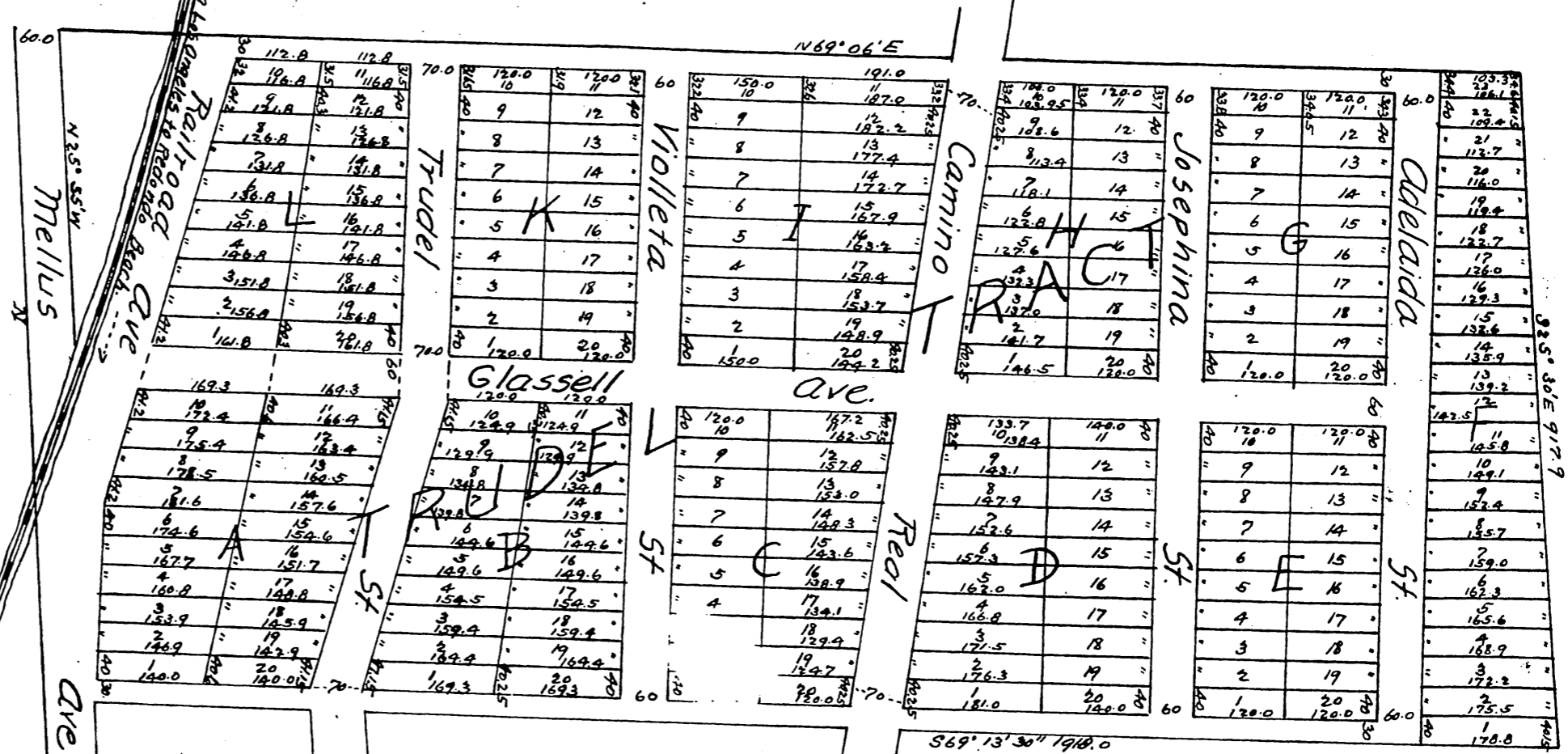


# MAP OF THE Trudel Tract situated at Redondo Beach L.A. Co Cal.

Surveyed by Riecker, Huber & Mensch July 1888

LAS SALINAS

Saltworks



A full, true and correct copy of the original  
(reduced to the scale of 200 feet to one inch)  
Recorded August 27, 1888 at 19 min past 1 P.M.  
at request of A.V. Trudel.  
Frank A. Gibson County Recorder.  
By George Bugher Deputy.

