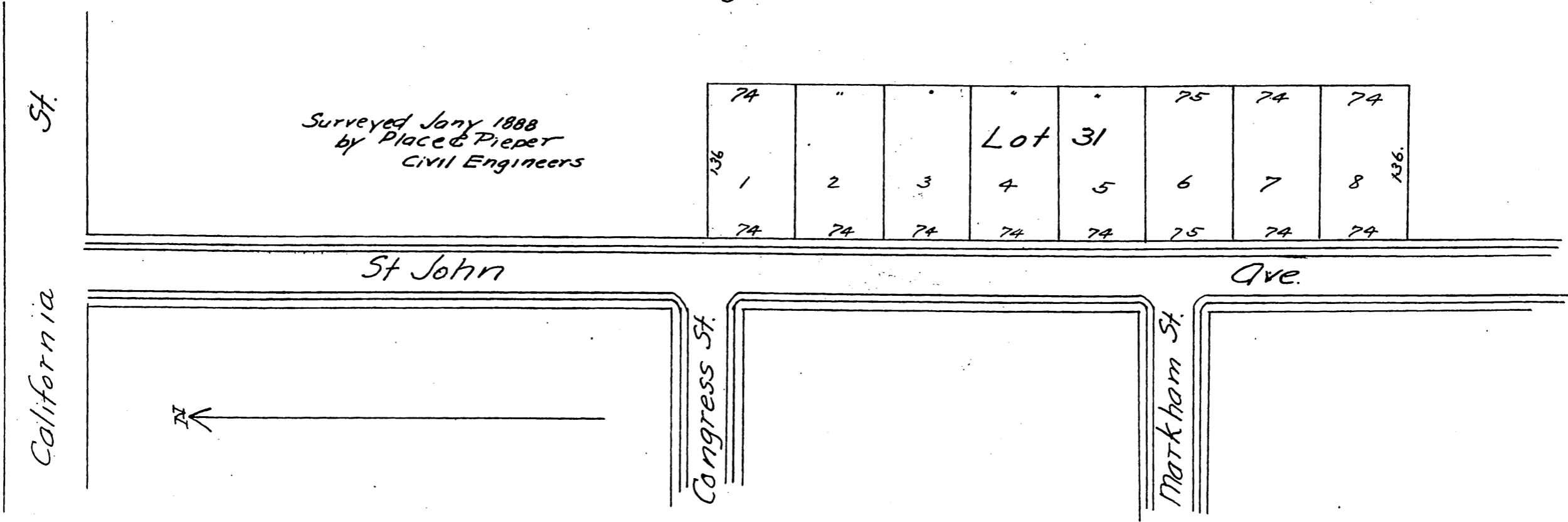




MAP
of subdivision of
Lot 31 Carlisle Heights

Being a part of the West 1509 acres of
lands marked "Holmes, of Division F,"
in the San Gabriel Orange Grove Ass-
ociations Subdivision of lands in the
Rancho San Pasqual
Pasadena Los Angeles Co Cal.



A full, true and correct copy of the original
(reduced to the scale of 100 feet to one inch)
recorded Sept 4 1888 at 7 min past 12 m.
at request of Geo W. Stimson
Frank A. Gibson, County Recorder
By George Bugbee Deputy.