

3449

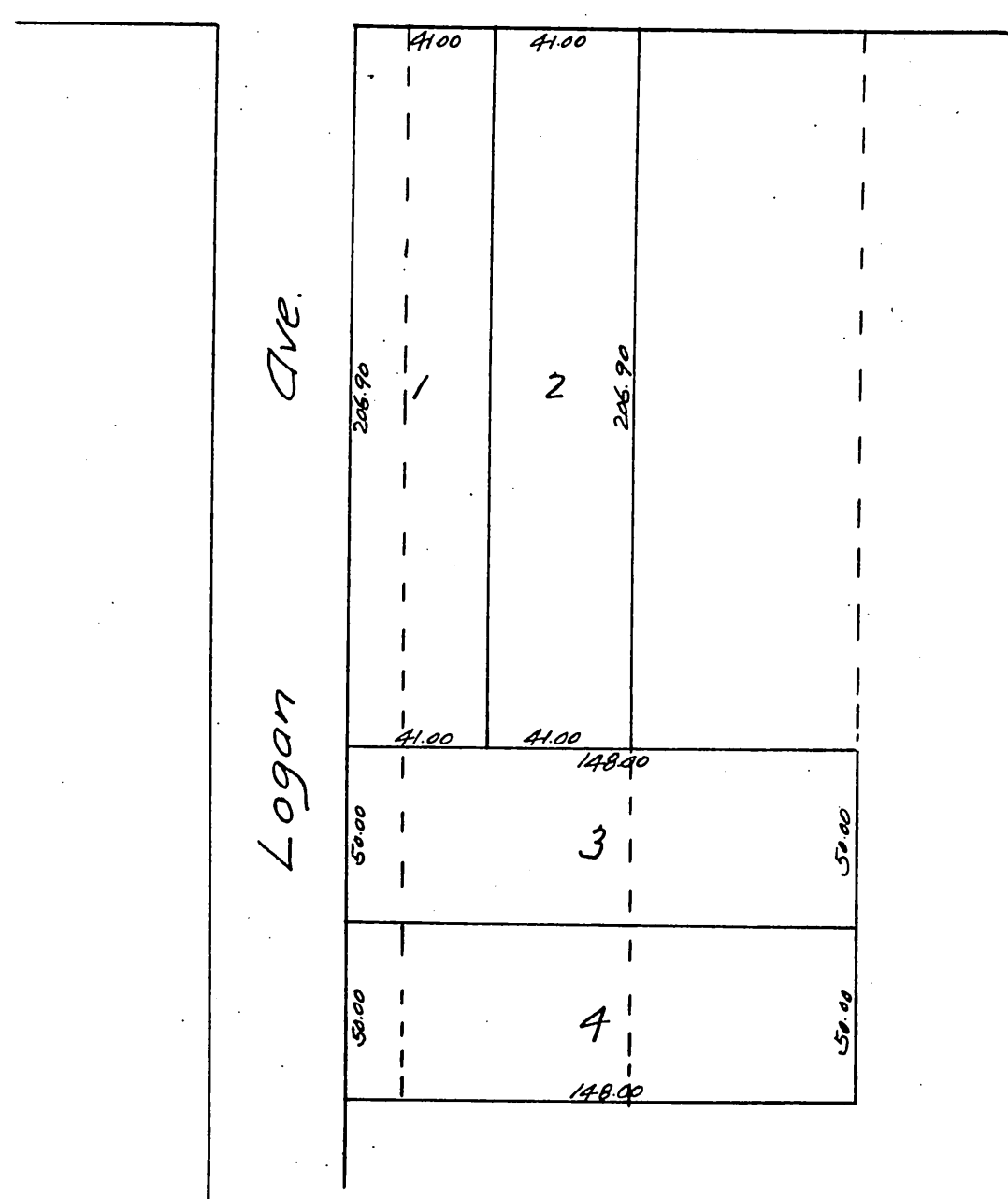
49

# MAP OF Tarble's Re-subdivision

of the South 100 feet of Lot 1 all of Lot 2  
and the East 16 feet of Lot 3 of Strohm's  
Subd of Lot 5 Freeman Tr and  
N<sup>1</sup>/<sub>2</sub> of Tr marked J.P. Crosthwaite.  
L.A. Co Cal.

Surveyed Aug 1888 by E.G. Jones  
Scale 50' = 1"

Washington St.



A full, true and correct copy of the original  
recorded Sept 5, 1888 at 15 min past 9 a. m  
at request of M. F. Tarble.

Frank A. Gibson County Recorder  
By George Bugbee Deputy