

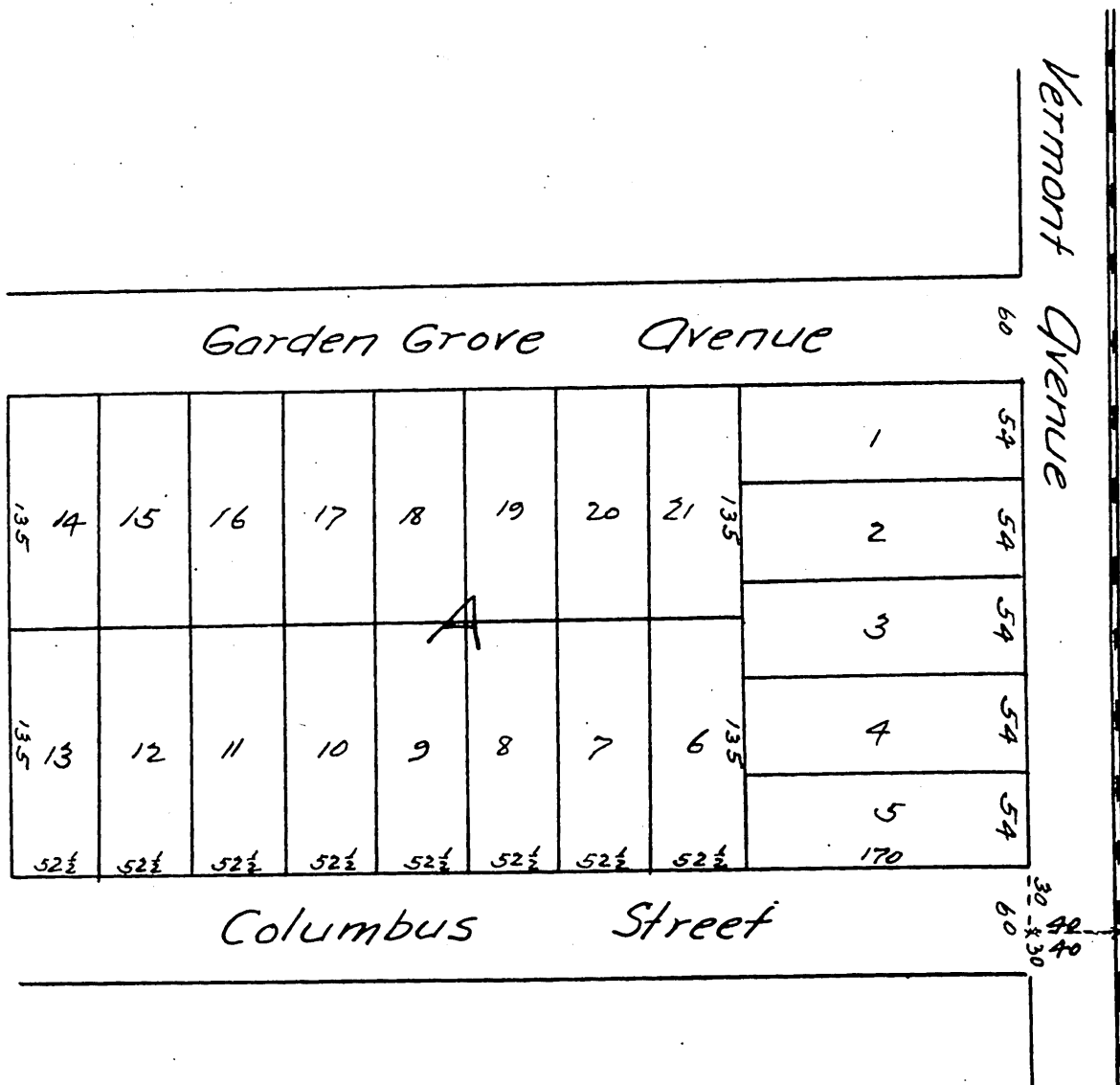
3457

15

GARDEN GROVE TRACT.

S.E. corner of Section 12. T. 25. R. 14. W. 5. B. 17.

Surveyed by G. E. Jones C.E.



A full, true and correct copy of the original
 recorded Sept 6, 1888 at 43 min past 3 P.M.
 at request of Leonard Schlegel.
 Frank A. Gibson, County Recorder.
 By George Bugbe Deputy