

TOWN

55

OF

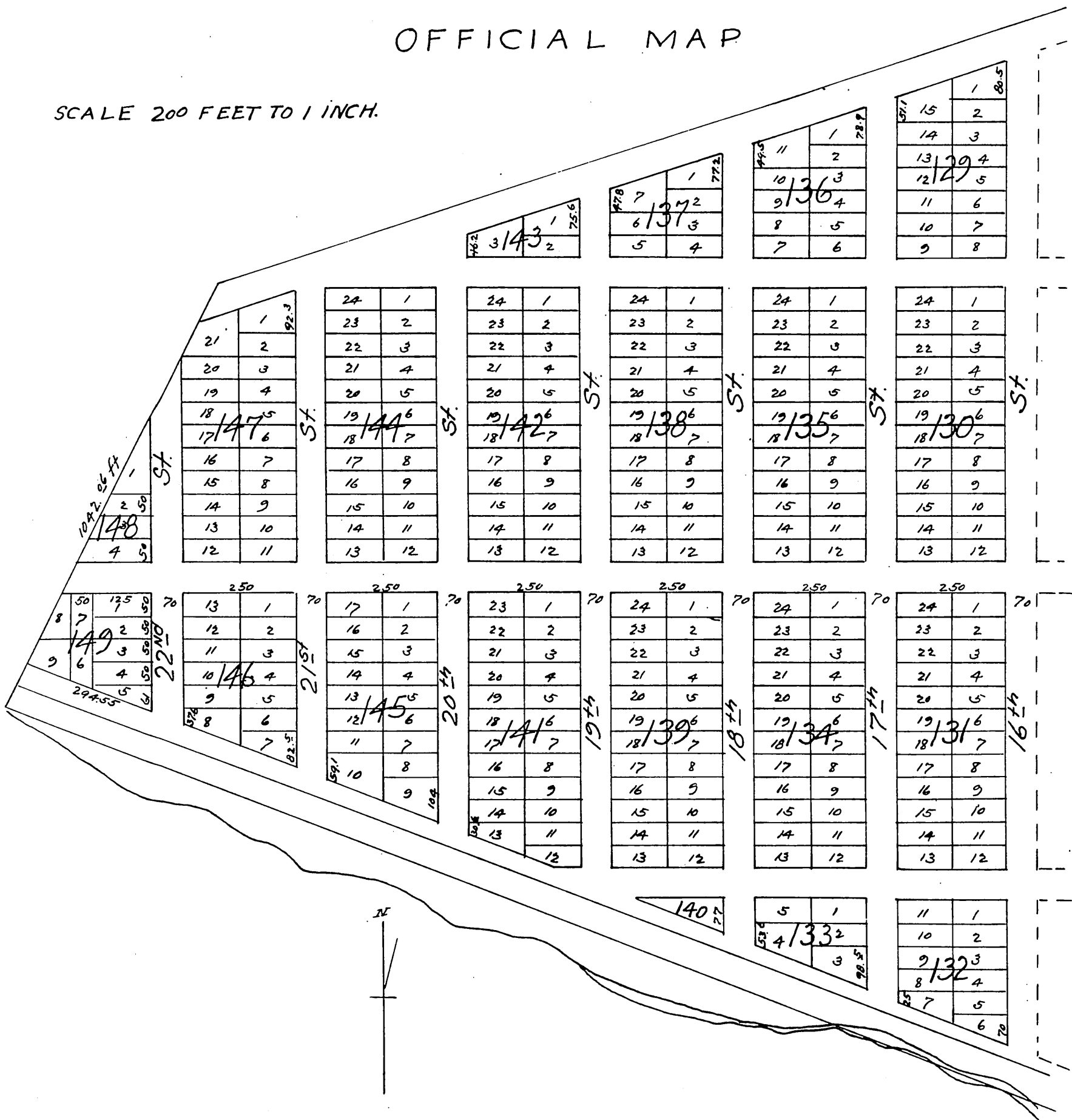
# SAN PEDRO HARBOR

PROPERTY OF THE  
SAN PEDRO HARBOR, DOCK AND LAND ASSOCIATION,

AND THE  
SOUTHERN PACIFIC R.R. RESERVATION

## OFFICIAL MAP

SCALE 200 FEET TO 1 INCH.

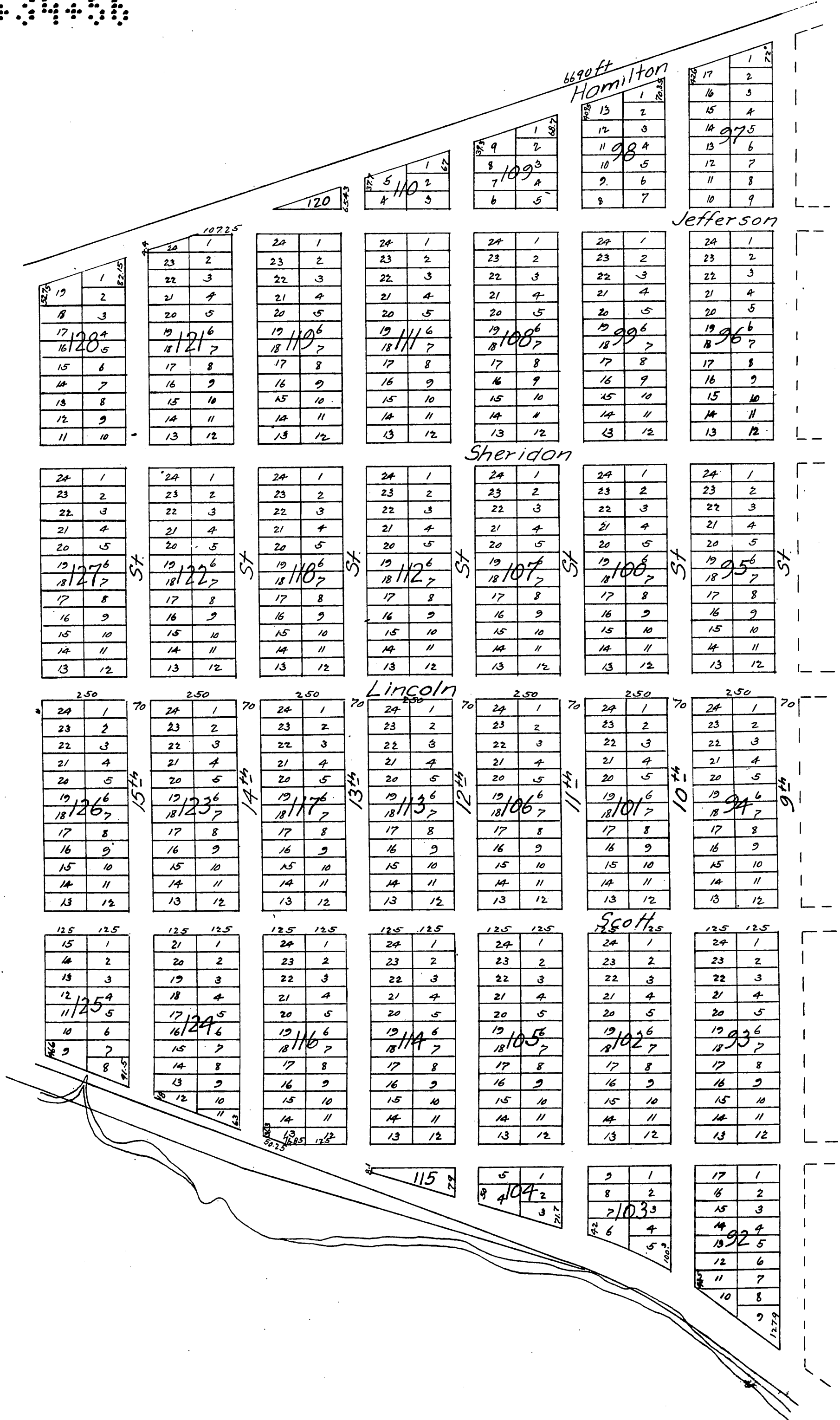
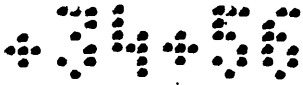


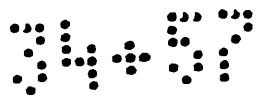
Notice is hereby and upon the face of this map given to all whom it may now or hereafter concern in anyway whatever that the San Pedro Harbor, Dock and Land Association the owner of the property subdivided upon this map, does hereby and forever reserve to itself and for its own exclusive use and benefit all the right to lay water, gas and other conducting pipes of every name nature and kind therein as also the exclusive right to furnish water and light for all future uses of the occupants of said property. Also the exclusive right, franchise and privilege to construct, maintain and operate railroads and telegraph, lines of every name, nature and kind through and along the streets of said property, notwithstanding any sales of any portions of said property hereafter made by said corporation. Said association also reserves to itself the exclusive right to sell and supply ballast and water to all vessels at San Pedro Harbor.

This notice shall not be taken to apply to or modify in any manner whatever the deed made this day to the Southern Pacific Railroad Extension Company

April 23<sup>d</sup> 1888

San Pedro Harbor, Dock and Land Association  
by order of Board of Trustees.





Avenue

21	1
20	2
19	3
18	4
17	5
16	6
15	7
14	8
13	9
12	10
11	11

24	1
23	2
22	3
21	4
20	5
19	6
18	7
17	8
16	9
15	10
14	11
13	12

Clay

24	1
23	2
22	3
21	4
20	5
19	6
18	7
17	8
16	9
15	10
14	11
13	12

24	1
23	2
22	3
21	4
20	5
19	6
18	7
17	8
16	9
15	10
14	11
13	12

24	1
23	2
22	3
21	4
20	5
19	6
18	7
17	8
16	9
15	10
14	11
13	12

13	1
12	2
11	3
10	4
9	5
8	6
7	7

24	1
23	2
22	3
21	4
20	5
19	6
18	7
17	8
16	9
15	10
14	11
13	12

24	1
23	2
22	3
21	4
20	5
19	6
18	7
17	8
16	9
15	10
14	11
13	12

24	1
23	2
22	3
21	4
20	5
19	6
18	7
17	8
16	9
15	10
14	11
13	12

24	1
23	2
22	3
21	4
20	5
19	6
18	7
17	8
16	9
15	10
14	11
13	12

24	1
23	2
22	3
21	4
20	5
19	6
18	7
17	8
16	9
15	10
14	11
13	12

24	1
23	2
22	3
21	4
20	5
19	6
18	7
17	8
16	9
15	10
14	11
13	12

24	1
23	2
22	3
21	4
20	5
19	6
18	7
17	8
16	9
15	10
14	11
13	12

24	1
23	2
22	3
21	4
20	5
19	6
18	7
17	8
16	9
15	10
14	11
13	12

24	1
23	2
22	3
21	4
20	5
19	6
18	7
17	8
16	9
15	10
14	11
13	12

24	1
23	2
22	3
21	4
20	5
19	6
18	7
17	8
16	9
15	10
14	11
13	12

24	1
23	2
22	3
21	4
20	5
19	6
18	7
17	8
16	9
15	10
14	11
13	12

24	1
23	2
22	3
21	4
20	5
19	6
18	7
17	8
16	9
15	10
14	11
13	12

24	1
23	2
22	3
21	4
20	5
19	6
18	7
17	8
16	9
15	10
14	11
13	12

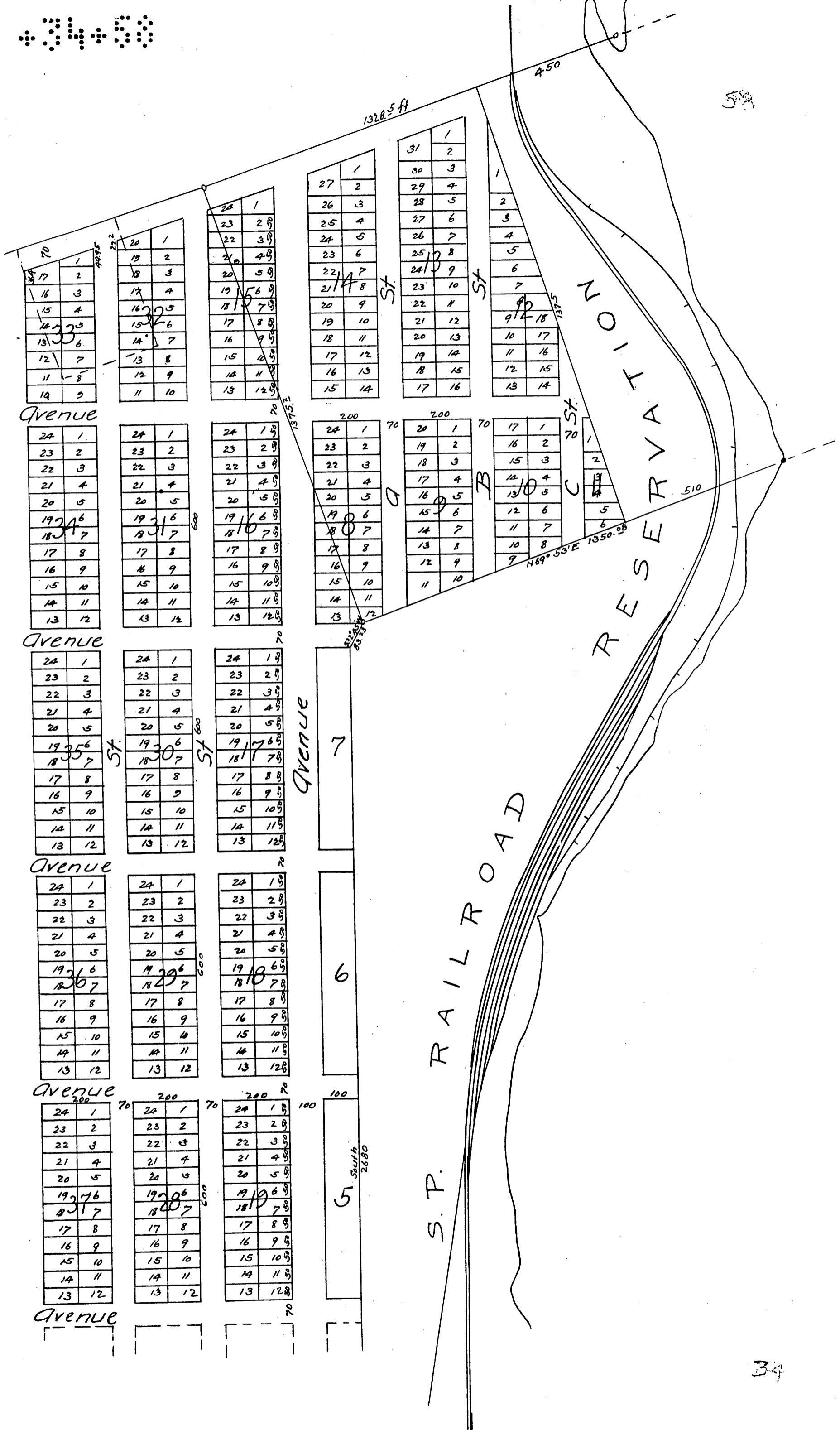
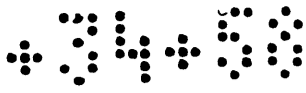
24	1
23	2
22	3
21	4
20	5
19	6
18	7
17	8
16	9
15	10
14	11
13	12

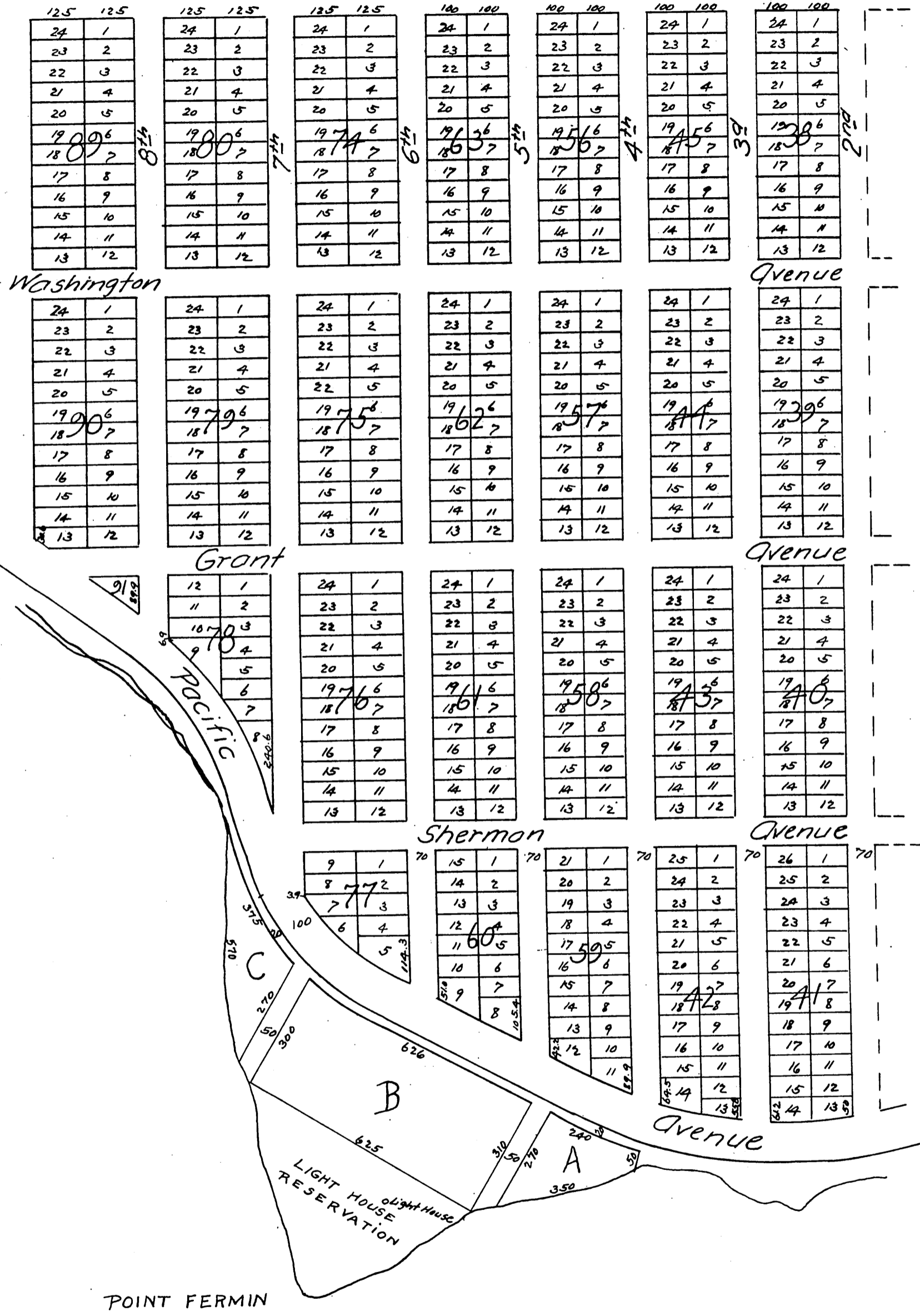
24	1
23	2
22	3
21	4
20	5
19	6
18	7
17	8
16	9
15	10
14	11
13	12

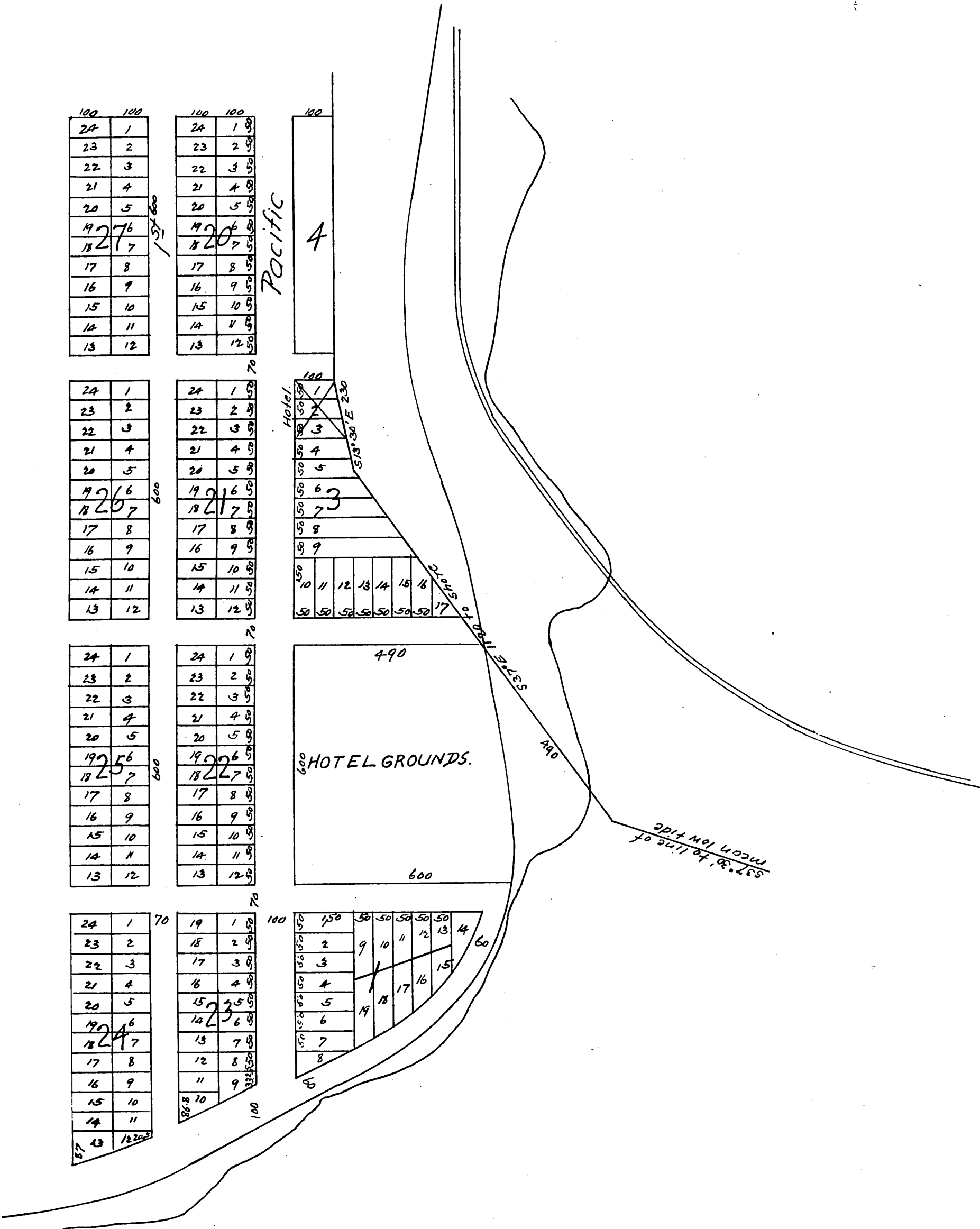
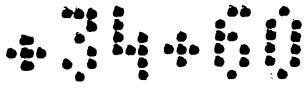
24	1
23	2
22	3
21	4
20	5
19	6
18	7
17	8
16	9
15	10
14	11
13	12

24	1
23	2
22	3
21	4
20	5
19	6
18	7
17	8
16	9
15	10
14	11
13	12

24	1
23	2
22	3
21	4
20	5
19	6
18	7
17	8
16	9
15	10
14	11
13	12







24	1
23	2
22	3
21	4
20	5
19	6
18	7
17	8
16	9
15	10
14	11
13	12

24	1
23	2
22	3
21	4
20	5
19	6
18	7
17	8
16	9
15	10
14	11
13	12

24	1
23	2
22	3
21	4
20	5
19	6
18	7
17	8
16	9
15	10
14	11
13	12

24	1
23	2
22	3
21	4
20	5
19	6
18	7
17	8
16	9
15	10
14	11
13	12

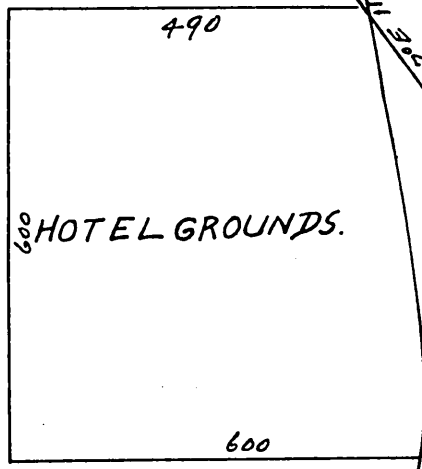
24	1
23	2
22	3
21	4
20	5
19	6
18	7
17	8
16	9
15	10
14	11
13	12

24	1
23	2
22	3
21	4
20	5
19	6
18	7
17	8
16	9
15	10
14	11
13	12

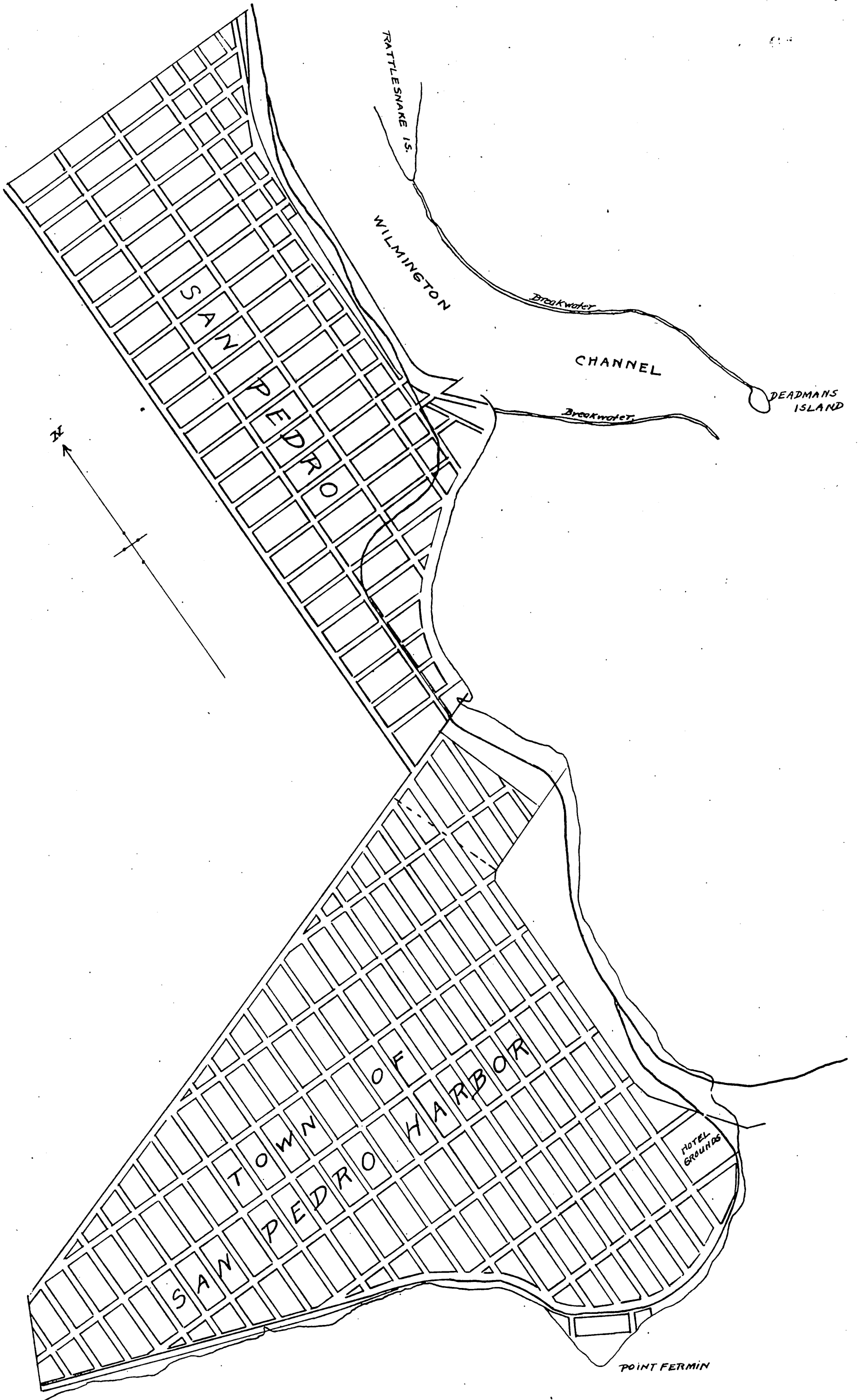
24	1
23	2
22	3
21	4
20	5
19	6
18	7
17	8
16	9
15	10
14	11
13	12

19	1
18	2
17	3
16	4
15	5
14	6
13	7
12	8
11	9
10	10

1
2
3
4
5
6
7
8
9
10
11
12
13
14
15
16
17



1	2	3	4	5	6	7	8	9	10	11	12	13	14	15	16	17	18	19
---	---	---	---	---	---	---	---	---	----	----	----	----	----	----	----	----	----	----



A full, true and correct copy of the original  
 recorded Sept 14, 1888 at 15 min past 100 m.  
 at request of Wells, Fargo & Co.  
 (Pages 55 to 60 inclusive reduced to 250 ft tall in)  
 Frank A. Gibson, County Recorder.  
 By George Bugbee Deputy.