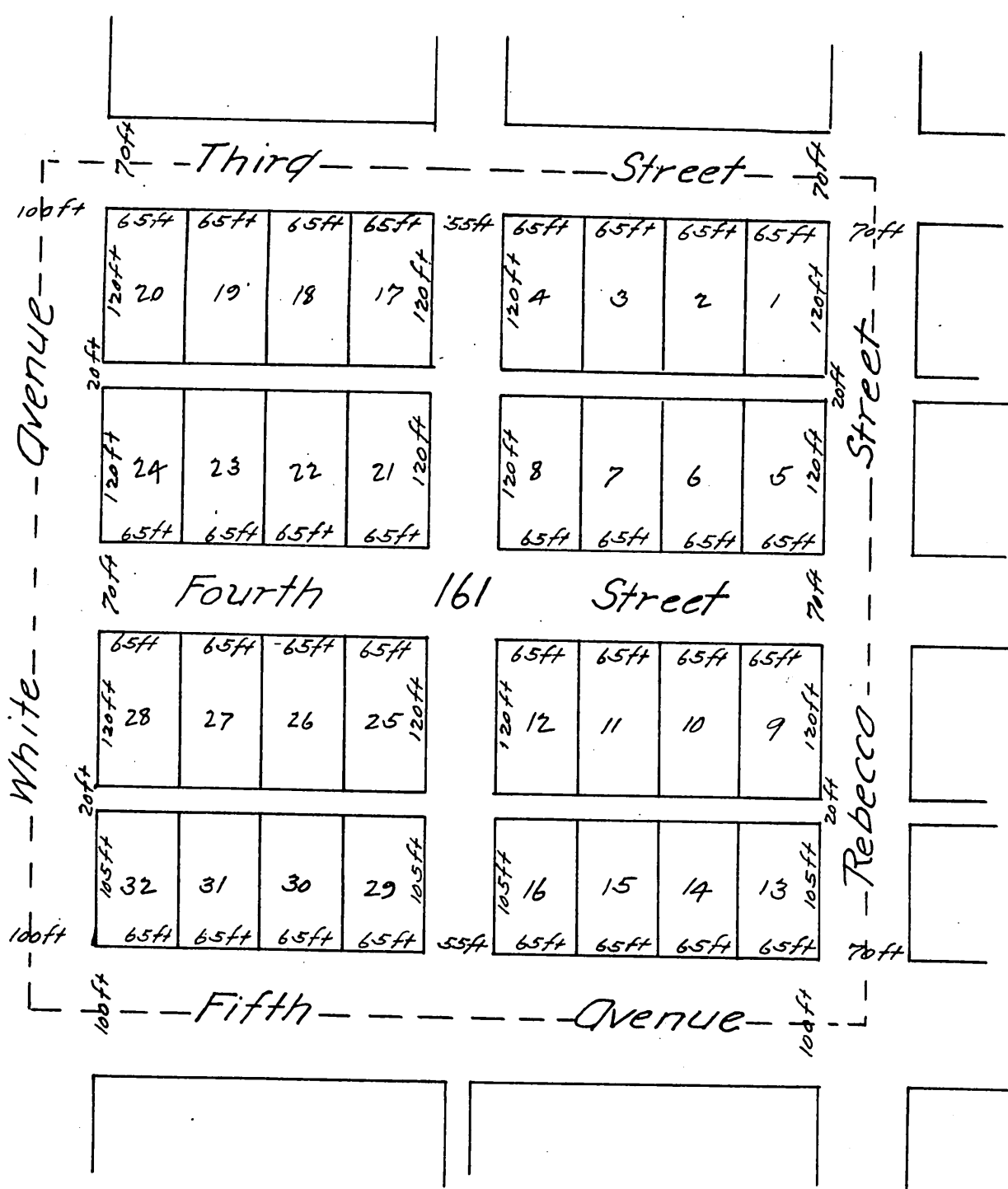




MAP OF S.J. Ralph's Subdivision of Block 161 Town of Pomona, California

Drawn Oct 1884 by Jas T Taylor Civil Engineer.
Scale 66 feet to 1 inch.

Recorded at request of S.J. Ralph, Oct. 20, 1884.
at 38 min past 2 P.M. in Book 6 Misc. Records
page 106. Records of Los Angeles County.
Chas E. Miles, County Recorder
By W. B. Prechard - Deputy.



A full, true and correct copy of the original,
(reduced to the scale of 120 feet to one inch)
recorded Sept 22, 1888 at 7 min, past 3 P. M.
at request of S.J. Ralph.

Frank A Gibson County Recorder.
By George Bugbee Deputy.