

Survey 17° 2700

PLAT

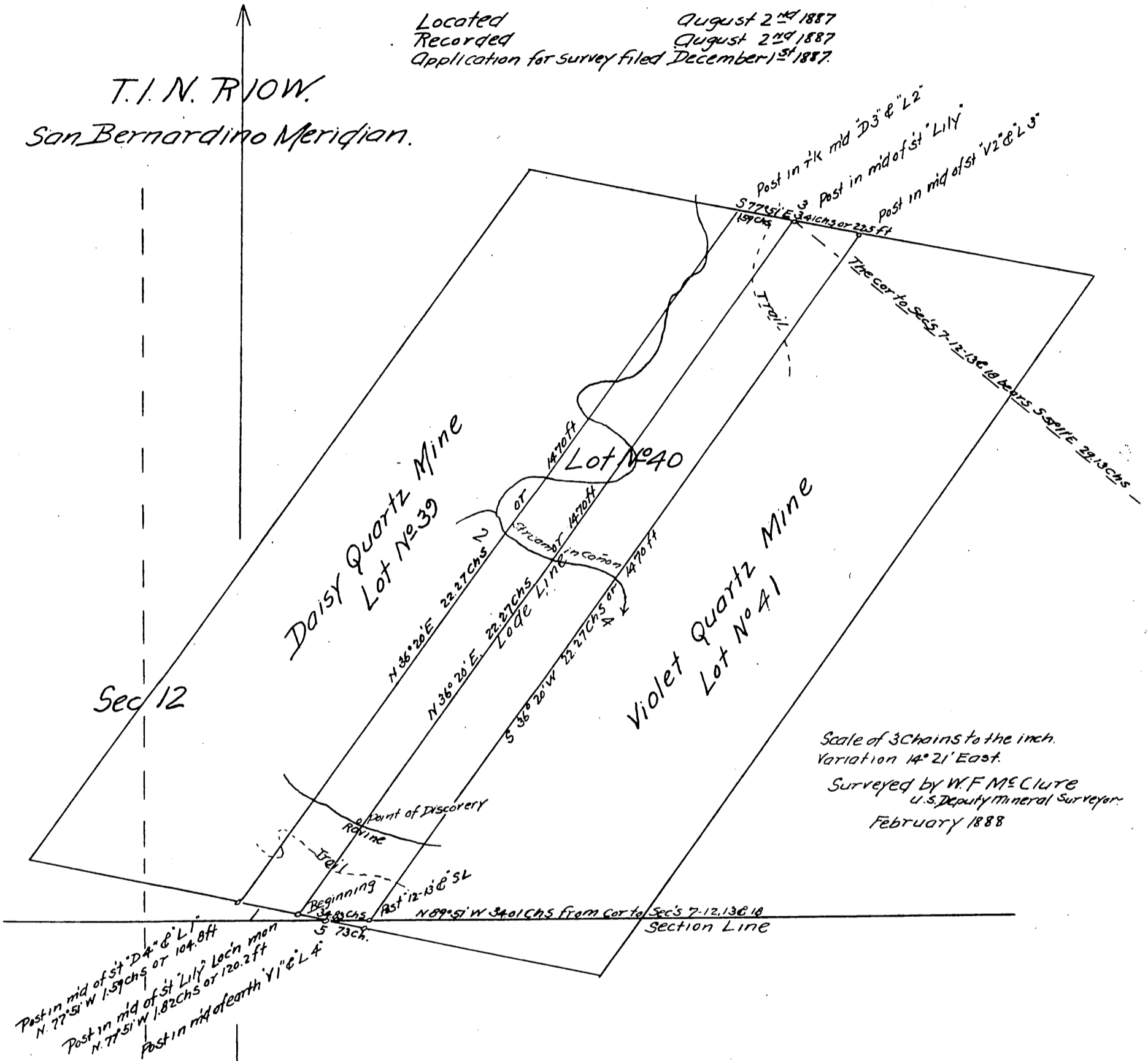
of the claim of Jacob Defty upon the Lily Quartz Mine

San Gabriel Mining District
Los Angeles County, California,

Containing an area of 6.92 acres

Located August 2nd 1887
Recorded August 2nd 1887
Application for survey filed December 1st 1887.

T. I. N. R. 10 W.
San Bernardino Meridian.



Scale of 3 Chains to the inch.
Variation 14° 21' East.

Surveyed by W. F. McClure
U. S. Deputy Mineral Surveyor
February 1888

Post in mid of st. D4 & L1
N. 77° 51' W 1.59 chs or 104.8 ft
Post in mid of st. Lily Loch man
N. 77° 51' W 1.82 chs or 120.2 ft
Post in mid of earth Y1 & L4

Sec 13

I hereby certify this to be a full true
and correct copy of the original plat
on file in this office

Witness my hand and official seal,
U. S. Surveyor General's office,
San Francisco, California,
Sept, 25th 1888

R. P. Hammond Jr.
U. S. Surveyor Cal.

The original field notes of the survey of the claim of Jacob Defty upon the Lily Quartz Mine from which this plat has been made have been examined and approved and are on file in this office, and I hereby certify that they furnish such an accurate description of said mining claim as will if incorporated into a patent, serve fully to identify the premises and that such reference is made therein to natural objects and permanent monuments as will perpetuate and fix the locus thereof. I further certify that the value of the labor and improvements placed thereon by the applicant or his grantors is not less than five hundred dollars and that said improvements consist of a tunnel 200 feet long and other improvements as appears by the report of the deputy Surveyor and the testimony of two disinterested witnesses, and, I further certify that this is a correct plat of said mining claim made in conformity with said original field notes of the survey thereof.

U. S. Surveyor General's office,
San Francisco, Cal,
June 6th 1888

R. P. Hammond, Jr.
U. S. Surveyor-General for California,

A full, true and correct copy of the original
recorded October 1, 1888 at 12 min past 4 P.M.
at request of A. B. T. I. Co

Frank G. Gibson County Recorder.
By George Bugbee Deputy.