



MAP

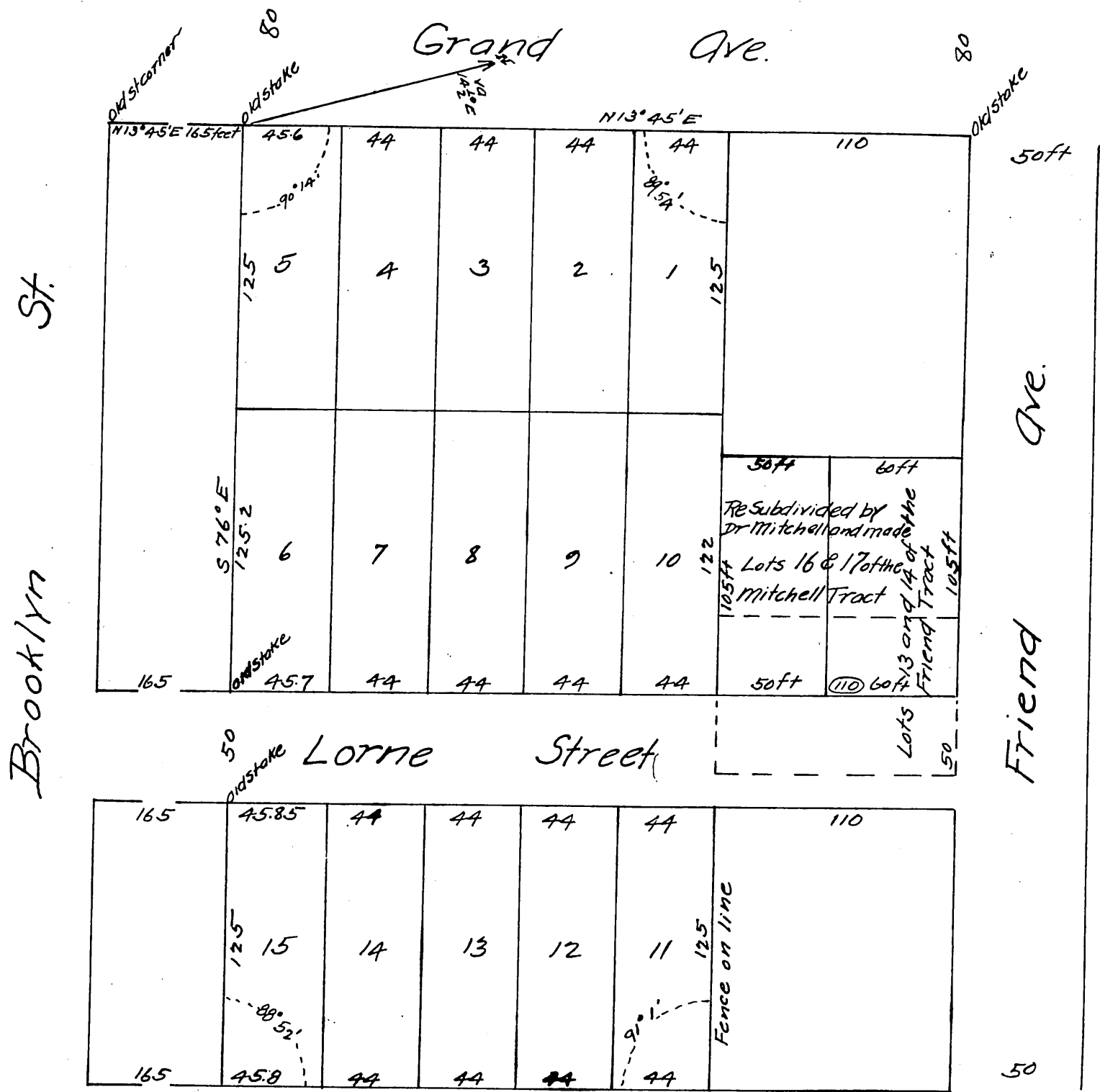
OF THE

Mitchell Tract

on Grand Ave and Lorne Sts between Friend Ave and Brooklyn St in the City and County of Los Angeles, Cal Being part of Lot 3 Block 2 Hancock Survey

Surveyed Dec 10th 1887 by John Goldsworthy
County Surveyor

Scale 30 ft = 1 inch.



A full, true and correct copy of the original
(reduced to the scale of 60 feet to one inch)
Recorded Oct 2, 1888 at 46 min past 3 P.M.
at request of A. Mitchell.

Frank A Gibson, County Recorder.
By George Bugbe Deputy