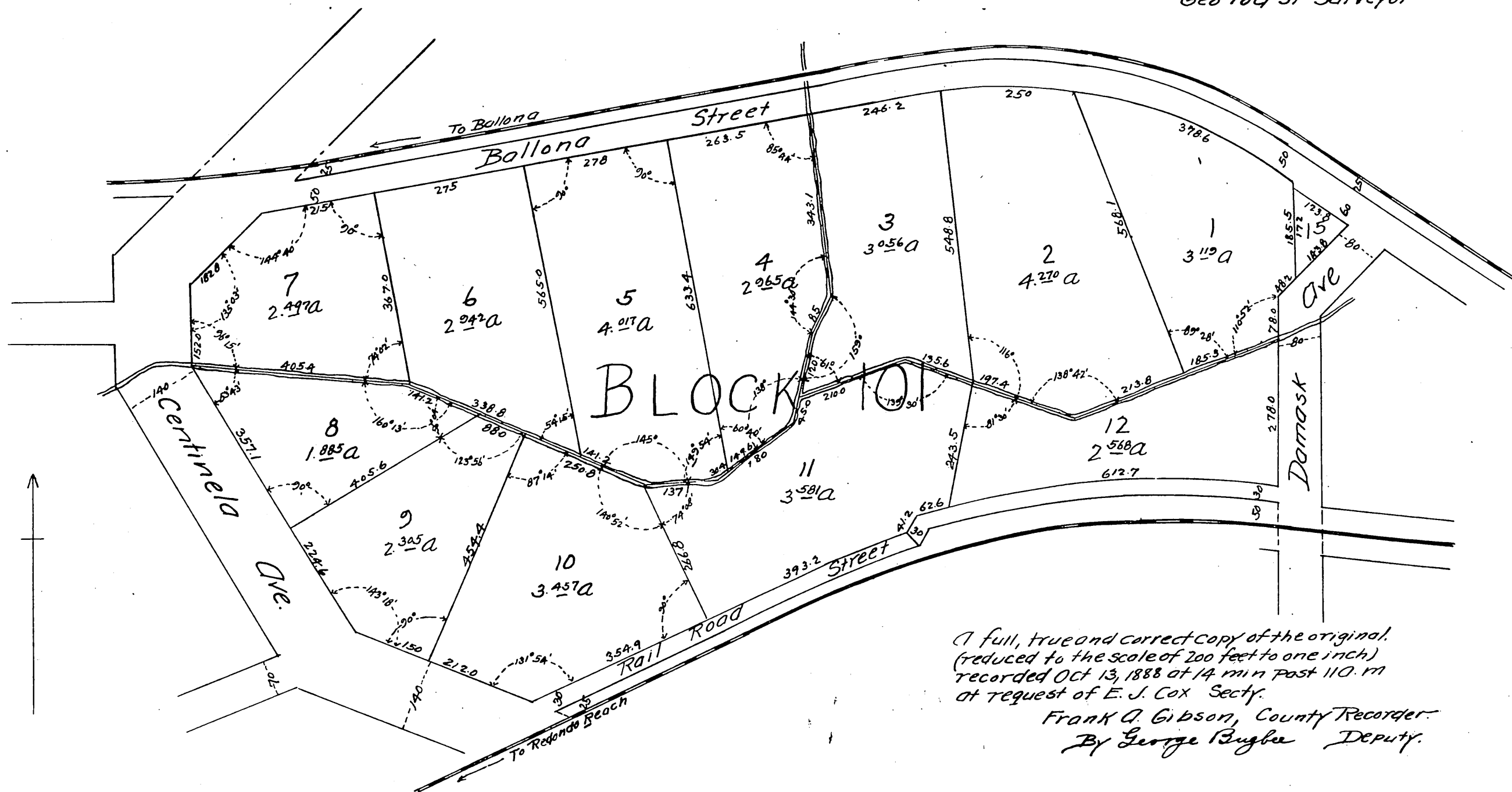


MAP of Block 101 in the Town of Inglewood

Showing subdivision of that part lying between
Damask Ave on the East and Centinela Ave
on the West, The Ballona R.R on the North
and the Redondo R.R on the South.
Being in Sec 29 T. 2. S. R. 14 W S. B. 17. 1 N.
Los Angeles Co Cal.

Scale 1 inch = 100 feet

Surveyed Oct 5th 1888
Geo Tod Jr Surveyor



A full, true and correct copy of the original.
(reduced to the scale of 200 feet to one inch)
recorded Oct 13, 1888 at 14 min past 11 O. M
at request of E. J. Cox Secty.

Frank A. Gibson, County Recorder.
By George Bugbe Deputy.