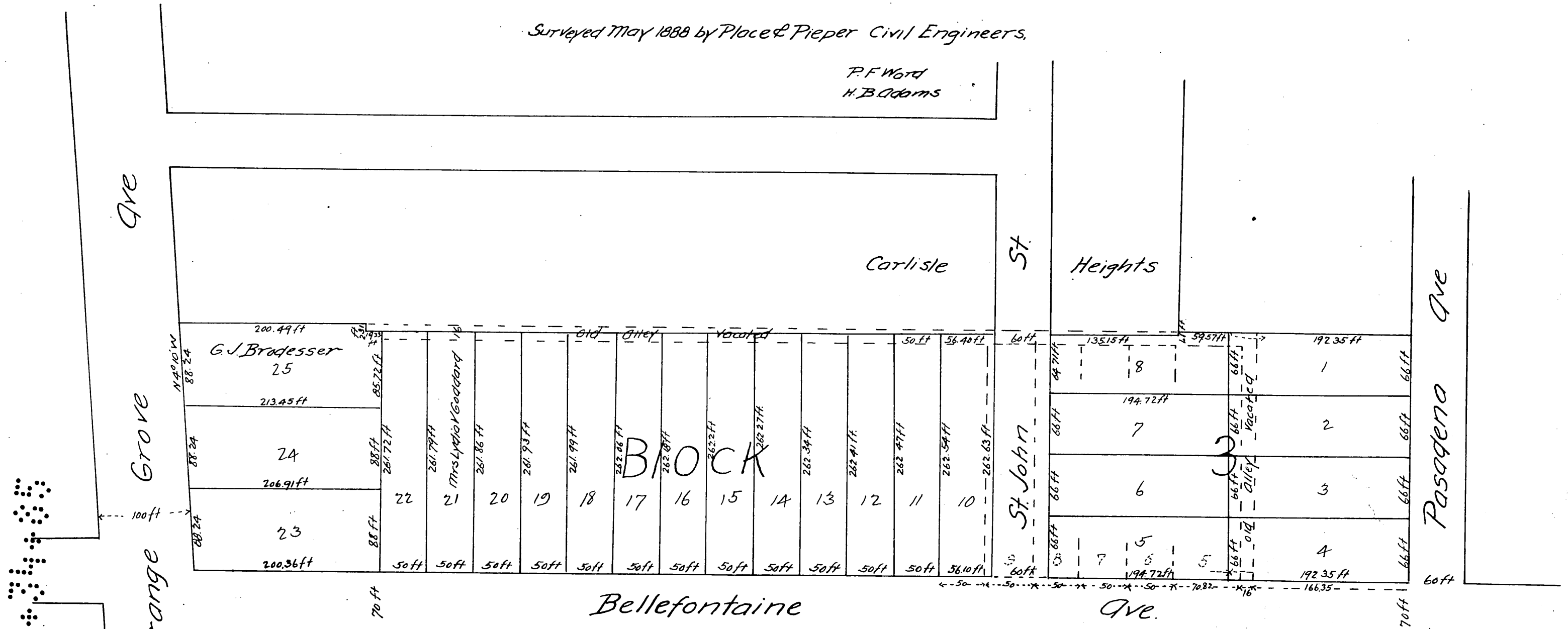


Re Subdivision of  
 Lots Nos 1 to 22 inclusive and Lot No. 25 Block 3  
 La Fuente Place

Surveyed May 1888 by Place & Pieper Civil Engineers.

P. F. Ward  
 H. B. Adams



A full, true and correct copy of the original  
 recorded Oct 17, 1888 at 12 min Past 8 A.M.  
 at request of Pindor F. Ward  
 Frank Q. Gibson, County Recorder.  
 By George Bugbee Deputy.