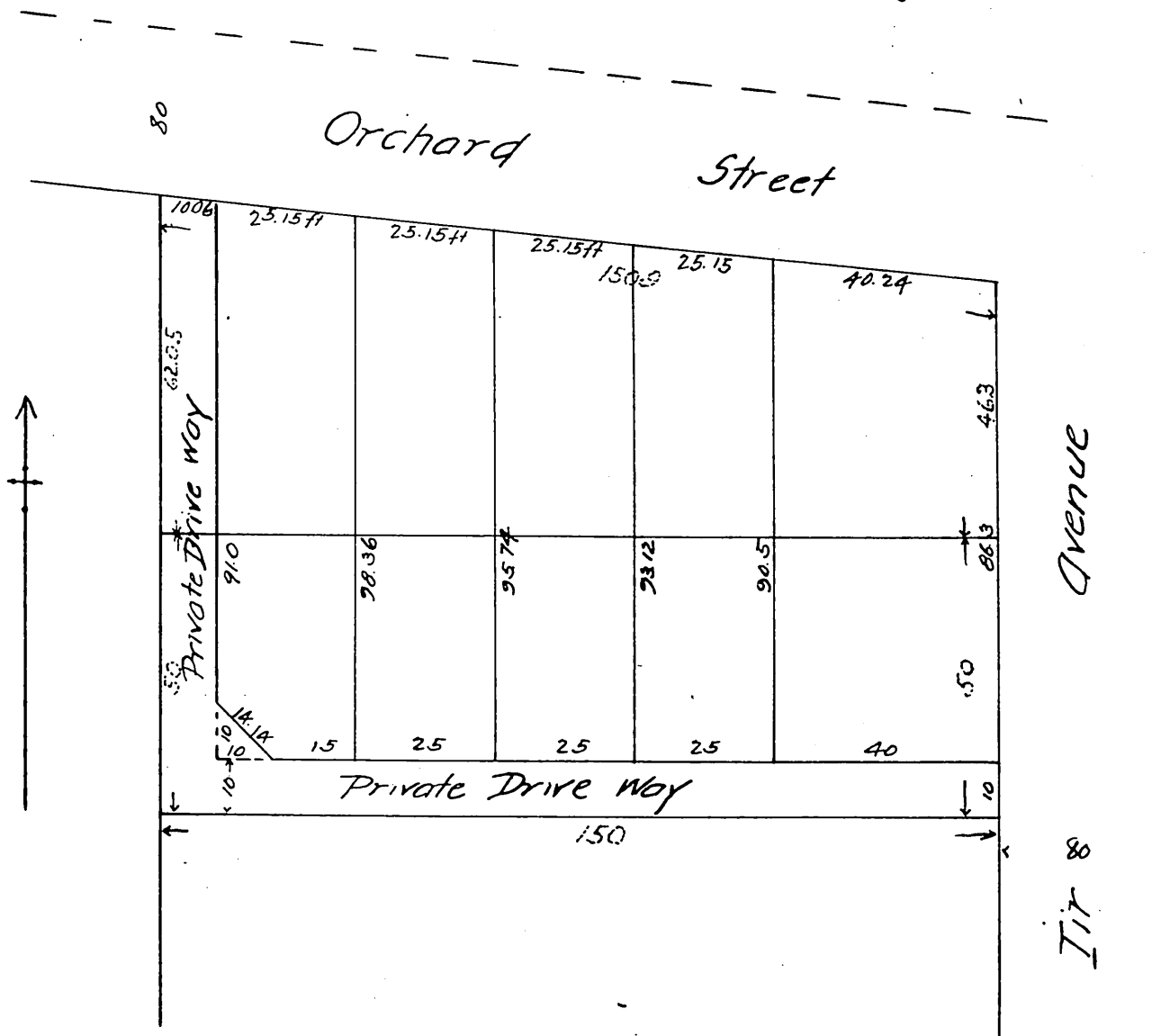


MAP
OF
Earl Parsons' Subdivision
of Lots Nos 1 & 2 of Block 205 in the
Town of Inglewood
Los Angeles Co Cal

Explanations.

The figures in red show the original Plan of Lots 1 & 2
in Block 205. The figures in black show the present
Subdivision. Scale one inch = 20 feet
Surveyed Sept 20th 1888 Geo Tod Jr Surveyor.

Broken Figures are in red on original.



A full, true and correct copy of the original
(reduced to the scale of 30 feet to one inch)
recorded Oct 17, 1888 at 30 min past 4 P.M.
at request of E Parsons.

Frank A Gibson, County Recorder.
By George Bugbee Deputy