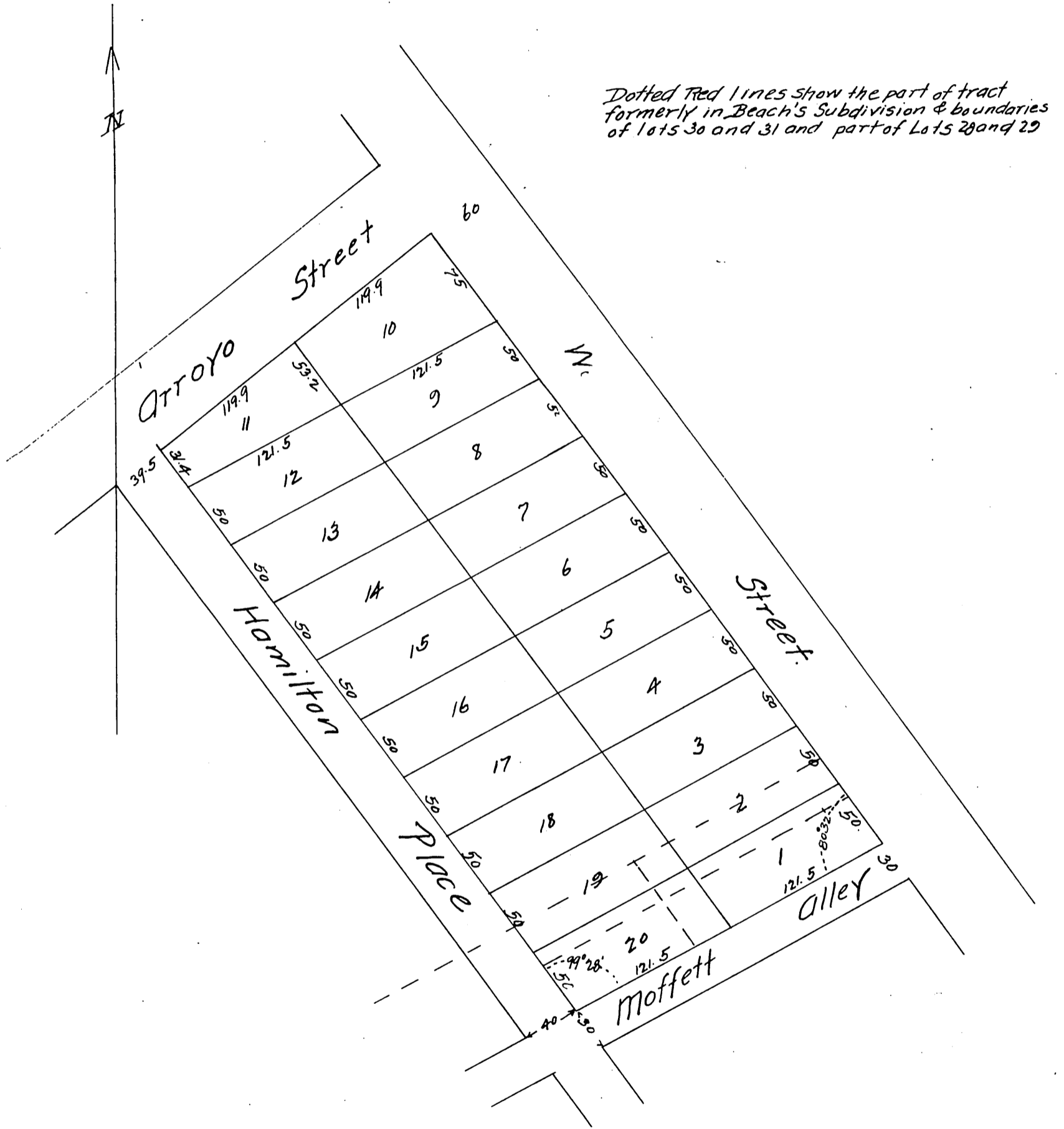


MAP

of Addition No. 3 to the
Hamilton Tract
East Los Angeles, Cal.

88

A. R. Street, Sur, Oct 1888
Scale 50 feet per inch.



A full, true and correct copy of the original
(reduced to the scale of 50 feet to one inch)
recorded Oct 22, 1888 at 24 min past 90. M
at request of E. M. Hamilton.

Frank A. Gibson, County Recorder.
By George Bugbee Deputy.