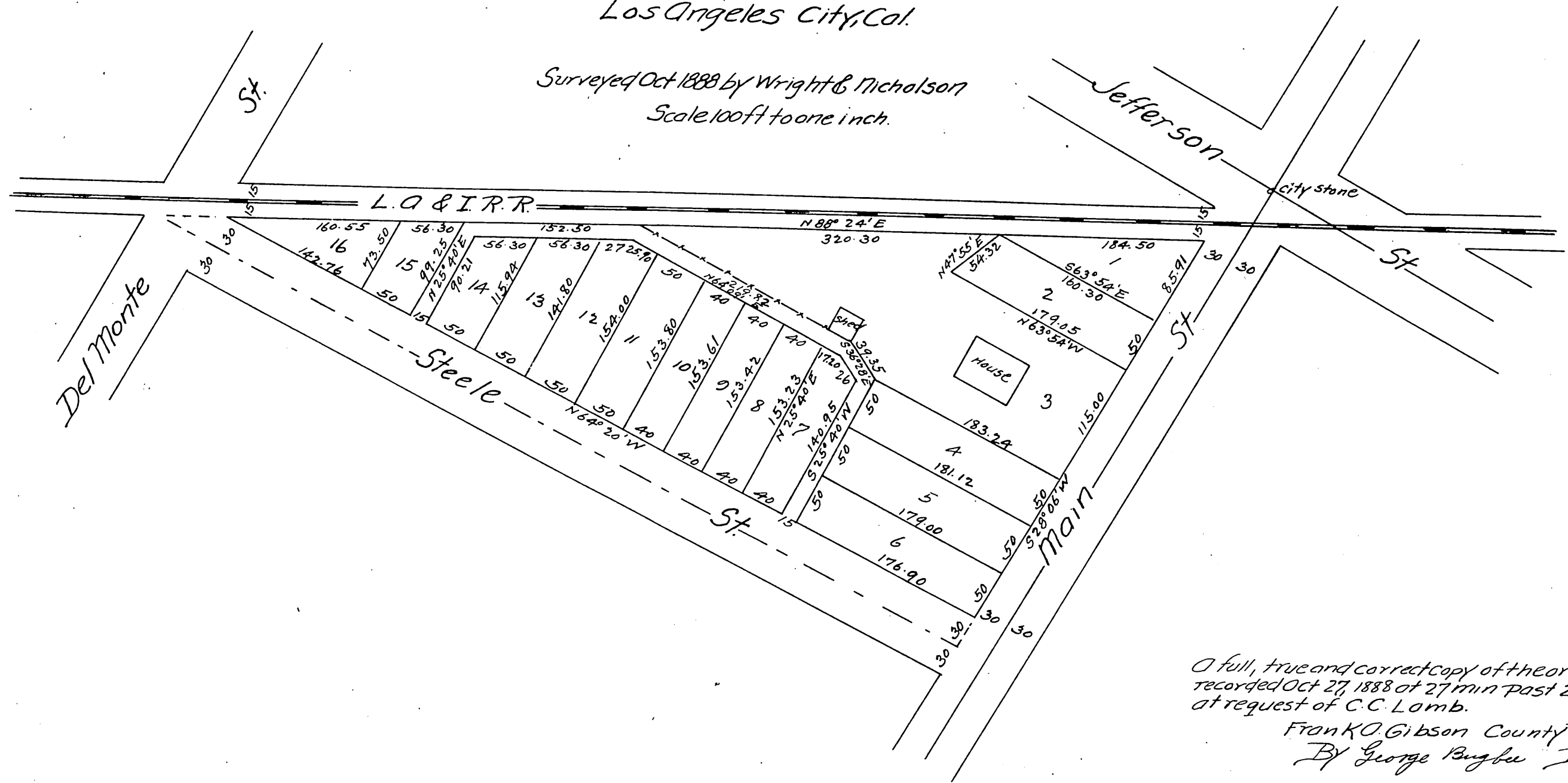


MAP OF Lamb's Home Tract Los Angeles City, Cal.

Surveyed Oct 1888 by Wright & Nicholson
Scale 100ft to one inch.



A full, true and correct copy of the original
recorded Oct 27, 1888 at 27 min Past 2 P.M.
at request of C.C. Lamb.

Frank O. Gibson County Recorder
By George Bugbe Deputy.

